

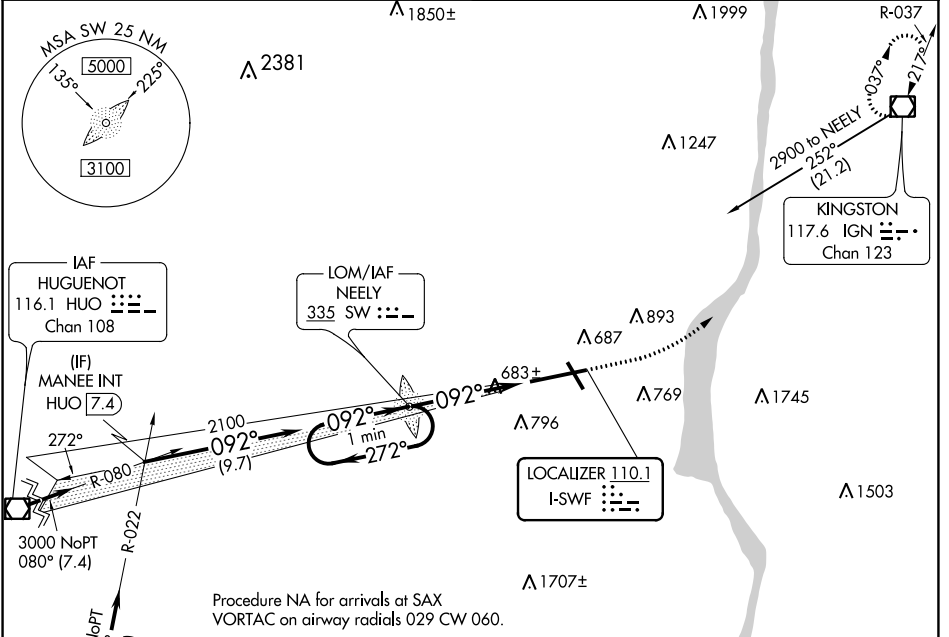
LOC I-SWF <b>110.1</b>	APP CRS <b>092°</b>	Rwy Idg <b>8817</b>
		TDZE <b>482</b>
		Apt Elev <b>491</b>

# ILS RWY 9 (CAT II & III)

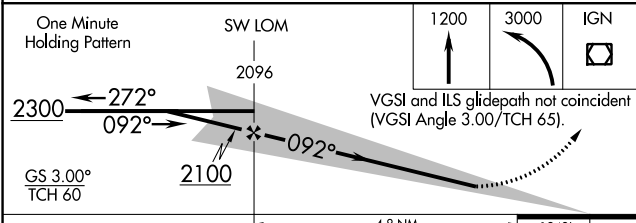
## NEW YORK STEWART INTL (SWF)

<p><b>⚠</b> CAT II: RVR 1000 authorized with specific OPSPEC, MSPEC, or LOA and use of autoland or HUD to touchdown.</p>	<p>ALS-F-2  </p>	<p>MISSED APPROACH: Climb to 1200 then climbing left turn to 3000 direct IGN VOR/DME and hold.</p>
--	----------------------	--

<p>ATIS <b>124.575</b></p>	<p>NEW YORK APP CON <b>132.75 363.1</b></p>	<p>STEWART TOWER <b>121.0 254.4</b></p>	<p>GND CON <b>121.9</b></p>
--------------------------------	---	---	---------------------------------



ELEV 491	<b>D</b>	TDZE 482
----------	----------	----------



CATEGORY	A	B	C	D
S-ILS 9		CAT II RA 97/12	100	DA 582
S-ILS 9		CAT IIIa RVR 07		
S-ILS 9		CAT IIIb RVR 06		
S-ILS 9		CAT IIIc NA		

**CATEGORY II & III ILS SPECIAL AIRCREW & AIRCRAFT CERTIFICATION REQUIRED**

TWR 593

HIRL Rwy 9-27 and 16-34

REIL Rwy 16, 27 and 34

NE-2, 13 JUN 2024 to 11 JUL 2024

NE-2, 13 JUN 2024 to 11 JUL 2024