

WICHITA FALLS, TEXAS

ILS or LOC/DME RWY 15C

LOC I-SHP 110.5	APCH CRS 153°	Rwy Ldg 15C 10,003 15R 13,101 TDZE 15C 1003 15R 998 Arprt Elev 1019
---------------------------	-------------------------	--

AL-454 [USAF]

SHEPPARD AFB/
WICHITA FALLS MUNI (KSPS)

DME required.

▼ * When ALS inop, increase all CATs vis to 3/4 mile.
** When ALS inop, increase CAT AB vis to 1 mile,
CAT CDE vis to 1 1/2 miles.



MISSED APPROACH: Climb and maintain 3100, intercept SHP TACAN R-155 to SHP R-155/9 DME (JIVIT) and hold.

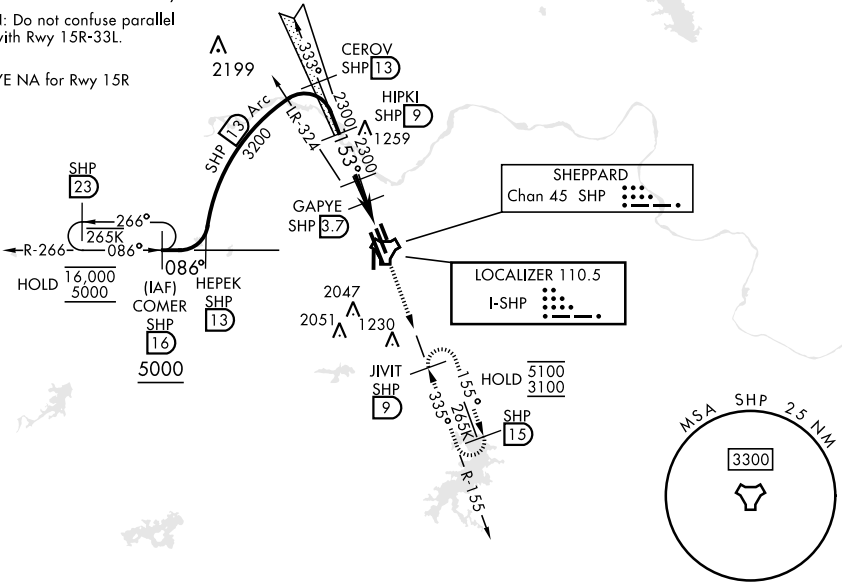
ATIS ★ 132.05 269.9	APP CON 118.2 269.025	TOWER ★ 119.75 279.525 (CTAF)	GND CON 125.5 289.4	CLNC DEL 121.2 282.225	ASR
-------------------------------	---------------------------------	---	-------------------------------	----------------------------------	-----

*** When ALS inop, increase CAT AB vis to 1 mile,
CAT CDE vis to 1 1/2 miles.

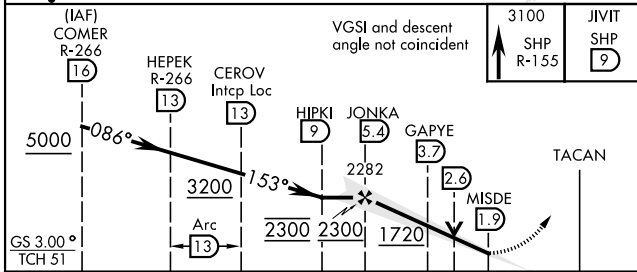
† Circling not authorized W of Rwy 15R-33L.

CAUTION: Do not confuse parallel taxiway with Rwy 15R-33L.

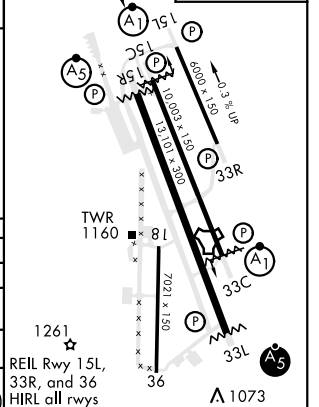
SDF GAPYE NA for Rwy 15R



1407 EMERG SAFE ALT 100 NM 4600



ELEV 1019	TDZE 15C 1003
153°	TDZE 15R 998



CATEGORY	A	B	C	D	E
S-ILS 15C *	1203-1/2		200	(200-1/2)	
S-LOC/ DME 15C **	1420-1/2	417 (500-1/2)	1420-3/4	417	(500-3/4)
SIDESTEP 15R ***	1420-1/2	422 (500-1/2)	1420-3/4	422	(500-3/4)
⊕ CIRCLING†	1440-1 421 (500-1)	1480-1 461 (500-1)	1480-1 1/2 461 (500-1 1/2)	2020-3 1001 (1100-3)	2080-3 1061 (1100-3)

WICHITA FALLS, TEXAS 33°59'N-98°30'W

SHEPPARD AFB/WICHITA FALLS MUNI (KSPS)

Amtd 9 08SEP22

ILS or LOC/DME RWY 15C

SC-2, 13 JUN 2024 to 11 JUL 2024

SC-2, 13 JUN 2024 to 11 JUL 2024