

RNAV (GPS) RWY 33C

APCH CRS 333°	Rwy Idg 10.003
	TDZE 989
	Arprt Elev 1019

[USAF]

SHEPPARD AFB/WICHITA FALLS MUNI (KSPS)

RNP APCH-GPS

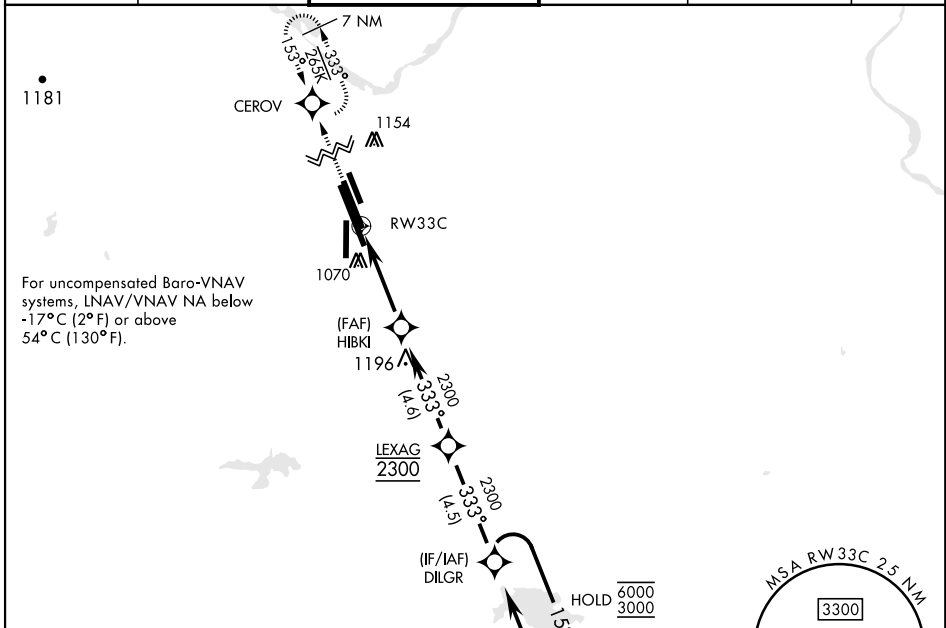
ALSF-1

MISSED APPROACH: Climb to 3300 direct CEROV and hold.

▼ * When ALS inop, increase vis to 1 mile.
** Circling NA southwest of Rwy 15R-33L.



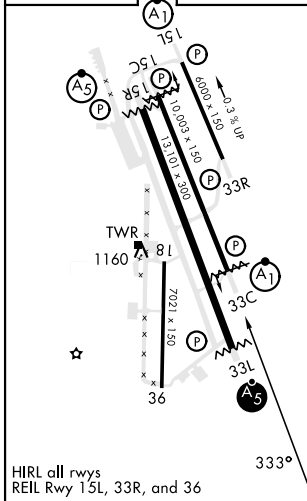
ATIS ★ 132.05 269.9	APP CON 118.2 269.025	TOWER ★ 119.75 0 279.525 (CTAF)	GND CON 125.5 289.4	CLNC DEL 121.2 282.225	ASR
-------------------------------	---------------------------------	---	-------------------------------	----------------------------------	-----



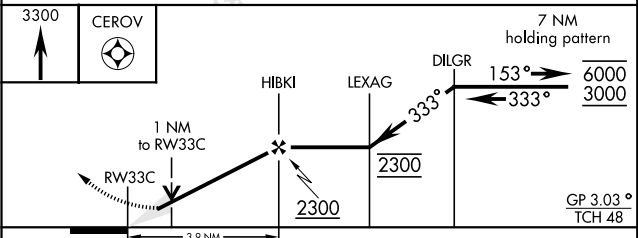
For uncompensated Baro-VNAV systems, LNAV/VNAV NA below -17°C (2°F) or above 54°C (130°F).

EMERG SAFE ALT 100 NM 4600

ELEV	1019	TDZE	989
------	------	------	-----



HIRL all rwys
REIL Rwy 15L, 33R, and 36



CATEGORY	A	B	C	D	E
LNAV/VNAV DA *	1322-½		333	(400-½)	
LNAV MDA *	1340-½	351 (400-½)	1340-5/8	351	(400-5/8)
** CIRCLING	1440-1 421 (500-1)	1480-1 461 (500-1)	1480-1½ 461 (500-1½)	2020-3 1001 (1100-3)	2080-3 1061 (1100-3)

RNAV (GPS) RWY 33C

SC-2, 13 JUN 2024 to 11 JUL 2024

SC-2, 13 JUN 2024 to 11 JUL 2024