

LOC I-GMX 111.55	APP CRS 238°	Rwy Idg 8016 TDZE 26 Apt Elev 32
----------------------------	------------------------	---

ILS Y or LOC RWY 24

WILMINGTON INTL (ILM)

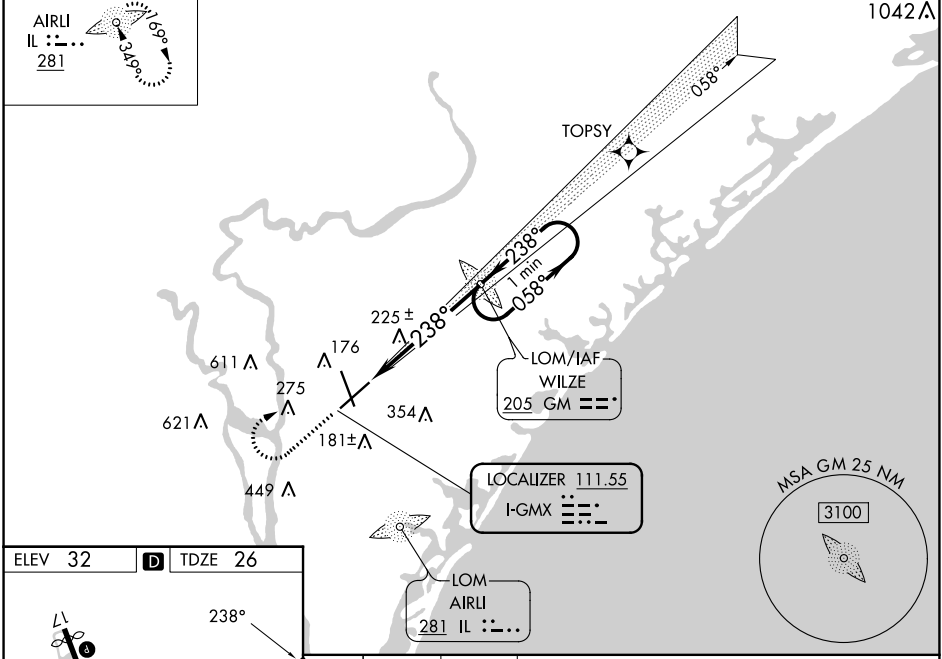
<p>**RVR 1800 authorized with use of FD or AP or HUD to DA. ADF required.</p>	<p>MALSR</p>	<p>MISSED APPROACH: Climb to 500 then climbing right turn to 1800 direct WILZE LOM and hold.</p>
--	--------------	--

<p>ATIS 124.975</p>	<p>WILMINGTON APP CON ★ 118.25 284.65 (164°-343°) 135.75 317.425 (344°-163°)</p>	<p>WILMINGTON TOWER ★ 119.9(CTAF) 239.3</p>	<p>GND CON 121.9 348.6</p>	<p>UNICOM 122.95</p>
--------------------------------	--	---	---------------------------------------	---------------------------------

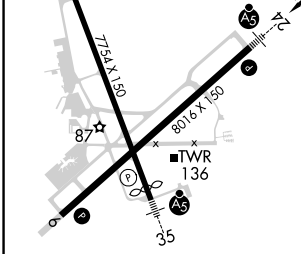
ALTERNATE MISSED APCH FIX

AIRLI
IL :::::
281

RNAV 1-GPS or RADAR REQUIRED



ELEV 32	D	TDZE 26
---------	---	---------



500	1800	GM	WILZE LOM	One Minute Holding Pattern
<p>VGSI and ILS glidepath not coincident (VGSI Angle 3.00/TCH 48).</p>			1798	1800
			058°	1800
			238°	1800
<p>5.3 NM</p>			GS 3.00°	TCH 52

	CATEGORY	A	B	C	D
S-ILS 24**		226/24		200 (200-½)	
S-LOC 24		500/24	474 (500-½)	500/50	474 (500-1)
CIRCLING		560-1	528 (600-1)	720-2 688 (700-2)	920-3 888 (900-3)

WILMINGTON, NORTH CAROLINA
Amdt 2 17AUG17

34°16'N-77°54'W

WILMINGTON INTL (ILM) ILS Y or LOC RWY 24

SE-2, 13 JUN 2024 to 11 JUL 2024

SE-2, 13 JUN 2024 to 11 JUL 2024