

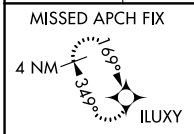
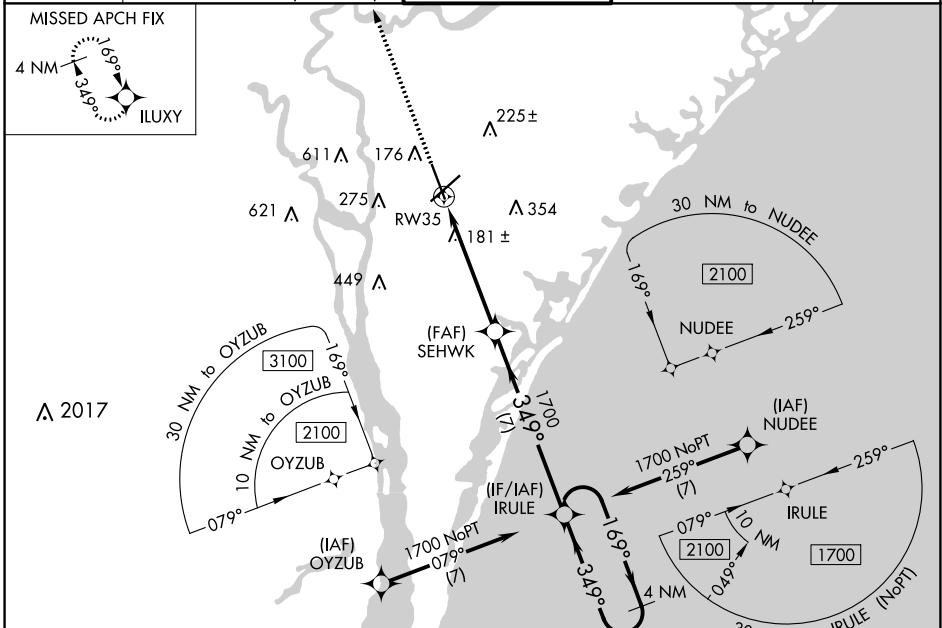
WAAS CH 50499 W35A	APP CRS 349°	Rwy Idg 7204 TDZE 31 Apt Elev 32
--	------------------------	---

RNAV (GPS) RWY 35

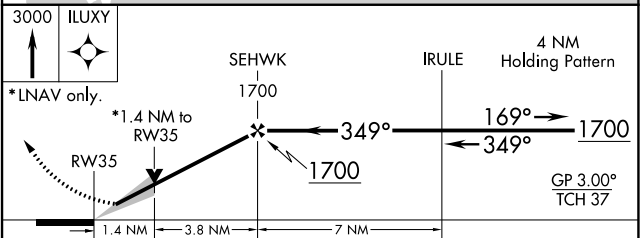
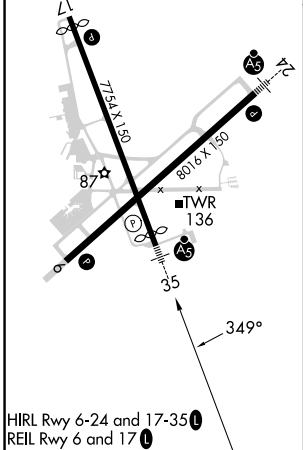
WILMINGTON INTL (ILM)

	For uncompensated Baro-VNAV systems, LNAV/VNAV NA below -7°C (20°F) or above 54°C (130°F). DME/DME RNP-0.3 NA. For inop ALS, increase LNAV Cats C/D visibility to 1 3/8 SM.	MALSR 	MISSED APPROACH: Climb to 3000 direct ILUXY and hold.
--	---	-----------	---

ATIS 124.975	WILMINGTON APP CON ★ 118.25 284.65 (164°-343°) 135.75 317.425 (344°-163°)	WILMINGTON TOWER ★ 119.9 (CTAF) 239.3	GND CON 121.9 348.6	UNICOM 122.95
------------------------	---	--	-------------------------------	-------------------------



ELEV 32	D	TDZE 31
---------	---	---------



CATEGORY	A	B	C	D
LPV DA	242/24		211 (300-1/2)	
LNAV/VNAV DA	426/45		395 (400-7/8)	
LNAV MDA	500/24 469 (500-1/2)		500/50	469 (500-1)
<input checked="" type="checkbox"/> CIRCLING	560-1	528 (600-1)	720-2 688 (700-2)	920-3 888 (900-3)

SE-2, 13 JUN 2024 to 11 JUL 2024

SE-2, 13 JUN 2024 to 11 JUL 2024