


RNAV (RNP) Y RWY 27

YAKIMA AIR TRML/MCALLISTER FLD (YKM)

APP CRS	Rwy Idg	7604
274°	TDZE	1068
	Apt Elev	1099

RNP APCH - GPS. From MUdle or OVTEE or YIGUN: RF.

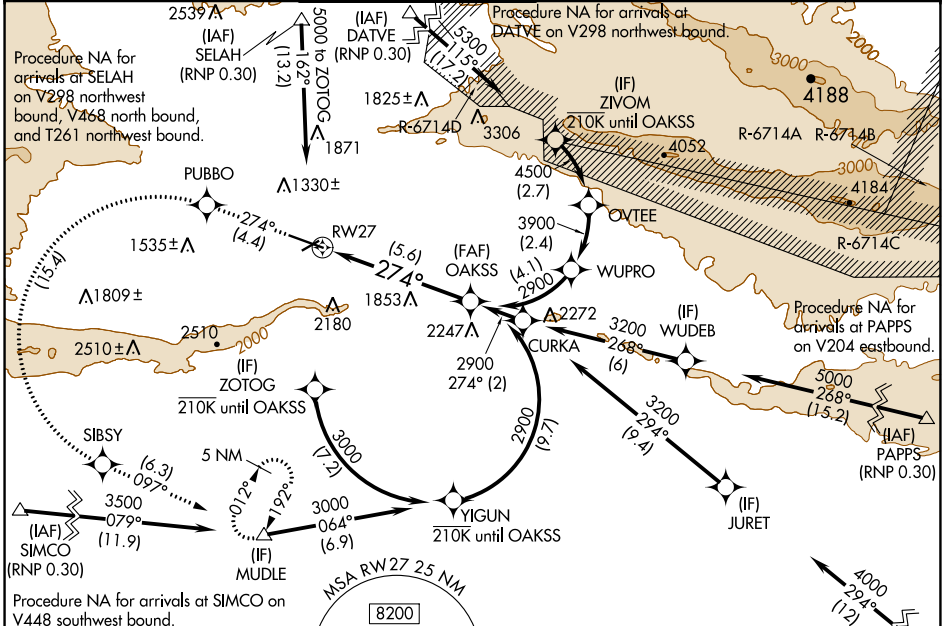
▼ For uncompensated Baro-VNAV systems, procedure NA below -15°C or above 54°C. DATVE transition NA when R-6714 A, C, D active. For inop ALS, increase RNP 0.30* all Cats visibility to RVR 5500 and RNP 0.30 all Cats to 2½ SM.

MALSRS 

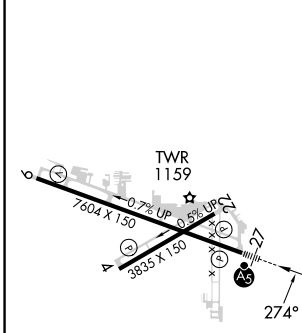
MISSED APPROACH: Climb to 5100 on track 274° to PUBBO left turn to SIBSY and on track 097° to MUdle and hold.



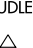
*Missed approach requires minimum climb of 425 feet per NM to 3400.

ATIS	SPOKANE APP CON*	YAKIMA TOWER*	GND CON	CLNC DEL	UNICOM
125.25	123.8 263.15	133.25 (CTAF) 0 257.8	121.9	121.9	122.95



ELEV 1099	D	TDZE 1068
-----------	----------	-----------



5100	PUBBO	SIBSY	MUdle	OAKSS
tr 274°			tr 097°	
See planview for multiple IF locations.				
RW27				274°
				2900
				GP 3.00°
				TCH 57
5.6 NM				

CATEGORY	A	B	C	D
RNP 0.30 DA*		1418/30	350 (400-5%)	
RNP 0.30 DA		1845-1¾	777 (800-1¾)	

AUTHORIZATION REQUIRED

NW-1, 13 JUN 2024 to 11 JUL 2024

NW-1, 13 JUN 2024 to 11 JUL 2024