

VORTAC YKM 116.0 Chan 107	APP CRS 251°	Rwy Idg TDZE Apt Elev N/A N/A 1099
---	------------------------	--

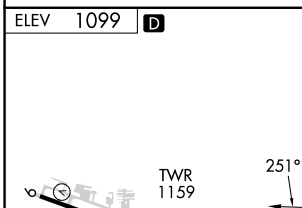
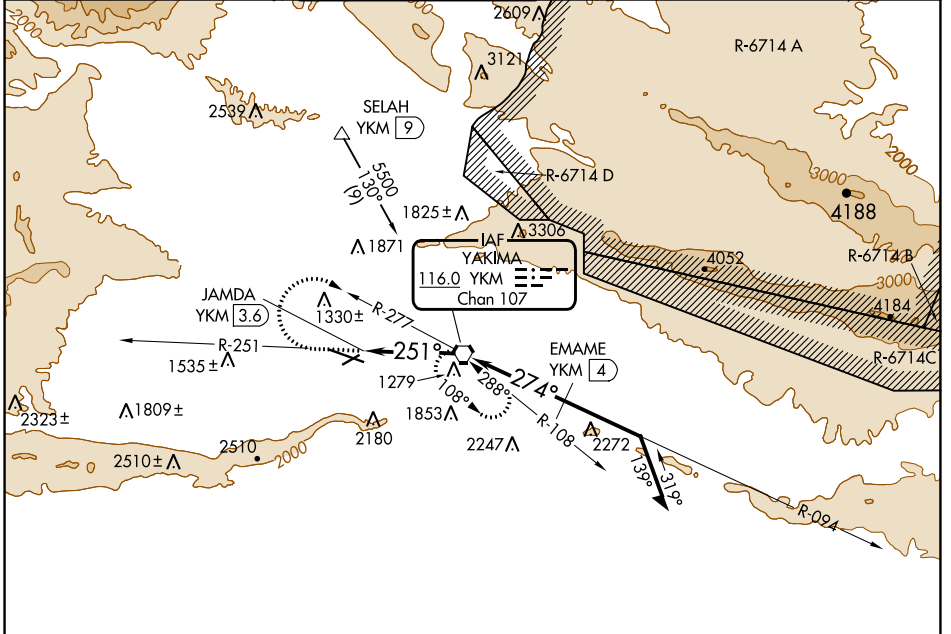
VOR-A

YAKIMA AIR TRML/MCALLISTER FLD (YKM)

⚠ DME required.
⚠ Circling not authorized south of Rwy 9-27.
 When local altimeter setting not received, procedure NA.

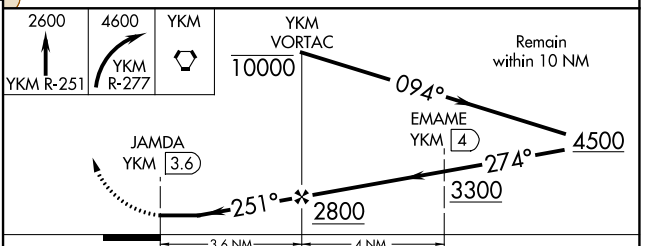
MISSED APPROACH: Climb to 2600 via YKM VORTAC R-251 then climbing right turn to 4600 via YKM VORTAC R-277 to YKM VORTAC and hold, continue climb-in-hold to 4600.

ATIS 125.25	SPOKANE APP CON* 123.8 263.15	YAKIMA TOWER* 133.25 (CTAF) 257.8	GND CON 121.9	CLNC DEL 121.9	UNICOM 122.95
-----------------------	---	---	-------------------------	--------------------------	-------------------------



MIRL Rwy 4-22
 HIRL Rwy 9-27
 REIL Rwys 4, 9, and 22

FAF to MAP 3.6 NM



	FAF to MAP 3.6 NM	CATEGORY	A	B	C	D
Knots	60 90 120 150 180		1840-1	1840-1¼	1940-2½	2280-3
Min:Sec	3:36 2:24 1:48 1:26 1:12	C CIRCLING	741 (800-1)	741 (800-1¼)	841 (900-2½)	1181 (1200-3)

NW-1, 13 JUN 2024 to 11 JUL 2024

NW-1, 13 JUN 2024 to 11 JUL 2024