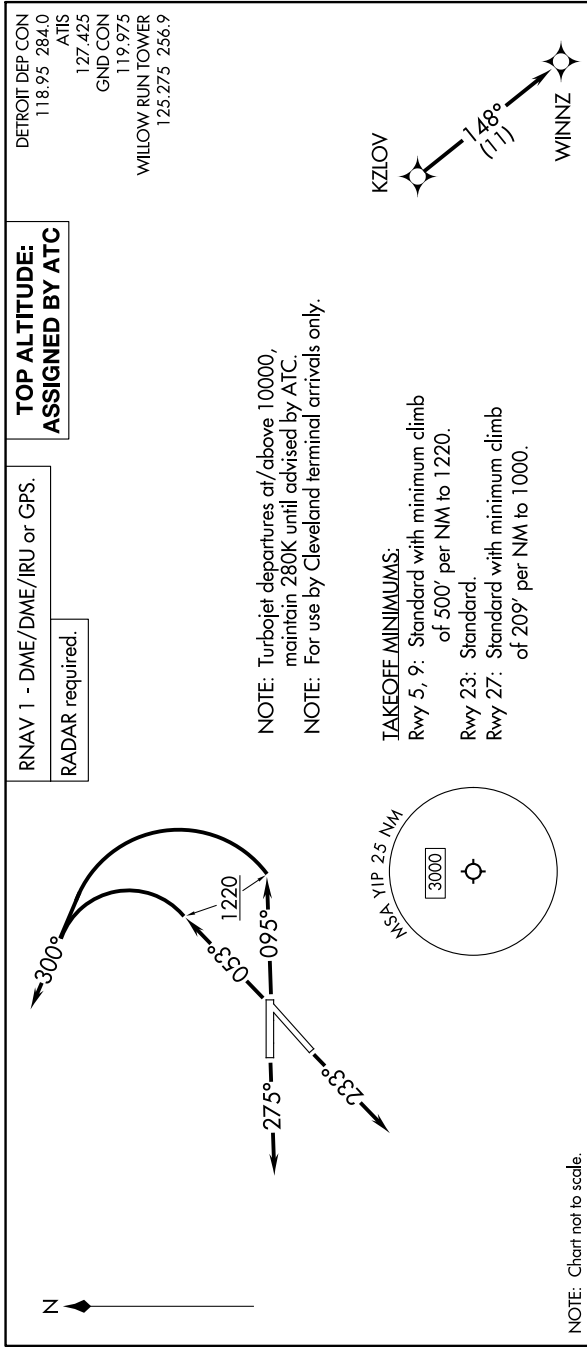


EC-1, 13 JUN 2024 to 11 JUL 2024



NOTE: Chart not to scale.

**TOP ALTITUDE:
ASSIGNED BY ATC**

RNAV 1 - DME/DME/IRU or GPS.
RADAR required.

DETROIT DEP CON
118.95 284.0
ATIS
127.425
GND CON
119.975
WILLOW RUN TOWER
125.275 256.9

NOTE: Turbojet departures at/above 10000, maintain 280K until advised by ATC.
NOTE: For use by Cleveland terminal arrivals only.

TAKEOFF MINIMUMS:
Rwy 5, 9: Standard with minimum climb of 500' per NM to 1220.
Rwy 23: Standard.
Rwy 27: Standard with minimum climb of 209' per NM to 1000.

DEPARTURE ROUTE DESCRIPTION

TAKEOFF RUNWAY 5: Climb on heading 053° to 1220, then on heading 300° or as assigned by ATC, for RADAR vectors to KZLOV, thence...
TAKEOFF RUNWAY 9: Climb on heading 095° to 1220, then on heading 300° or as assigned by ATC, for RADAR vectors to KZLOV, thence...
TAKEOFF RUNWAY 23: Climb on heading 233° or as assigned by ATC, for RADAR vectors to KZLOV, thence...
TAKEOFF RUNWAY 27: limb on heading 275° or as assigned by ATC, for RADAR vectors to KZLOV, thence...
...on track 148° to WINNZ. Maintain ATC assigned altitude, expect filed altitude ten minutes after departure.

EC-1, 13 JUN 2024 to 11 JUL 2024