

APP CRS	Rwy Idg	<b>5001</b>
<b>136°</b>	TDZE	<b>31</b>
	Apt Elev	<b>39</b>

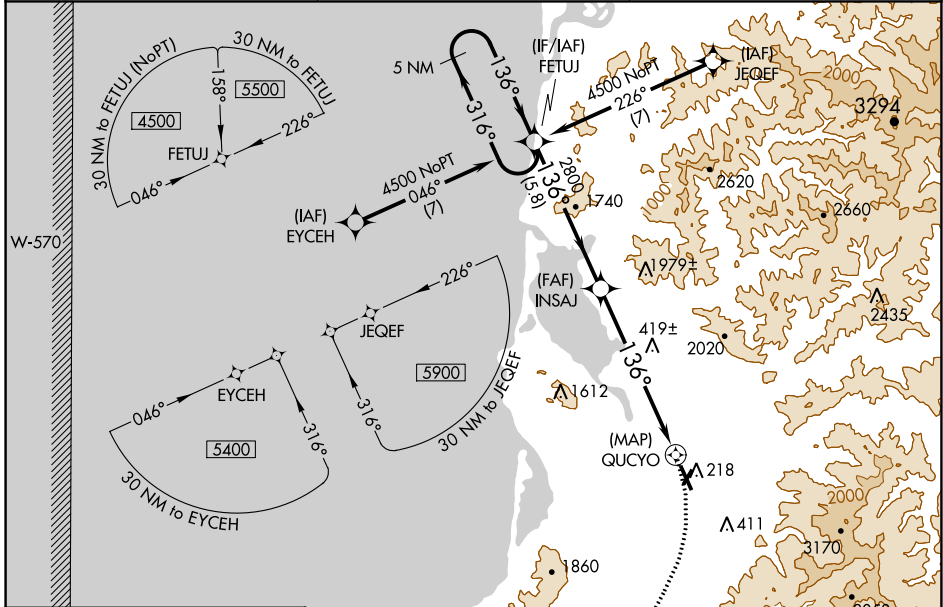
# RNAV (GPS) RWY 13

TILLAMOOK (TMK)

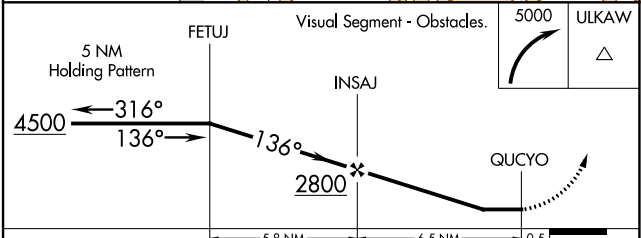
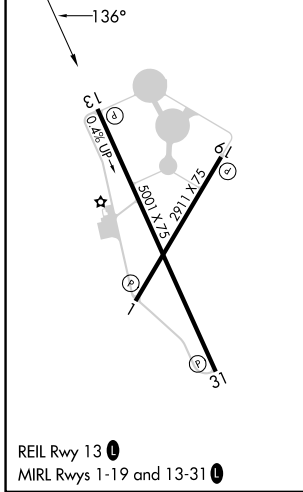
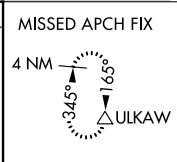
**NA** DME/DME RNP-0.3 NA. When local altimeter setting not received, use Astoria Rgnl altimeter setting and increase all MDA 540 feet; increase LNAV Cat A visibility ¼ SM, Cat B visibility ½ SM, and Cat C visibility 1 SM and Circling Cat B visibility ¼ SM  
 Night Landing: Rwy 1, 19 NA. Helicopter visibility reduction below ¼ SM NA.

**MISSED APPROACH:** Climbing right turn to 5000 direct ULKAW and hold, continue climb-in-hold to 5000.

AWOS-3PT <b>120.0</b>	SEATTLE CENTER <b>124.2 317.6</b>	UNICOM <b>122.8 (CTAF) 0</b>
--------------------------	--------------------------------------	---------------------------------



ELEV 39	TDZE 31
---------	---------



CATEGORY	A	B	C	D
LNAV MDA	760-1	729 (800-1)	760-2 729 (800-2)	NA
CIRCLING	880-1¼ 841 (900-1¼)	920-1¼ 881 (900-1¼)	1580-3 1541 (1600-3)	NA

NW-1, 13 JUN 2024 to 11 JUL 2024

NW-1, 13 JUN 2024 to 11 JUL 2024