

ALTUS, OKLAHOMA

ILS or RNAV (GPS) Y RWY 36L

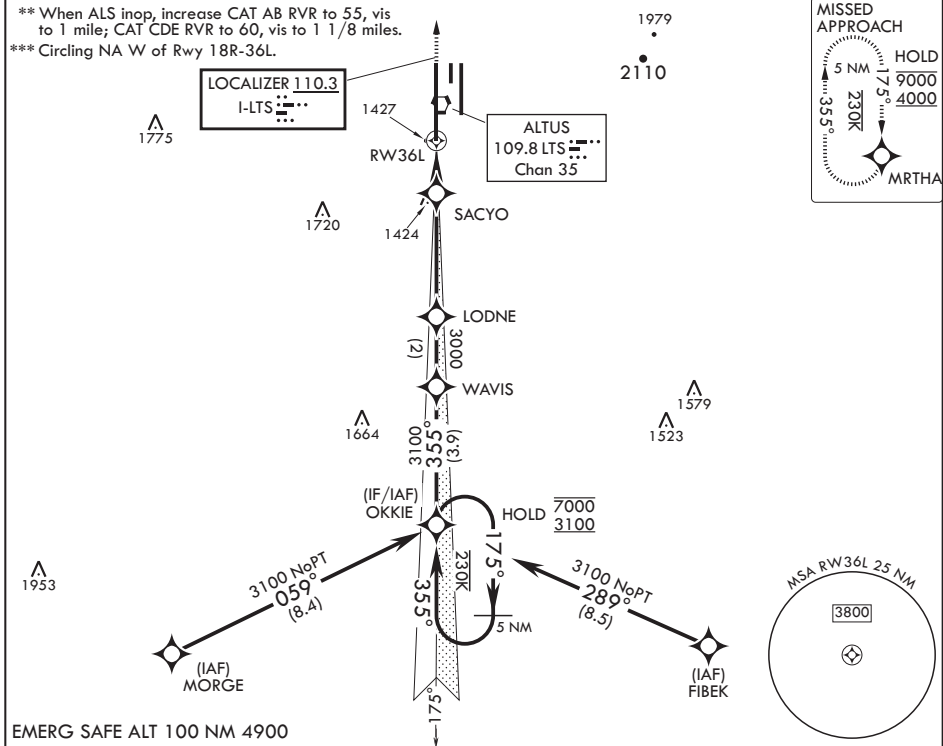
LOC I-LTS 110.3	APCH CRS 355°	Rwy Idg 13,440
		TDZE 1354
		Arprt Elev 1382

AL-482 (USAF)

ALTUS AFB (KLTS)

RNP APCH for LNAV	ALSF-1	MISSED APPROACH: Climb to 4000 direct MRTHA and hold.
RNAV1-GPS required for ILS.		
<p>⚠ * When ALS inop, increase CAT ABCDE RVR to 40, vis to 3/4 mile; RVR 18 authorized with use of FD or AP or HUD to DA.</p>		

ATIS* 109.8 273.5	FORT WORTH CENTER 133.5 350.35	APP CON 125.1 353.7	TOWER* 119.65 254.4	GND CON 121.85 275.8	CLNC DEL 120.65 284.7
-----------------------------	--	-------------------------------	-------------------------------	--------------------------------	---------------------------------



EMERG SAFE ALT 100 NM 4900

OKKIE (12)		WAVIS		LODNE		SACYO		VORTAC		4000	MRTHA	ELEV 1382	TDZE 1354
7000		3100		355°		3100		3000		1800		181	
GS 3.00°		TCH 55		175°		355°		3000		1800		181	
3.5 NM		1.5 NM		1 NM to RW 36L		36R		36L		13,440 x 1,50		17.6°	
CATEGORY		A		B		C		D		E		ASSAULT STRIP	
S-ILS 36L*		1554/24		200		(200-½)		TWR 1496		BCN 1524		3500 x 80	
LNAV MDA**		1740/24		386 (400-½)		1740/35		386 (400-¾)		13,440 x 1,50		0.4% UP	
CIRCLING***		1780-1		1840-1		1880-1½		2080-2¼		2180-2¾		0.3% UP	
		398 (400-1)		458 (500-1)		498 (500-1½)		698 (700-2¼)		798 (800-2¾)		0.3% UP	
												36L	
												355° 5 NM from FAF	
												HIRL all Rwys	

ALTUS, OKLAHOMA

34°40'N - 99°16'W

ALTUS AFB (KLTS)

Amdt 3 14JUL22
TERPS

ILS or RNAV (GPS) Y RWY 36L

SC-1, 13 JUN 2024 to 11 JUL 2024

SC-1, 13 JUN 2024 to 11 JUL 2024