

OKKIE THREE DEPARTURE (RNAV) (OKKIE3•OKKIE)

ALTUS, OKLAHOMA

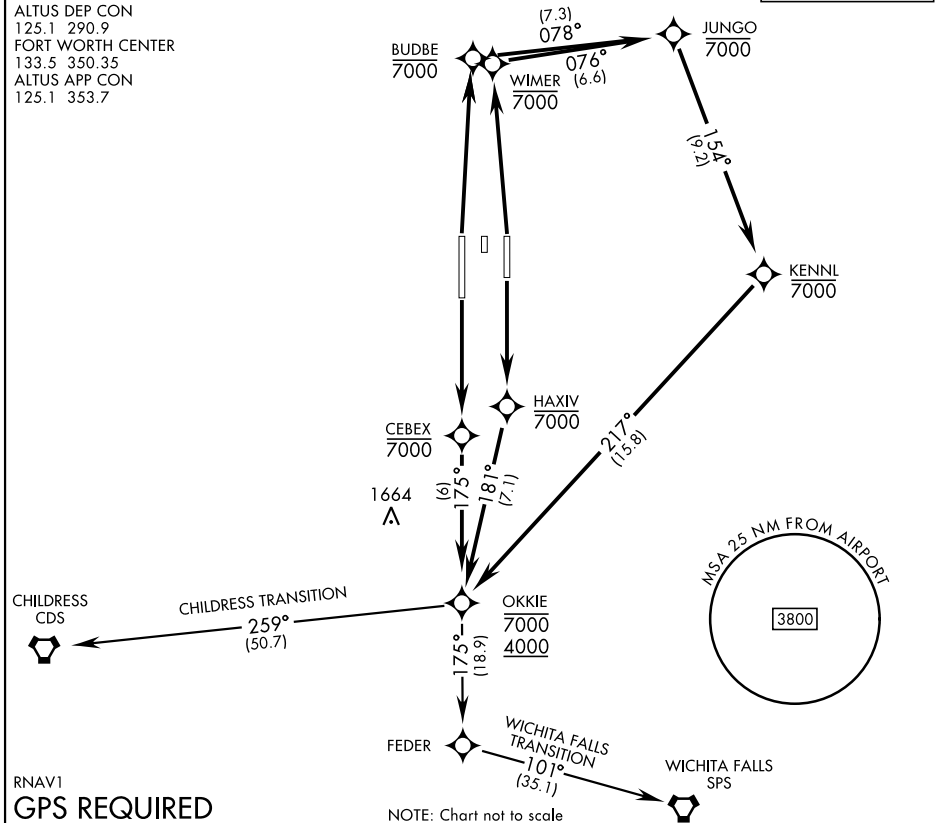
ATIS ★ 109.8 273.5
 CLNC DEL
 120.65 284.7
 GND CON
 121.85 275.8
 ALTUS TOWER ★
 119.65 254.4
 ALTUS DEP CON
 125.1 290.9
 FORT WORTH CENTER
 133.5 350.35
 ALTUS APP CON
 125.1 353.7

AL-482 [USAF]

Rwy	Knots	60	120	180	240	300	360
36L/R	V/V(fpm)	300	600	900	1200	1500	1800

Minimum Climb to 1900

TOP ALTITUDE:
9000



RNAV1
GPS REQUIRED

DEPARTURE ROUTE DESCRIPTION

TAKEOFF RWY 18L: Climb direct HAXIV, then on track 181° to OKKIE. Cross OKKIE between 4000 and 7000, thence...

TAKEOFF RWY 18R: Climb direct CEBEX, then on track 175° to OKKIE. Cross OKKIE between 4000 and 7000, thence...

TAKEOFF RWY 36L: Climb direct BUDBE, then on depicted route to OKKIE. Cross OKKIE between 4000 and 7000, thence...

TAKEOFF RWY 36R: Climb direct WIMER, then on depicted route to OKKIE. Cross OKKIE between 4000 and 7000, thence...

...via transition or assigned route. Maintain 9000. Expect filed altitude 10 minutes after departure.

CHILDRESS TRANSITION (OKKIE3-CDS): From over OKKIE track 259° to CDS.

WICHITA FALLS TRANSITION (OKKIE3-SPS): From over OKKIE track 175° to FEDER, then track 101° to SPS.

OKKIE THREE DEPARTURE (RNAV) (OKKIE3•OKKIE)

ALTUS, OKLAHOMA

SC-1, 13 JUN 2024 to 11 JUL 2024

SC-1, 13 JUN 2024 to 11 JUL 2024