

ALTUS, OKLAHOMA

# RNAV (RNP) X RWY 36L

APCH CRS	Rwy Idg	13,440
355°	TDZE	1354
	Arprt Elev	1382

AL-482 (USAF)

ALTUS AFB (KLTS)

RNP AR APCH - RF

ALSIF-1

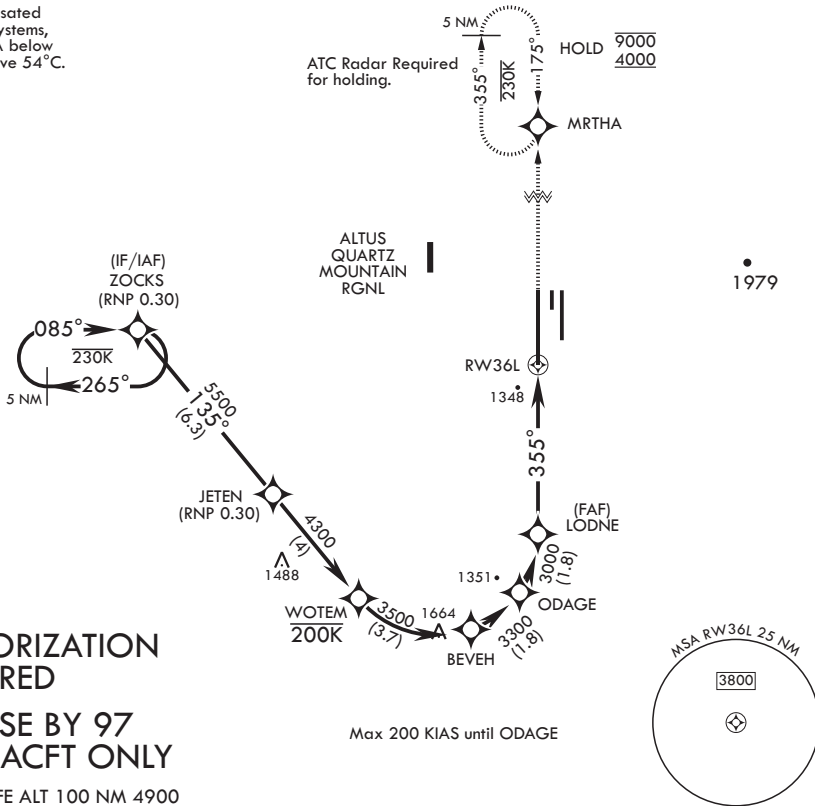
MISSED APPROACH: Climb to 4000 on track 355° to MRTHA and hold.

\* When ALS inop, increase RVR to 45, vis to 7/8 mile.  
\*\* When ALS inop, increase RVR to 55, vis to 1 mile.



ATIS*	APP CON	TOWER*	GND CON	CLNC DEL
109.8 273.5	125.1 353.7	119.65 254.4	121.85 275.8	120.65 284.7

For uncompensated Baro-VNAV systems, procedure NA below -17°C or above 54°C.



**AUTHORIZATION REQUIRED**  
**FOR USE BY 97 AMW ACFT ONLY**

EMERG SAFE ALT 100 NM 4900

<p>ZOCKS</p> <p>8000</p> <p>735°</p> <p>JETEN</p> <p>5500</p> <p>WOTEM</p> <p>4300</p> <p>BEVEH</p> <p>3500</p> <p>ODAGE</p> <p>3300</p> <p>LODNE</p> <p>3000</p> <p>355°</p> <p>RW36L</p> <p>GP 3.00°</p> <p>TCH 55</p>	<p>4000</p> <p>tr</p> <p>355°</p> <p>MRTHA</p> <p>ELEV 1382</p> <p>TDZE 1354</p>	<p>881</p> <p>781</p> <p>176°</p> <p>3500 x 90</p> <p>0.4% UP</p> <p>0.33% UP</p> <p>9001 x 150</p> <p>36R</p> <p>ASSAULT STRIP</p> <p>TWR BCN</p> <p>13,440 x 1,50°</p> <p>36L</p> <p>1394</p> <p>355° to RW36L</p>															
<table border="1"> <thead> <tr> <th>CATEGORY</th> <th>A</th> <th>B</th> <th>C</th> <th>D</th> </tr> </thead> <tbody> <tr> <td>RNP 0.10 DA*</td> <td>1646/24</td> <td>292</td> <td>(300-1/2)</td> <td></td> </tr> <tr> <td>RNP 0.30 DA**</td> <td>1732/35</td> <td>378</td> <td>(400-3/8)</td> <td></td> </tr> </tbody> </table>			CATEGORY	A	B	C	D	RNP 0.10 DA*	1646/24	292	(300-1/2)		RNP 0.30 DA**	1732/35	378	(400-3/8)	
CATEGORY	A	B	C	D													
RNP 0.10 DA*	1646/24	292	(300-1/2)														
RNP 0.30 DA**	1732/35	378	(400-3/8)														

ALTUS, OKLAHOMA

34°40'N - 99°16'W

ALTUS AFB (KLTS)

Amdt 2 14JUL22

# RNAV (RNP) X RWY 36L

SC-1, 13 JUN 2024 to 11 JUL 2024

SC-1, 13 JUN 2024 to 11 JUL 2024