

ALTUS, OKLAHOMA

RNAV (RNP) Y RWY 18L

APCH CRS	Rwy Idg	9001
175°	TDZE	1382
	Arpt Elev	1382

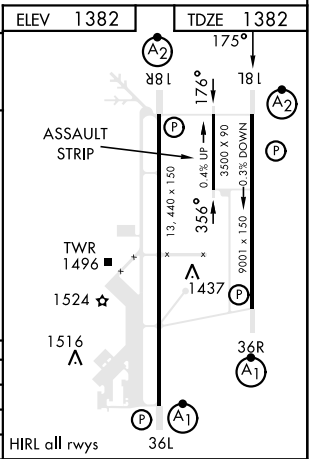
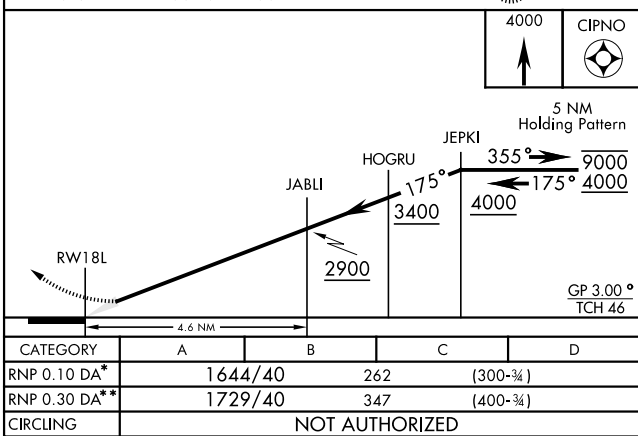
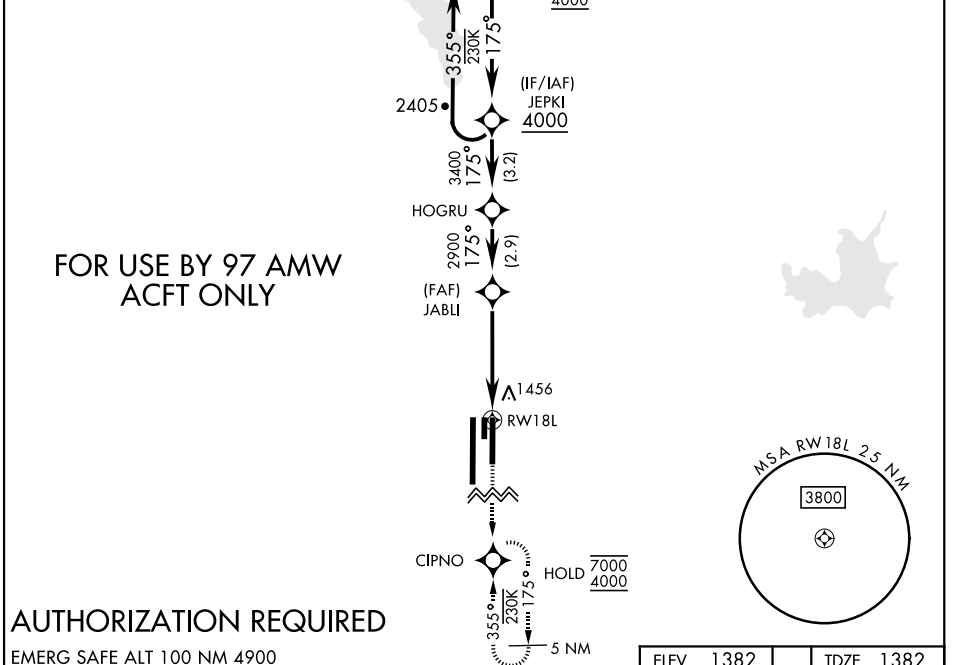
AL-482 [USAF]

ALTUS AFB (KLTS)

RNP AR APCH - GPS	SALSFS A2	MISSED APPROACH: Climb to 4000 direct CIPNO and hold.
-------------------	--------------	---

ATIS ★	FORT WORTH CENTER	APP CON	TOWER ★	GND CON	CLNC DEL
109.8 273.5	133.5 350.35	125.1 353.7	119.65 254.4	121.85 275.8	120.65 284.7

For uncompensated Baro-VNAV systems, procedure NA below -17°C (2°F) or above 54°C (130°F).



CATEGORY	A	B	C	D
RNP 0.10 DA*	1644/40	262	(300-¾)	
RNP 0.30 DA**	1729/40	347	(400-¾)	
CIRCLING	NOT AUTHORIZED			

ALTUS, OKLAHOMA
Amdt 2 10AUG23

34°40'N-99°16'W

ALTUS AFB (KLTS)

RNAV (RNP) Y RWY 18L

SC-1, 13 JUN 2024 to 11 JUL 2024

SC-1, 13 JUN 2024 to 11 JUL 2024