

ALTUS, OKLAHOMA

VOR or TACAN RWY 18R


VORTAC LTS 109.8 Chan 35	APCH CRS 171°	Rwy Ldg 13,440 TDZE 1378 Arprt Elev 1382
--	-------------------------	---

AL-482 [USAF]

ALTUS AFB (KLTS)

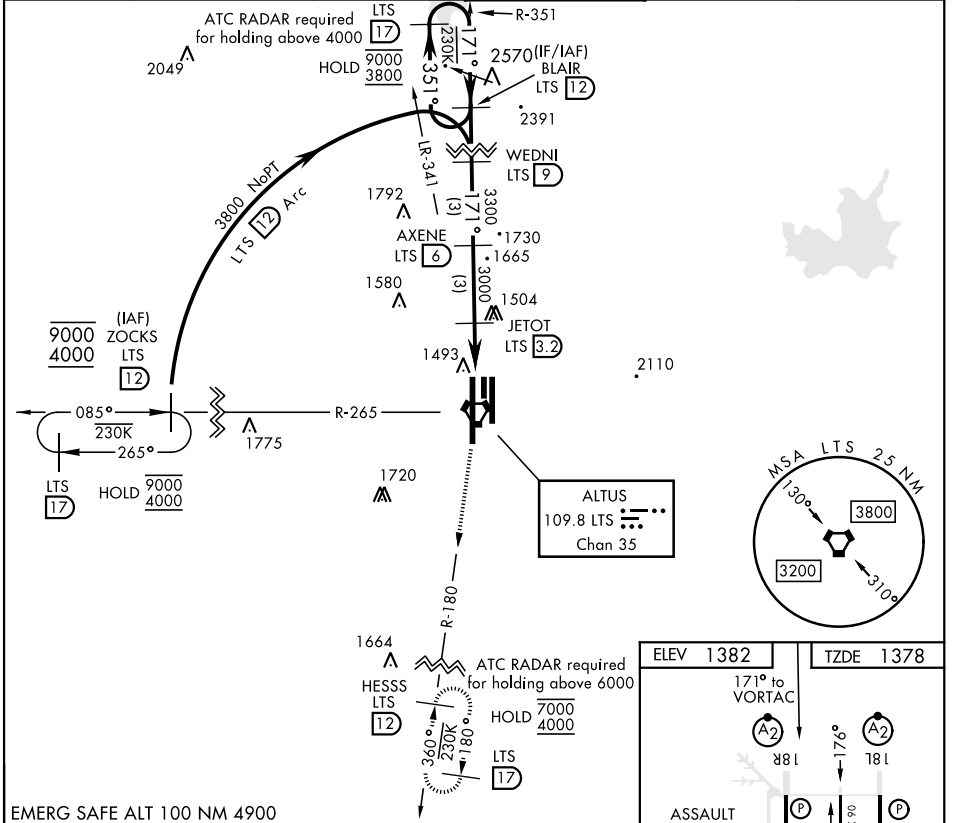
DME required.

▼ * When ALS inop, increase CAT AB RVR to 55 and vis to 1 mile, CAT CDE RVR to 60 and vis to 1½ miles.
** Circling not authorized W of Rwy 18R-36L.

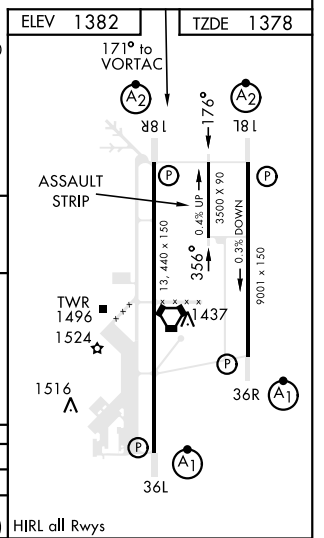
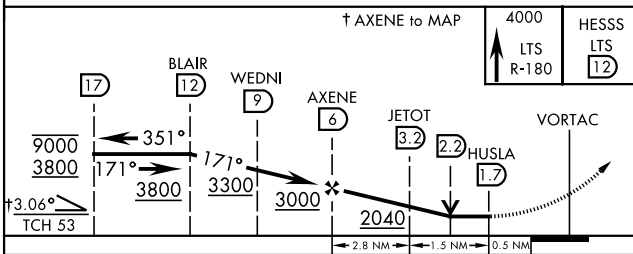
SALSF 

MISSED APPROACH: Climb to 4000 on LTS VORTAC R-180 to HESSS and hold.

ATIS ★ 109.8 273.5	FORT WORTH CENTER 133.5 350.35	APP CON 125.1 353.7	TOWER ★ 119.65 254.4	GND CON 121.85 275.8	CLNC DEL 120.65 284.7
------------------------------	--	-------------------------------	--------------------------------	--------------------------------	---------------------------------



EMERG SAFE ALT 100 NM 4900



CATEGORY	A	B	C	D	E
S-18R *	1760/40	382 (400-¾)	1760/45	382	(400-⅞)
CIRCLING **	1780-1 398 (400-1)	1840-1 458 (500-1)	1880-1½ 498 (500-1½)	2080-2¼ 698 (700-2¼)	2180-2¾ 798 (800-2¾)

HIRL all Rwys

ALTUS, OKLAHOMA

34° 40' N-99° 16' W

ALTUS AFB (KLTS)

Amtd 4 14JUL22

VOR or TACAN RWY 18R

SC-1, 13 JUN 2024 to 11 JUL 2024

SC-1, 13 JUN 2024 to 11 JUL 2024