

VORTAC GCK <b>113.3</b> Chan <b>80</b>	APP CRS <b>173°</b>	Rwy Idg <b>7299</b> TDZE <b>2889</b> Apt Elev <b>2891</b>
--	------------------------	---

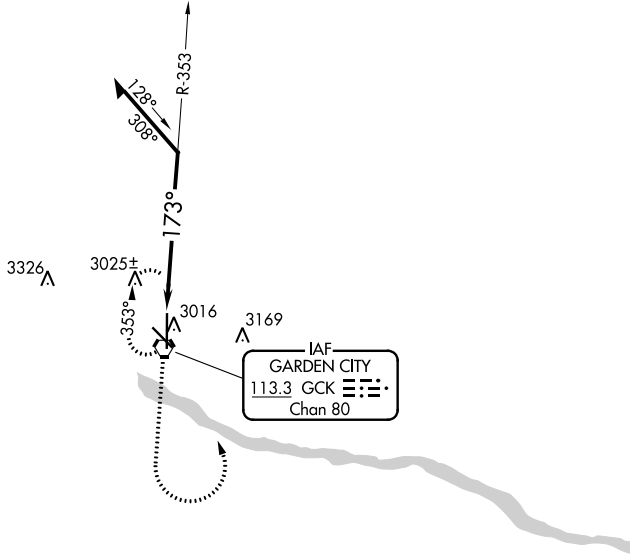
# VOR RWY 17

GARDEN CITY RGNL (GCK)

**⚠** When local altimeter setting not received, use Dodge City Rgnl altimeter setting and increase all MDA 140 feet and Circling Cat C visibility ½ SM and Circling Cat D visibility ¼ SM. VDP NA when using Dodge City Rgnl altimeter setting.

**MISSED APPROACH:**  
Climb to 4000, then climbing left turn to 4500 direct GCK VORTAC and hold.

ASOS <b>121.325</b>	KANSAS CITY CENTER <b>125.2 285.425</b>	GARDEN CITY TOWER * <b>118.15 (CTAF) 0 254.4</b>	GND CON <b>119.0 254.4</b>	UNICOM <b>122.95</b>
------------------------	--	---	-------------------------------	-------------------------

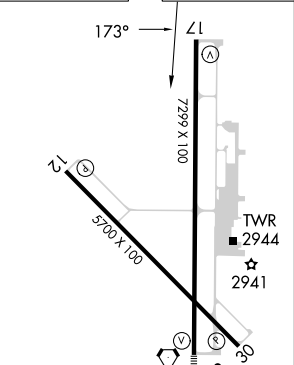


NC-2, 13 JUN 2024 to 11 JUL 2024

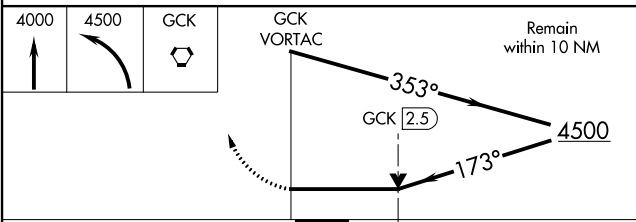
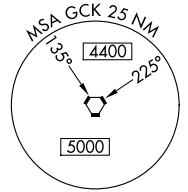
NC-2, 13 JUN 2024 to 11 JUL 2024

A3930

ELEV 2891	<b>D</b>	TDZE 2889
-----------	----------	-----------



REIL Rwy 12, 17, and 30  
MIRL Rwy 12-30  
HIRL Rwy 17-35



CATEGORY	A	B	C	D
S-17	3340-1	451 (500-1)	3340-1¼ 451 (500-1¼)	3340-1½ 451 (500-1½)
<b>C</b> CIRCLING	3340-1 449 (500-1)	3360-1 469 (500-1)	3480-1½ 589 (600-1½)	3480-2 589 (600-2)