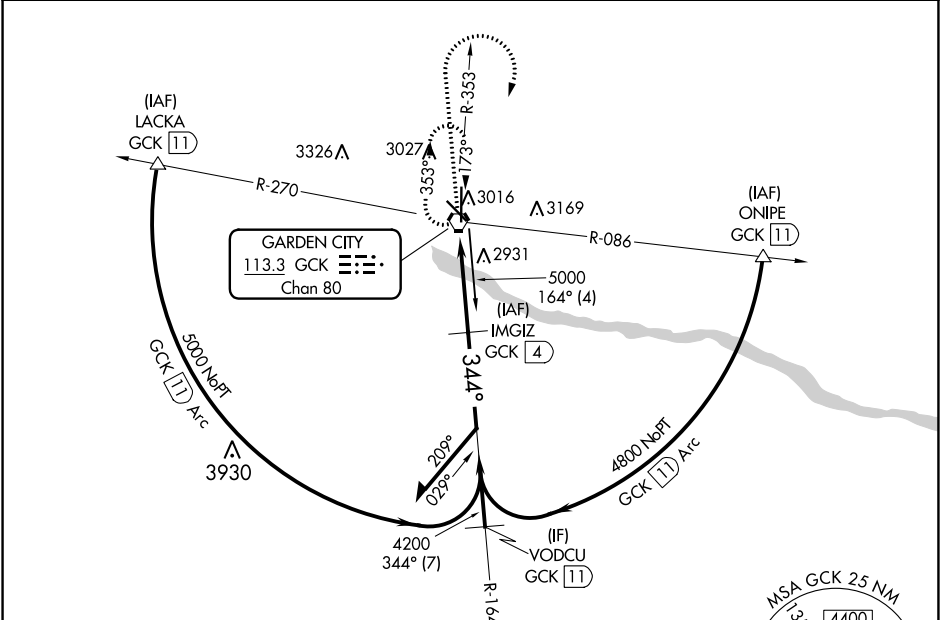


VORTAC GCK <b>113.3</b> Chan <b>80</b>	APP CRS <b>344°</b>	Rwy Idg TDZE Apt Elev	<b>7299</b> <b>2885</b> <b>2891</b>
--	------------------------	-----------------------------	---

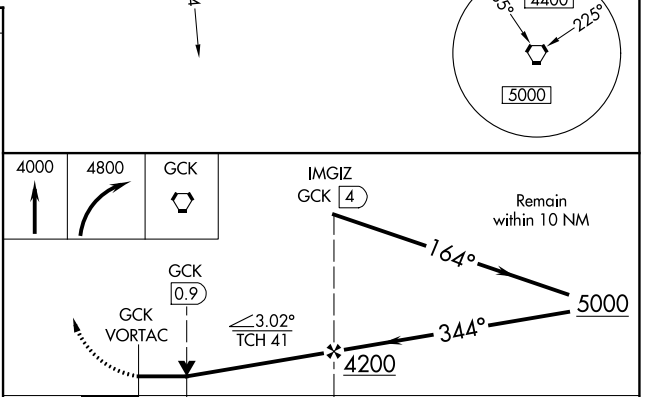
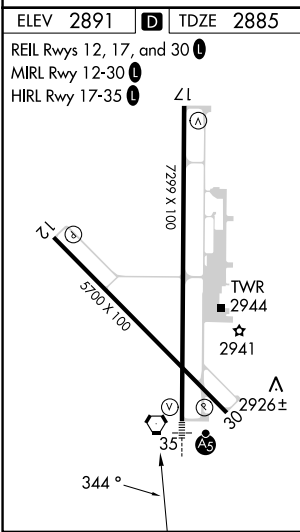
**VOR RWY 35**  
GARDEN CITY RGNL (GCK)

DME required.		MALS R	MISSED APPROACH: Climb to 4000 then climbing right turn to 4800 direct GCK VORTAC and hold.	
<p><b>V</b> For inop ALS, increase S-35 Cat C visibility to ¾ SM. <b>A</b> Inop table does not apply to S-35 Cat D.</p>				
ASOS <b>121.325</b>	KANSAS CITY CENTER <b>125.2 285.425</b>	GARDEN CITY TOWER ★ <b>118.15 (CTAF) 0 254.4</b>	GND CON <b>119.0 254.4</b>	UNICOM <b>122.95</b>



NC-2, 13 JUN 2024 to 11 JUL 2024

NC-2, 13 JUN 2024 to 11 JUL 2024



CATEGORY	A	B	C	D
S-35	3200-½ 315 (400-½)		3200-¾ 315 (400-¾)	3200-1 315 (400-1)
<b>C</b> CIRCLING	3320-1 429 (500-1)	3360-1 469 (500-1)	3480-1½ 589 (600-1½)	3480-2 589 (600-2)