

VORTAC GCK <b>113.3</b> Chan <b>80</b>	APP CRS <b>286°</b>	Rwy ldg TDZE Apt Elev <b>5700</b> <b>2885</b> <b>2891</b>
--	------------------------	--

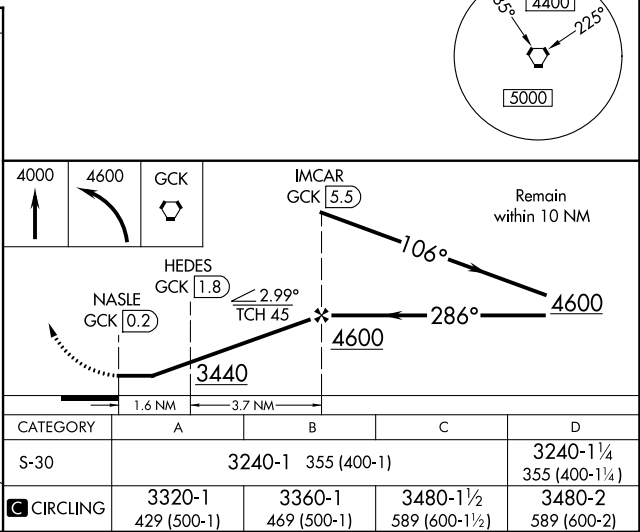
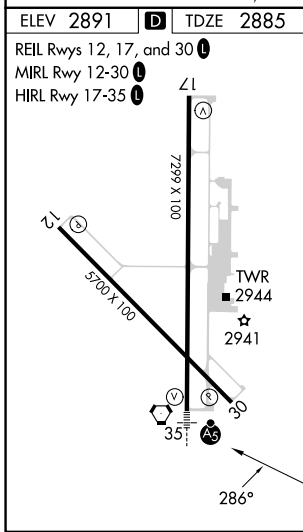
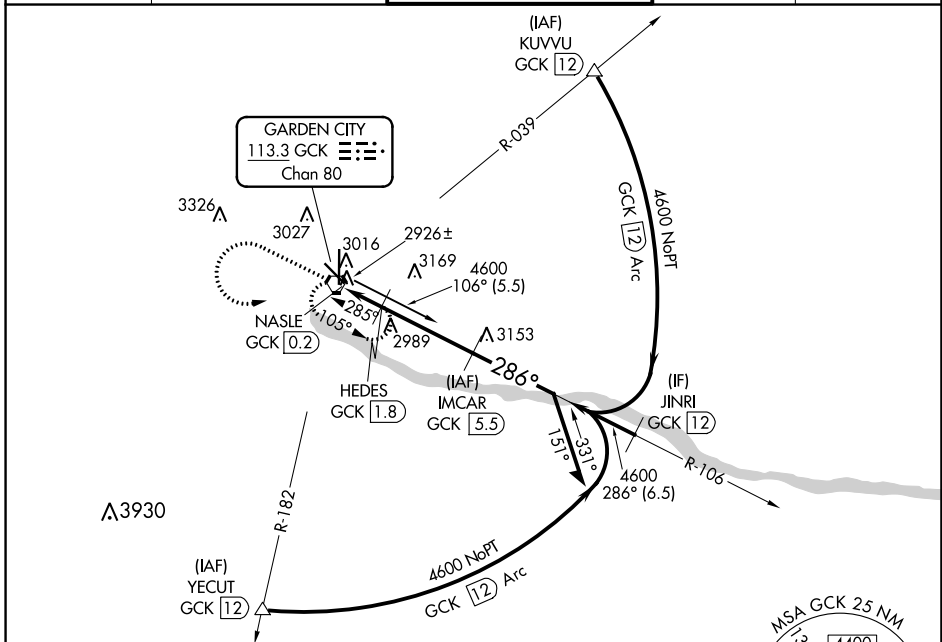
# VOR/DME RWY 30

GARDEN CITY RGNL (GCK)

**⚠** When local altimeter setting not received, use Dodge City Rgnl altimeter setting and increase all MDA 140 feet and Circling Cat C visibility ½ SM and Circling Cat D visibility ¼ SM.

**MISSED APPROACH:**  
Climb to 4000 then climbing left turn to 4600 direct GCK VORTAC and hold.

ASOS <b>121,325</b>	KANSAS CITY CENTER <b>125.2 285.425</b>	GARDEN CITY TOWER ★ <b>118.15 (CTAF) 0 254.4</b>	GND CON <b>119.0 254.4</b>	UNICOM <b>122.95</b>
------------------------	--	---	-------------------------------	-------------------------



NC-2, 13 JUN 2024 to 11 JUL 2024

NC-2, 13 JUN 2024 to 11 JUL 2024