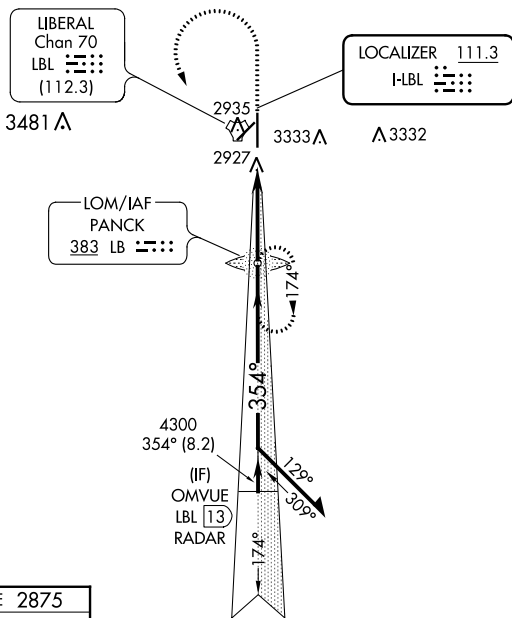


LOC I-LBL 111.3	APP CRS 354°	Rwy Idg TDZE Apt Elev	7105 2875 2886
---------------------------	------------------------	-----------------------------	---

ILS or LOC RWY 35
LIBERAL MID-AMERICA RGNL (L.B.L)

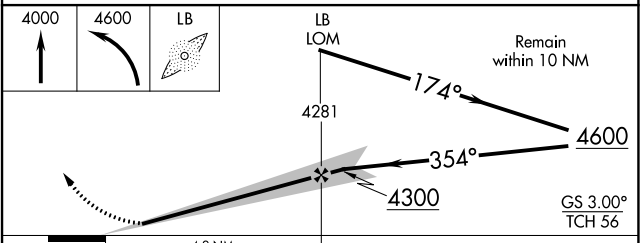
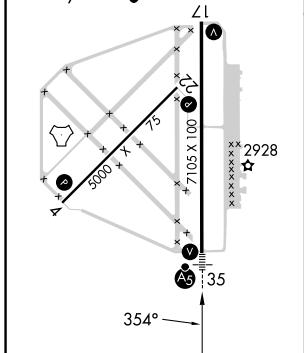
ADF or RADAR required.	MALSR 	MISSED APPROACH: Climb to 4000 then climbing left turn to 4600 direct PANCK LOM and hold.
Circling NA east of Rwy 17-35. For inop ALS, increase S-LOC 35 Cats C/D visibility to ½ SM.		

AWOS-3PT 118.375	KANSAS CITY CENTER 134.0 257.625	UNICOM 122.8 (CTAF)
----------------------------	--	-------------------------------



ELEV 2886	D	TDZE 2875
-----------	----------	-----------

REIL Rwys 4, 17 and 22
MIRL Rwy 4-22
HIRL Rwy 17-35



CATEGORY	A	B	C	D
S-ILS 35		3075-½	200 (200-½)	
S-LOC 35		3180-½	305 (300-½)	
C CIRCLING	3280-1 394 (400-1)	3400-1 514 (600-1)	3400-1½ 514 (600-1½)	3460-2 574 (600-2)

NC-2, 13 JUN 2024 to 11 JUL 2024

NC-2, 13 JUN 2024 to 11 JUL 2024