

WAAS CH 90405 W22A	APP CRS 219°	Rwy Idg TDZE 2880 Apt Elev 2885
--	------------------------	---

RNAV (GPS) RWY 22

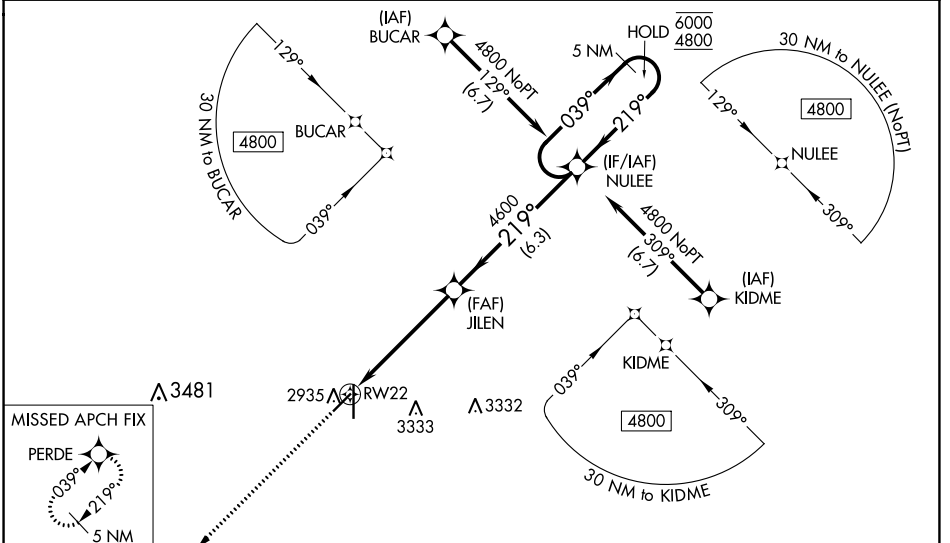
LIBERAL MID-AMERICA RGNL (L.B.L.)

RNP APCH - GPS.

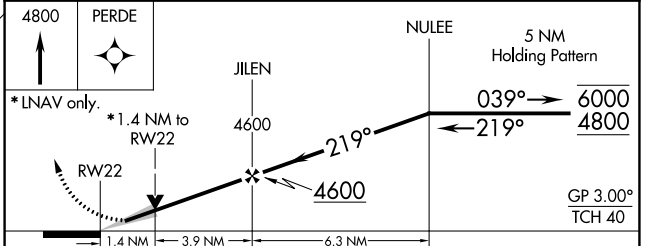
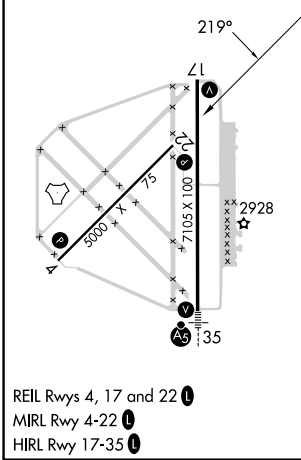
⚠ Circling NA east of Rwy 17-35. Baro-VNAV NA when using Guymon Muni altimeter setting. For uncompensated Baro-VNAV systems, LNAV/VNAV NA below -20°C or above 54°C. VDP NA when using Guymon Muni altimeter setting. When local altimeter setting not received, use Guymon altimeter setting and increase LPV DA to 3192 feet; Increase LNAV/VNAV DA to 3280 feet and all visibilities ½ SM. Increase all MDAs 120 feet and LNAV visibility Cat C/D ¾ SM, and Circling visibility Cat C/D ¼ SM.

MISSED APPROACH: Climb to 4800 direct PERDE and hold.

AWOS-3PT 118.375	KANSAS CITY CENTER 134.0 257.625	UNICOM 122.8 (CTAF)
----------------------------	--	-------------------------------



ELEV 2885	D	TDZE 2880
------------------	----------	------------------



CATEGORY	A	B	C	D
LPV DA		3080-1	200 (200-1)	
LNAV/VNAV DA		3168-1	288 (300-1)	
LNAV MDA	3360-1	480 (500-1)	3360-1 3/8	480 (500-1 3/8)
C CIRCLING	3360-1 475 (500-1)	3360-1 1/8 475 (500-1 1/8)	3640-2 1/4 755 (800-2 1/4)	3640-2 1/2 755 (800-2 1/2)

NC-2, 13 JUN 2024 to 11 JUL 2024

NC-2, 13 JUN 2024 to 11 JUL 2024