

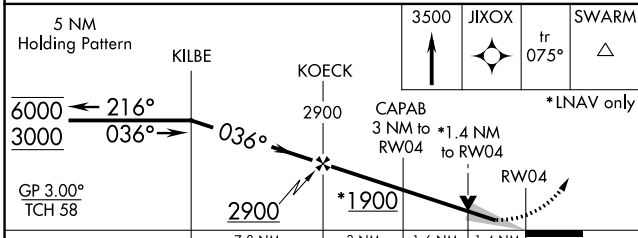
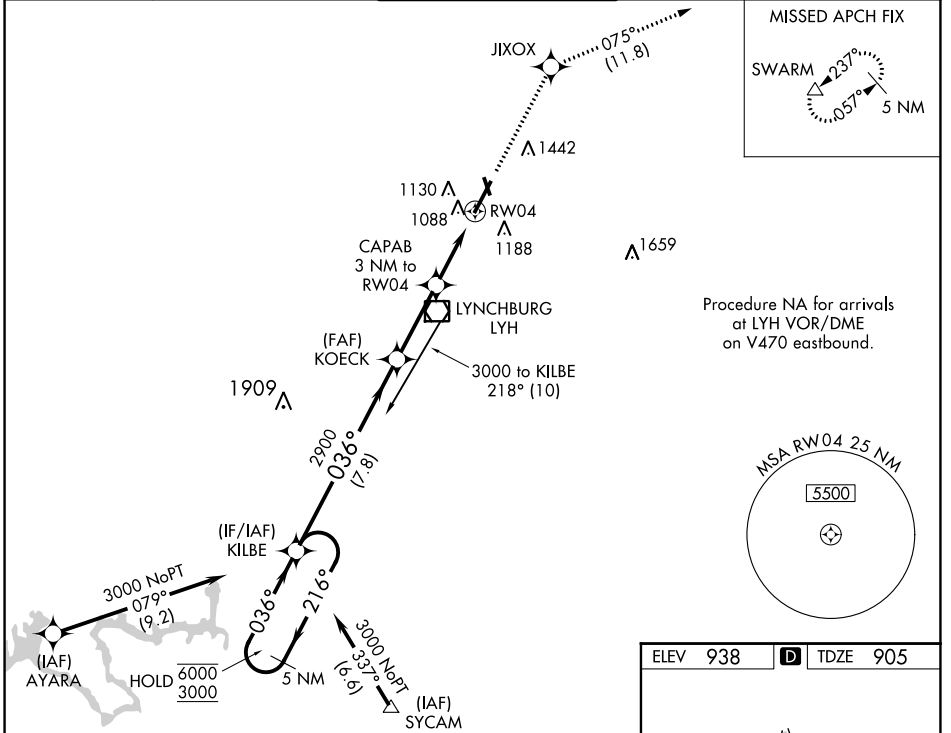
WAAS CH <b>58205</b>	APP CRS <b>036°</b>	Rwy Idg TDZE Apt Elev	<b>6800</b> <b>905</b> <b>938</b>
-------------------------	------------------------	-----------------------------	---

# RNAV (GPS) RWY 4

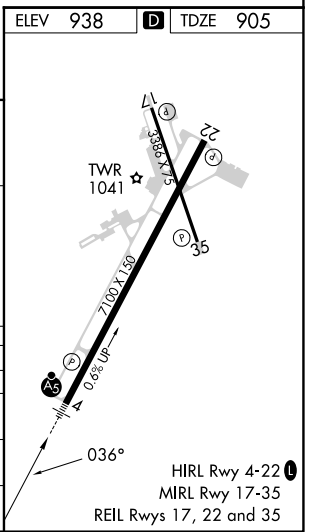
LYNCHBURG RGNL/PRESTON GLENN FLD (LYH)

RNP APCH.	MALSR	MISSED APPROACH: Climb to 3500 direct JIXOX and track 075° to SWARM and hold.
<p>▼ For uncompensated Baro-VNAV systems, LNAV/VNAV NA below -16°C or above 47°C. For inop ALS, increase LNAV Cat A and B visibility to RVR 5000.</p> <p>▲ Circling Rwy 17 NA at night.</p>		

ATIS <b>119.8</b>	ROANOKE APP CON <b>135.0 254.325</b>	LYNCHBURG TOWER ★ <b>127.65 (CTAF) 0 257.8</b>	GND CON <b>121.9</b>	UNICOM <b>122.95</b>
----------------------	---	---	-------------------------	-------------------------



5 NM Holding Pattern		3500	JIXOX	SWARM
KILBE		2900	tr 075°	△
6000 ← 216°	← 036° →	*LNAV only		
3000	036°	CAPAB 3 NM to *1.4 NM to RW04		
GP 3.00° TCH 58	2900	*1900	RW04	
7.8 NM		3 NM	1.6 NM	1.4 NM
CATEGORY	A	B	C	D
LPV DA	1175/40		270 (300-¾)	
LNAV/VNAV DA	1394/60		489 (500-1¼)	
LNAV MDA	1400/40	495 (500-¾)	1400/50	495 (500-1)
CIRCLING	1660-1 722 (800-1)	1780-1¼ 842 (900-1¼)	1800-2½ 862 (900-2½)	1800-2¾ 862 (900-2¾)



NE-3, 13 JUN 2024 to 11 JUL 2024

NE-3, 13 JUN 2024 to 11 JUL 2024

# RNAV (GPS) RWY 4