

VOR/DME LYH	Rwy Idg	7100
109.2	TDZE	938
Chan 29	Apt Elev	938

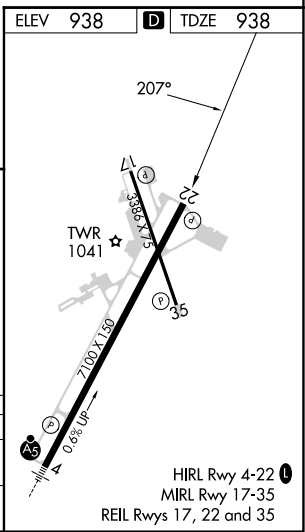
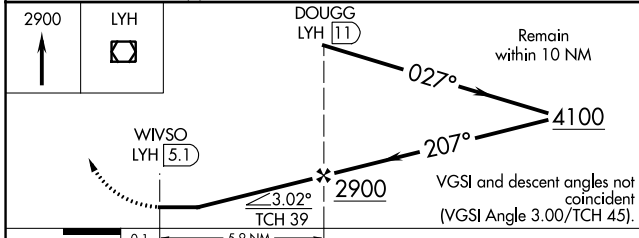
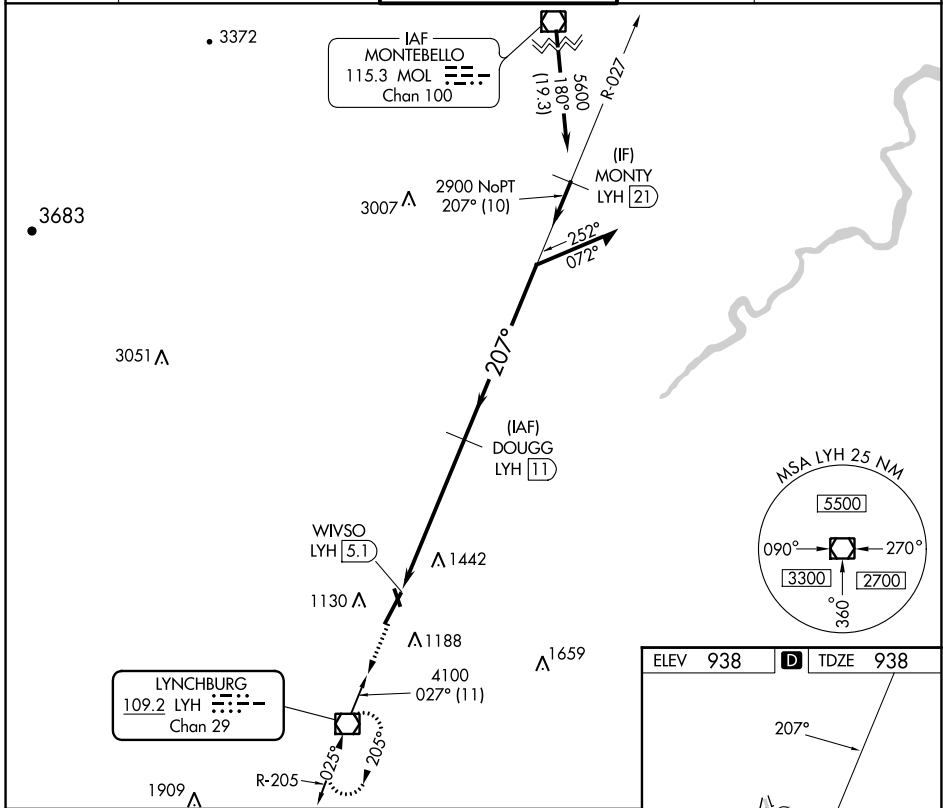
APP CRS
207°

VOR RWY 22

LYNCHBURG RGNL/PRESTON GLENN FLD (LYH)

DME required.	MISSED APPROACH: Climb to 2900 direct LYH VOR/DME and hold.
<p>▼ Rwy 22 helicopter visibility reduction below 3/4 SM NA.</p> <p>▲ Circling Rwy 17 NA at night.</p>	

ATIS 119.8	ROANOKE APP CON 135.0 254,325	LYNCHBURG TOWER ★ 127.65 (CTAF) 0 257.8	GND CON 121.9	UNICOM 122.95
----------------------	---	---	-------------------------	-------------------------



CATEGORY	A	B	C	D
S-22	1740-1 802 (900-1)	1740-1¼ 802 (900-1¼)	1740-2¼ 802 (900-2¼)	1740-2½ 802 (900-2½)
CIRCLING	1740-1 802 (900-1)	1780-1¼ 842 (900-1¼)	1800-2½ 862 (900-2½)	1800-2¾ 862 (900-2¾)

VOR RWY 22

NE-3, 13 JUN 2024 to 11 JUL 2024

NE-3, 13 JUN 2024 to 11 JUL 2024