

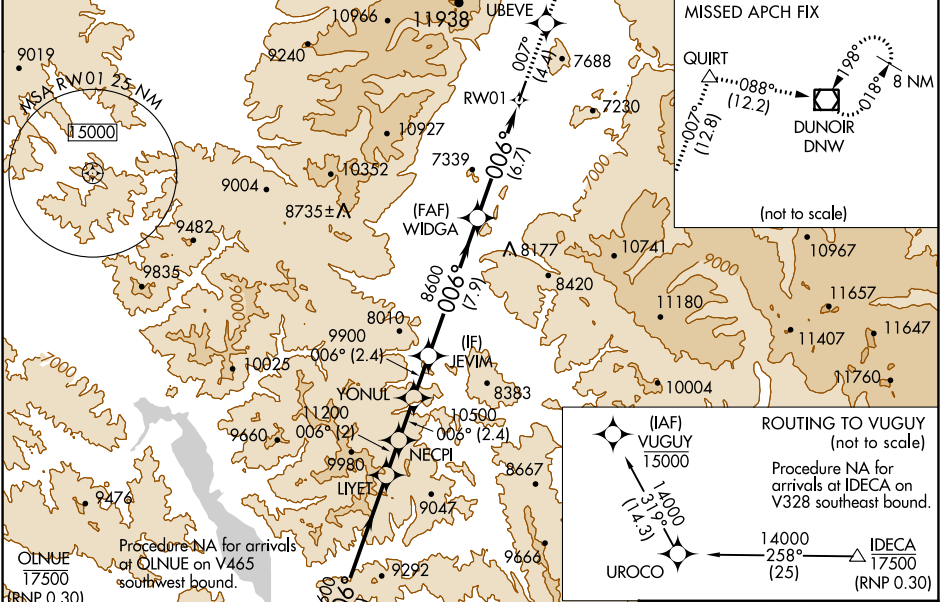
APP CRS	Rwy Idg	6300
006°	TDZE	6431
	Apt Elev	6451

RNAV (RNP) Z RWY 1

JACKSON HOLE (JAC)

RNP AR APCH For uncompensated Baro-VNAV systems, procedure NA below -27°C or above 54°C. -22°C Inop table does not apply to RNP 0.11* all Cats visibility. For inop ALS, increase RNP 0.30* all Cats visibility to 7/8 SM. Missed approach requires RNP less than 1.0.		MALS 	MISSED APPROACH: Climb to 14000 on track 007° to UBEVE and track 007° to QUIRT and track 088° to DNW VOR/DME and hold, continue climb-in-hold to 14000. * Missed approach requires minimum climb of 330 feet per NM to 8200; if unable to meet climb gradient, see RNAV (RNP) Y RWY 1.
--	--	-----------------	--

D-ATIS 120.625	SALT LAKE CENTER 133.25 285.6	JACKSON TOWER* 118.075 (CTAF)	GND CON 124.55	UNICOM 122.95
--------------------------	---	--	--------------------------	-------------------------



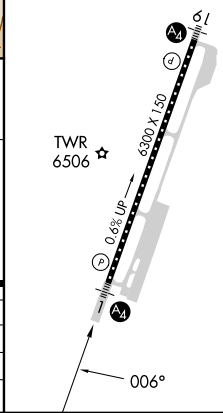
ELEV 6451	D TDZE 6431
-----------	--------------------

CL Rwy 1-19

HIRL Rwy 1-19

VUGUY	LYET	NECPI	UBEVE	QUIRT	DNW
14000	11600	11200	10500	8600	8600
GP 3.00°					
TCH 50					
	12 NM	2 NM	2.4	2.4	7.9 NM
					6.7 NM
CATEGORY	A	B	C	D	
RNP 0.11 DA*		6690-3/4	259 (300-3/4)		
RNP 0.30 DA*		6743-3/4	312 (300-3/4)		

AUTHORIZATION REQUIRED



NW-1, 13 JUN 2024 to 11 JUL 2024

NW-1, 13 JUN 2024 to 11 JUL 2024