

WAAS CH 82437 W16A	APP CRS 163°	Rwy Idg TDZE Apt Elev	8203 7289 7289
--	------------------------	-----------------------------	---

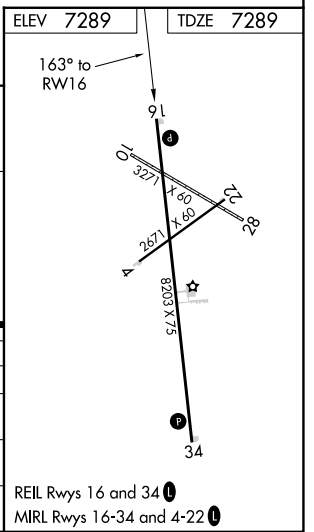
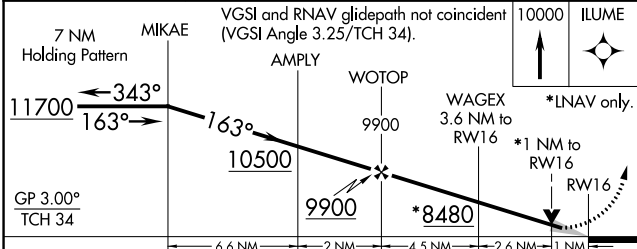
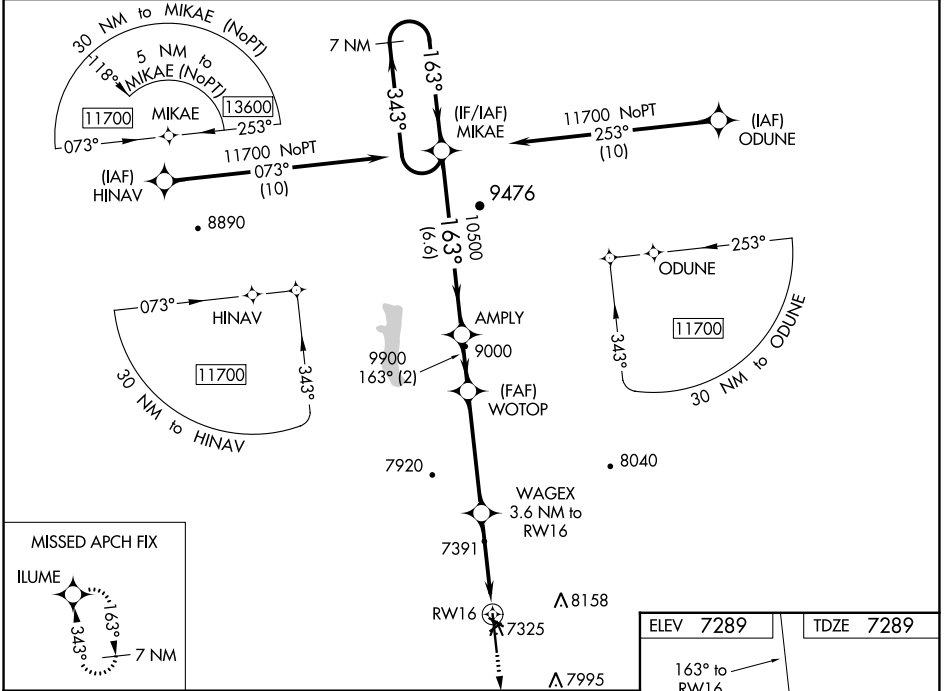
RNAV (GPS) RWY 16

KEMMERER MUNI (EMM)

⚠ Baro-VNAV NA when using Evanson altimeter setting. For uncompensated Baro-VNAV systems, LNAV/VNAV NA below -27°C (-16°F) or above 54°C (130°F). DME/DME RNP-0.3 NA. VDP NA when using Evanson altimeter setting. Night landing: Rwy 4, 10, 22, 28 NA. When local altimeter setting not received, use Evanson altimeter setting: Increase all DA 111 feet and visibilities ¼ mile; increase all MDA 120 feet.

MISSED APPROACH:
Climb to 10000 direct ILUME and hold.

AWOS-3PT 119.675	SALT LAKE CITY CENTER 124.35 353.5	UNICOM 122.8 (CTAF) 0*
----------------------------	--	----------------------------------



CATEGORY	A	B	C	D
LPV DA	7539-1	250 (300-1)		NA
LNAV/VNAV DA	7539-1	250 (300-1)		NA
LNAV MDA	7660-1	371 (400-1)		NA
C CIRCLING	7660-1 371 (400-1)	8240-1½ 951 (1000-1½)		NA

NW-1, 13 JUN 2024 to 11 JUL 2024

NW-1, 13 JUN 2024 to 11 JUL 2024