

WAAS CH 90337 W34A	APP CRS 343°	Rwy Idg TDZE Apt Elev	8203 7280 7289
--	------------------------	-----------------------------	---

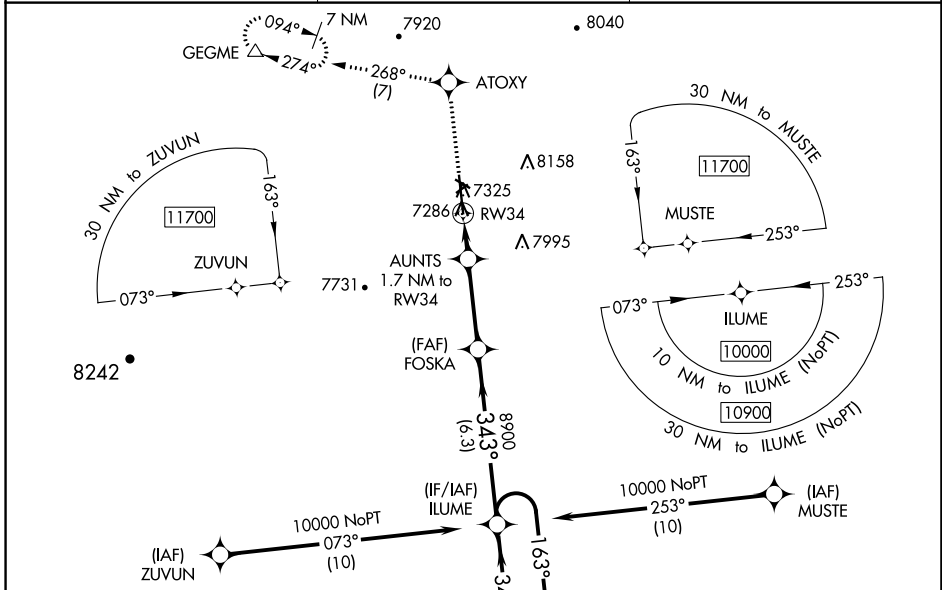
RNAV (GPS) RWY 34

KEMMERER MUNI (EMM)

⚠ Baro-VNAV and VDP NA when using Evanston altimeter setting.
⚠ For uncompensated Baro-VNAV systems, LNAV/VNAV NA below -27°C (-16°F) or above 54°C (130°F). DME/DME RNP-0.3 NA.
 Night landing: Rwy 4, 10, 22, 28 NA. When local altimeter setting not received, use Evanston altimeter setting: increase all DA 111 feet and visibilities 1/8 mile; increase all MDA 120 feet.

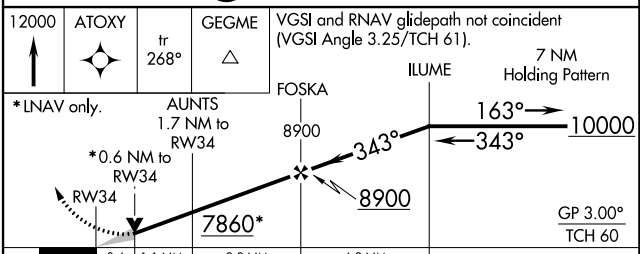
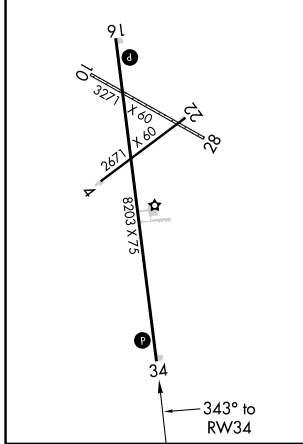
MISSED APPROACH: Climb to 12000 direct ATOXY and on track 268° direct GEGME and hold, continue climb-in-hold to 12000.

AWOS-3PT 119.675	SALT LAKE CITY CENTER 124.35 353.5	UNICOM 122.8 (CTAF) 0*
----------------------------	--	----------------------------------



ELEV 7289	TDZE 7280
-----------	-----------

REIL Rwy 16 and 34
 MIRL Rwy 16-34 and 4-22



CATEGORY	A	B	C	D
LPV DA	7530-1	250 (300-1)		NA
LNAV/VNAV DA	7530-1	250 (300-1)		NA
LNAV MDA	7540-1	260 (300-1)		NA
C CIRCLING	7660-1 371 (400-1)	8240-1½ 951 (1000-1½)		NA

NW-1, 13 JUN 2024 to 11 JUL 2024

NW-1, 13 JUN 2024 to 11 JUL 2024