

| | | | |
|--|------------------------|-----------------------------|---|
| VOR/DME VIH 117.7 Chan 124 | APP CRS 056° | Rwy Idg TDZE Apt Elev | 5289 1137 1148 |
|--|------------------------|-----------------------------|---|

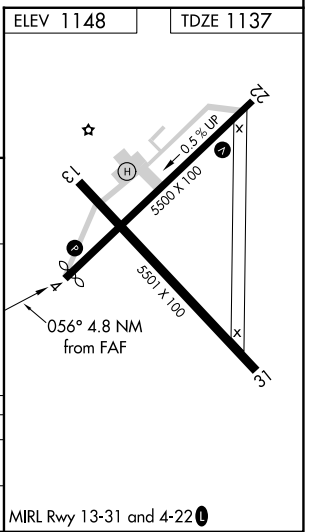
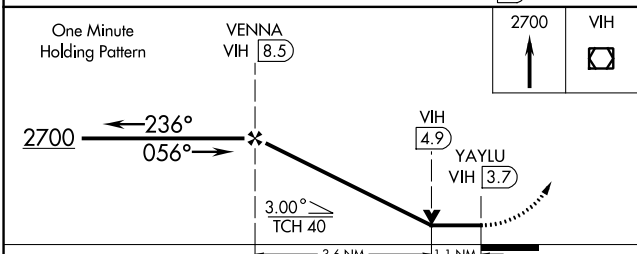
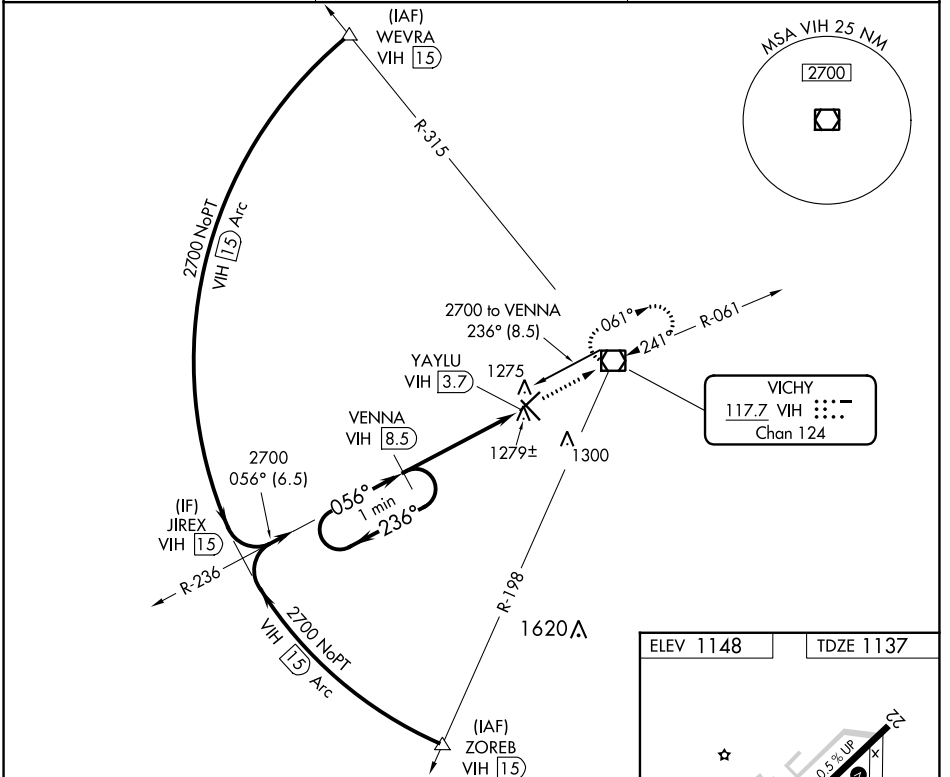
VOR/DME RWY 4

ROLLA NTL (VIH)

⚠ Visibility reduction by helicopters NA. When local altimeter setting not received, use Fort Leonard Wood altimeter setting; increase all MDA 80 feet and S-4 Cat D and Circling Cat D visibility ¼ SM. VDP NA with Fort Leonard Wood altimeter setting.

MISSED APPROACH: Climb to 2700 direct VIH VOR/DME and hold.

| | | |
|------------------------|---|---------------------------------|
| ASOS 119.025 | KANSAS CITY CENTER 128.35 284.675 | UNICOM 123.0 (CTAF) 0 |
|------------------------|---|---------------------------------|



| CATEGORY | A | B | C | D |
|----------|--------|-------------|---------|-----------------------|
| S-4 | 1540-1 | 403 (400-1) | 1540-1¼ | 403 (400-1¼) |
| CIRCLING | 1600-1 | 452 (500-1) | 1600-1½ | 1740-2 592 (600-2) |

NC-3, 13 JUN 2024 to 11 JUL 2024

NC-3, 13 JUN 2024 to 11 JUL 2024