

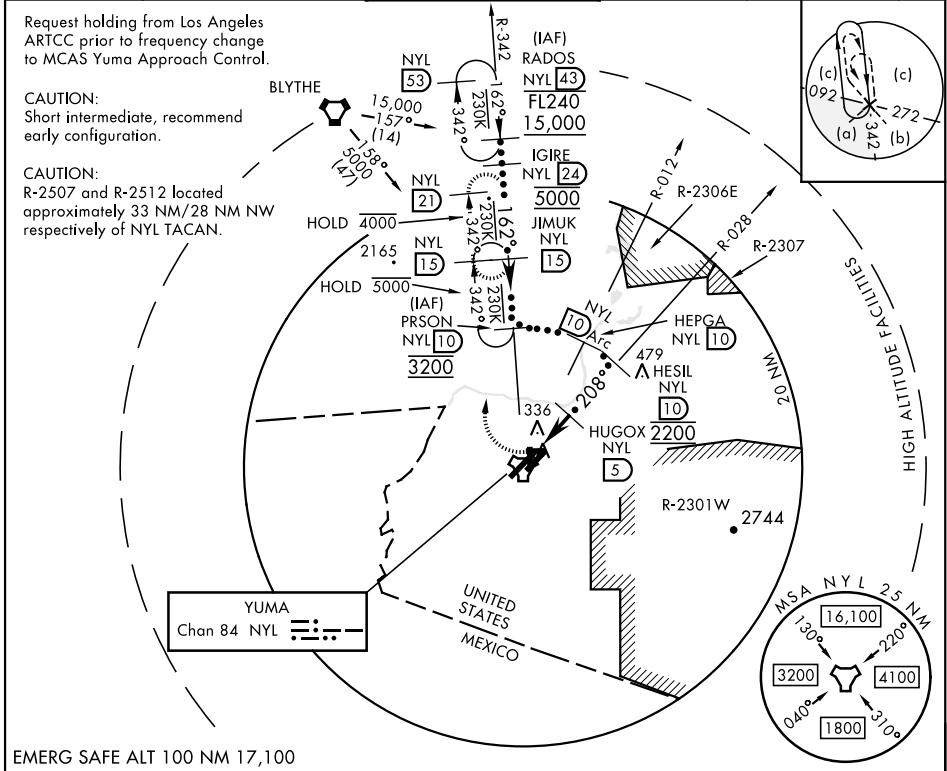
HI-TACAN Z RWY 21R

TACAN NYL Chan 84	APCH CRS 208°	Rwy ldg 13,300 TDZE 193 Arprt Elev 213	AL-511 [USN]	YUMA MCAS/YUMA INTL (KNYL)
-----------------------------	-------------------------	---	--------------	----------------------------

* When ALS inop, increase vis to 1½ miles.

 MISSED APPROACH: Climbing right turn to 4000 intercept NYL TACAN R-342 to JIMUK and hold, continue climb-in-hold to 4000.

ATIS★ 118.8 273.5	APP CON 124.7 371.975	TOWER★ 119.3 (CTAF) 0 377.075	GND CON 121.9 314.0	CLNC DEL 118.0 336.4	ASR/ PAR
-----------------------------	---------------------------------	---	-------------------------------	--------------------------------	-------------



EMERG SAFE ALT 100 NM 17,100

4000 NYL R-342 JIMUK NYL 15	RADOS R-342 43 FL240 15,000	ELEV 213	TDZE 193
TACAN HOBMA 1.3 HUGOX 5 HEPGA R-012 10 HESIL R-028 10 PRSON R-342 10 JIMUK 15 IGIRE 24 RADOS R-342 43 FL240 15,000	TCH 50 3.12°	3L-21R 13,300 x 200 3R-21L 9239 x 150 8-26 6146 x 150 17-35 5710 x 150	TWR REIL Rwy 3R-21L, 3L, 35 HIRL Rwys 3R-21L and 3L-21R HIRL Rwys 8-26 and 17-35
CATEGORY	C	D	E
S-21R*	640-7/8	447	(500-7/8)
CIRCLING	800-1½ 587 (600-1½)	800-2 587 (600-2)	

HI-TACAN Z RWY 21R

SW-4, 13 JUN 2024 to 11 JUL 2024

SW-4, 13 JUN 2024 to 11 JUL 2024