

YUMA, ARIZONA

# RNAV (GPS) RWY 21R

APCH CRS	Rwy Idg	13,300
213°	TDZE	193
	Arprt Elev	213

AL-511 (USN)

YUMA MCAS YUMA INTL (KNYL)

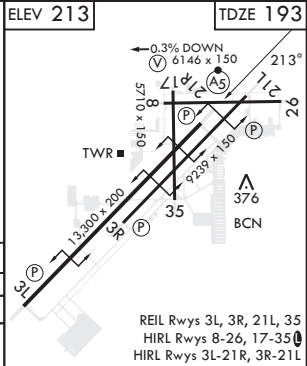
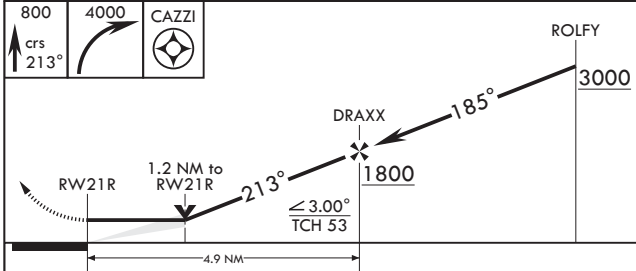
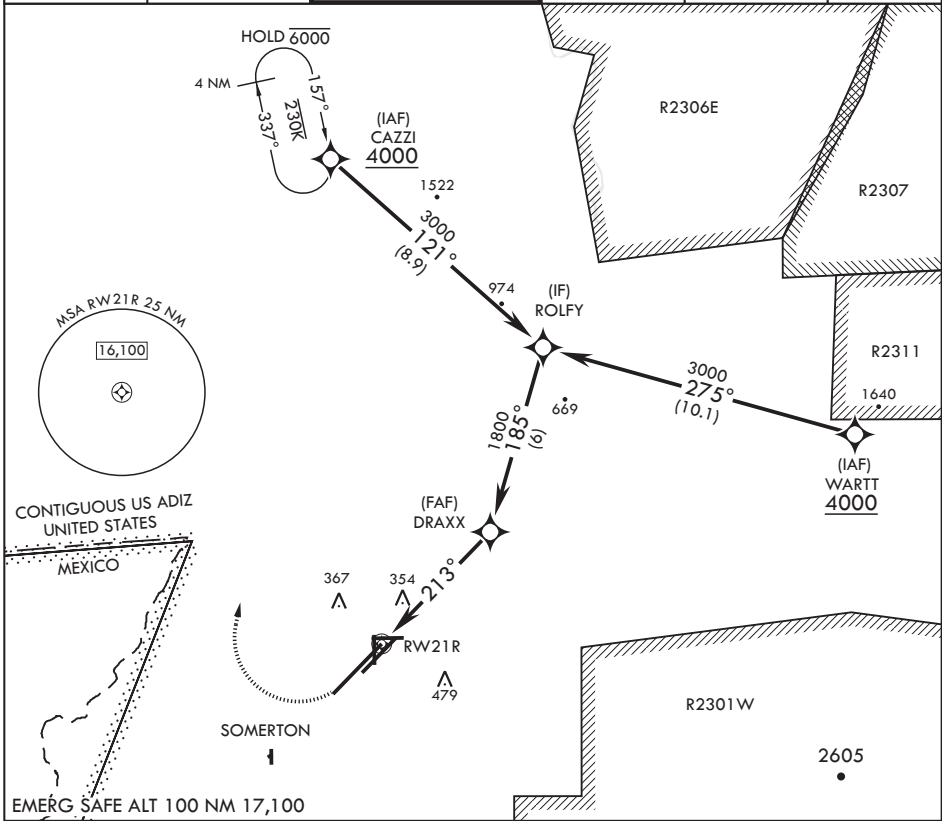
RNP APCH

MALSRL

MISSED APPROACH: Climb to 800 then, climbing right turn to 4000 direct CAZZI and hold. Continue climb in hold to 4000.

When ALS inop, increase CAT AB vis to 1 mile, CAT CD vis to 1 1/4 miles.

ATIS★	APP CON	TOWER★	GND CON	CLNC DEL	ASR/PAR
118.8 273.5	124.7 371.975	119.3 (CTAF) 0 377.075	121.9 314.0	118.0 336.4	



CATEGORY	A	B	C	D
LNAV MDA*	620-1/2 427 (500-1/2)	700-1 427 (500-3/4)	620-3/4 427 (500-3/4)	800-2 587 (600-2)
◻ CIRCLING	680-1 467 (500-1)	700-1 487 (500-1)	800-1 1/2 587 (600-1 1/2)	800-2 587 (600-2)

YUMA, ARIZONA

32°39'N - 114°36'W

YUMA MCAS YUMA INTL (KNYL)

Amdt 5 22APR21

# RNAV (GPS) RWY 21R

SW-4, 13 JUN 2024 to 11 JUL 2024

SW-4, 13 JUN 2024 to 11 JUL 2024