

YUMA, ARIZONA

23222

# VOR RWY 17

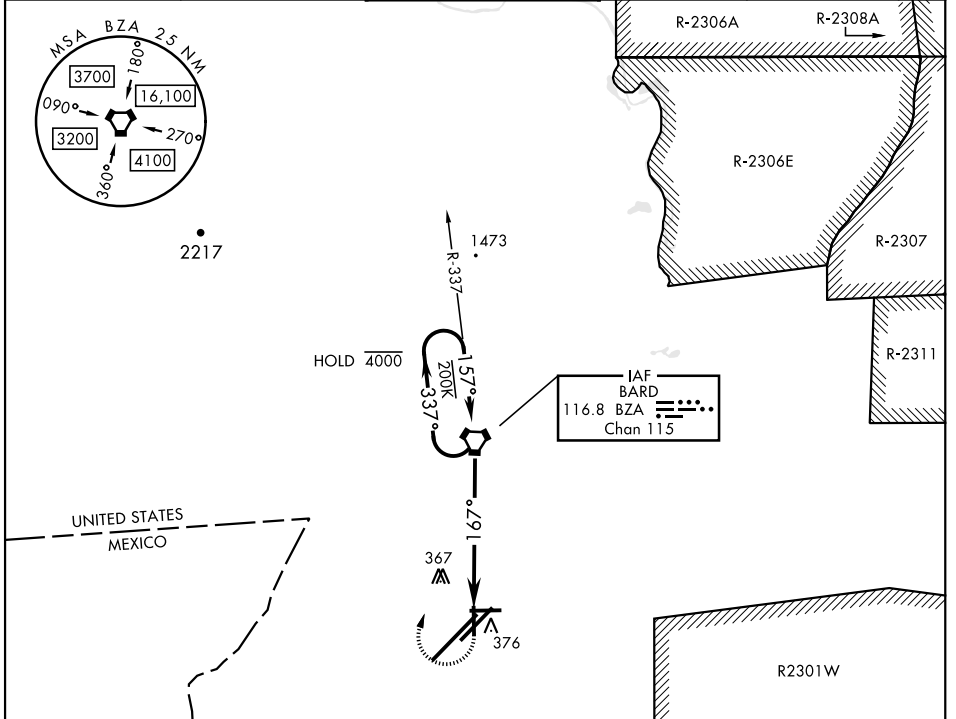
VORTAC BZA <b>116.8</b> Chan <b>115</b>	APCH CRS <b>167°</b>	Rwy Idg TDZE Arprt Elev <b>5710</b> <b>197</b> <b>213</b>
---	-------------------------	--

AL-511 [USN]

YUMA MCAS/YUMA INTL (KNYL)

MISSED APPROACH: Climb to 1100, then climbing right turn to 2500 direct BZA VORTAC and hold.

ATIS★ <b>118.8 273.5</b>	APP CON <b>124.7 371.975</b>	TOWER★ <b>119.3</b> (CTAF) <b>0 377.075</b>	GND CON <b>121.9 314.0</b>	CLNC DEL <b>118.0 336.4</b>	ASR/ PAR
-----------------------------	---------------------------------	--	-------------------------------	--------------------------------	-------------



SW-4, 13 JUN 2024 to 11 JUL 2024

SW-4, 13 JUN 2024 to 11 JUL 2024

EMERG SAFE ALT 100 NM 17,100		R-2301W		ELEV 213	TDZE 197
VORTAC		1100	2500	BZA	167°
2500 ← 337°		↑		3L-21R 13,300 x 200	
157° →		↻		3R-21L 9239 x 150	
2200		✱		8-26 6146 x 150	
3.08°		↘		17-35 5710 x 150	
TCH 40		↘		TWR ■	
6 NM		→		REIL Rwy 3L, 3R, 21L, 35	
CATEGORY		A	B	C	D
S-17	660-1	463 (500-1)	NA		
CIRCLING	680-1	700-1	NA		
	467 (500-1)	487 (500-1)			
FAF to MAP 6.0 NM					
Knots	60	90	120	150	180
Min:Sec	6:00	4:00	3:00	2:24	2:00

YUMA, ARIZONA  
Amdt 4 22APR21

32°39'N-114°36'W

YUMA MCAS/YUMA INTL (KNYL)

# VOR RWY 17