

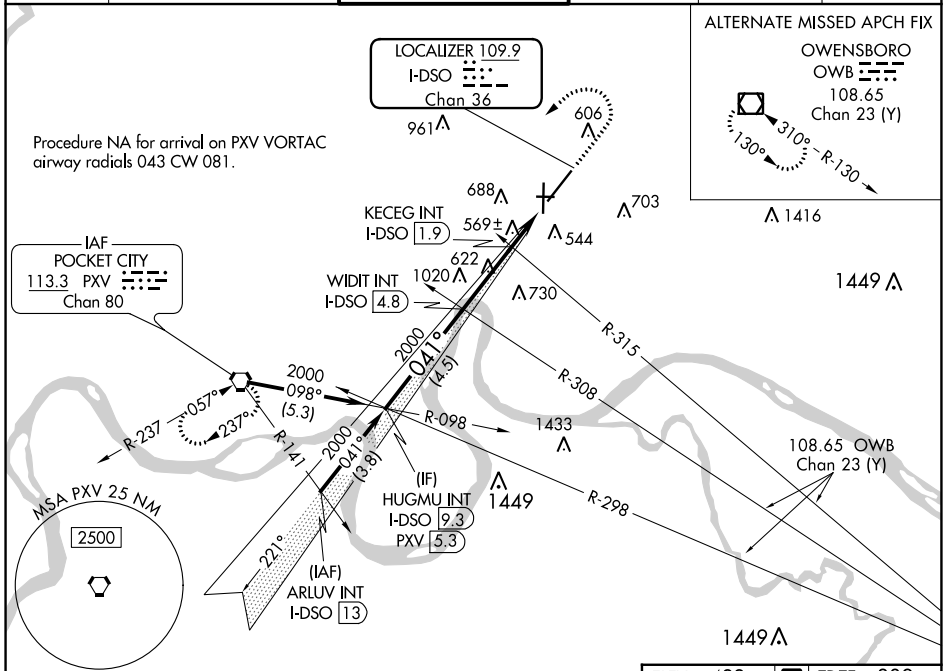
LOC/DME I-DSO <b>109.9</b> Chan <b>36</b>	APP CRS <b>041°</b>	Rwy Idg TDZE Apt Elev	<b>8021</b> <b>389</b> <b>422</b>
---	------------------------	-----------------------------	---

# ILS or LOC RWY 4

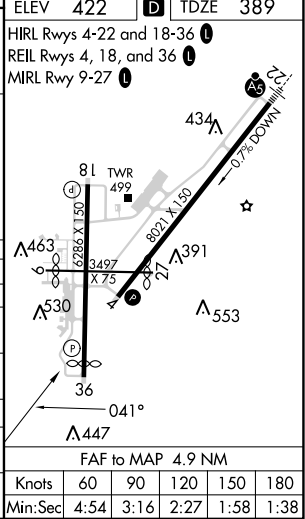
EVANSVILLE RGNL (EVV)

**ASR** Circling Rwy 9 NA at night. MISSED APPROACH: Climb to 1500 then climbing left turn to 2500 direct PXV VORTAC and hold.

ATIS <b>120.2</b>	EVANSVILLE APP CON ★ <b>124.025 290.9</b>	EVANSVILLE TOWER ★ <b>118.7 (CTAF) 257.8</b>	GND CON <b>121.9</b>	CLNC DEL <b>126.6</b>	UNICOM <b>122.95</b>
----------------------	--	---	-------------------------	--------------------------	-------------------------



	HUGMU INT I-DSO 9.3	WIDIT INT I-DSO 4.8	KECEG INT I-DSO 1.9	I-DSO DME ANTENNA
	2000	2000	2000	2000
	041°	041°	041°	041°
	4.5 NM	2.8 NM	0.9 NM	1.2 NM
	*LOC only 1500 2500 PXV			
	HIRL Rws 4-22 and 18-36 REIL Rws 4, 18, and 36 MIRL Rwy 9-27			
CATEGORY	A	B	C	D
S-ILS 4	589-3/4 200 (200-3/4)			
S-LOC 4	1180-1 791 (800-1)	1180-1 1/4 791 (800-1 1/4)	1180-2 1/2	791 (800-2 1/2)
CIRCLING	1180-1 758 (800-1)	1180-1 1/4 758 (800-1 1/4)	1180-2 1/2	758 (800-2 1/2)
KECEG FIX MINIMUMS (DUAL VOR RECEIVERS OR DME REQUIRED)				
S-LOC 4	820-1	431 (400-1)	820-1 1/4	431 (400-1 1/4)
CIRCLING	920-1 498 (500-1)	1040-1 618 (700-1)	1040-1 1/4 618 (700-1 1/4)	1040-2 618 (700-2)



EC-2, 13 JUN 2024 to 11 JUL 2024

EC-2, 13 JUN 2024 to 11 JUL 2024