

WAAS CH <b>50421</b> <b>W18A</b>	APP CRS <b>184°</b>	Rwy Idg TDZE Apt Elev	<b>5497</b> <b>396</b> <b>422</b>
--	------------------------	-----------------------------	---

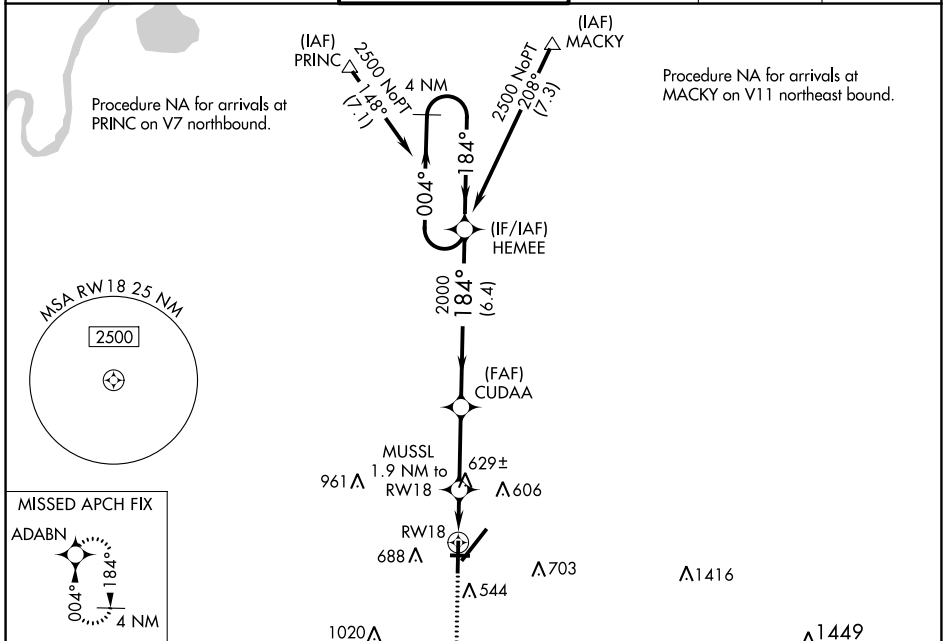
# RNAV (GPS) RWY 18

EVANSVILLE RGNL (E V V)

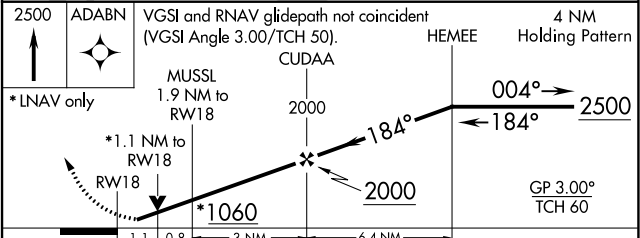
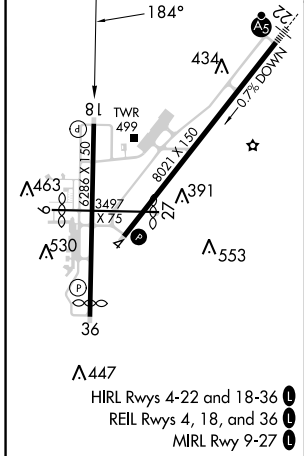
**ASR** For uncompensated Baro-VNAV systems, LNAV/VNAV NA below -15°C (5°F) or above 54°C (130°F). DME/DME RNP-0.3 NA. Circling Rwy 9 NA at night. Helicopter visibility reduction below ¾ SM NA.

**MISSED APPROACH:** Climb to 2500 direct ADABN and hold.

ATIS <b>120.2</b>	EVANSVILLE APP CON ★ <b>124.025 290.9</b>	EVANSVILLE TOWER ★ <b>118.7(CTAF) 257.8</b>	GND CON <b>121.9</b>	CLNC DEL <b>126.6</b>	UNICOM <b>122.95</b>
----------------------	--	--	-------------------------	--------------------------	-------------------------



ELEV 422	<b>D</b>	TDZE 396
----------	----------	----------



CATEGORY	A	B	C	D
LPV DA		596-¾	200 (200-¾)	
LNAV/VNAV DA		931-1¾	535 (600-1¾)	
LNAV MDA	880-1	484 (500-1)	880-1¾	484 (500-1¾)
<b>C</b> CIRCLING	920-1 498 (500-1)	1040-1 618 (700-1)	1040-1¾ 618 (700-1¾)	1040-2 618 (700-2)

EC-2, 13 JUN 2024 to 11 JUL 2024

EC-2, 13 JUN 2024 to 11 JUL 2024