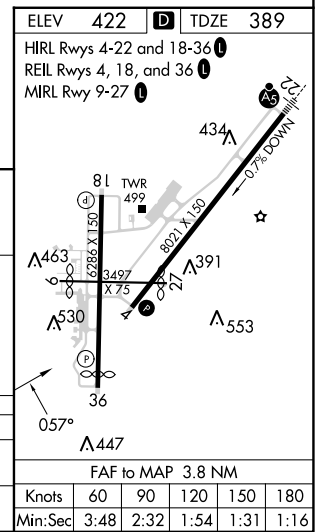
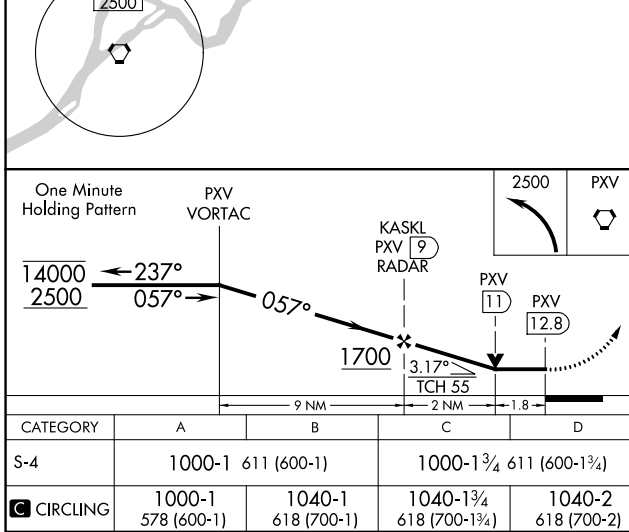
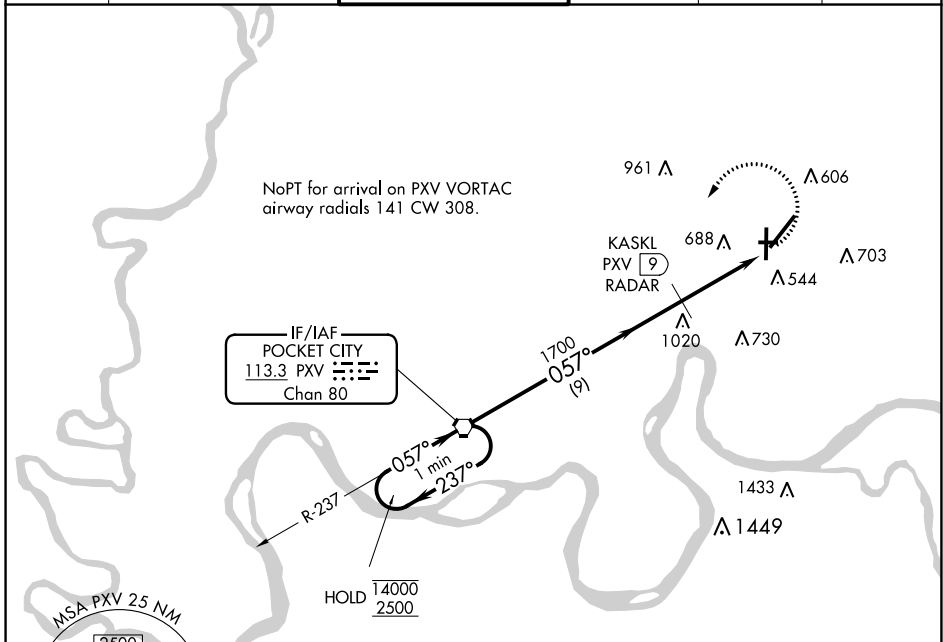


VORTAC PXV 113.3 Chan 80	APP CRS 057°	Rwy Idg TDZE Apt Elev 8021 389 422
--	------------------------	--

VOR RWY 4

EVANSVILLE RGNL (EVV)

DME or RADAR required.		MISSED APPROACH: Climbing left turn to 2500 direct PXV VORTAC and hold.			
▼ RWY 4 helicopter visibility reduction below 3/4 SM NA. ASR Circling Rwy 9 NA at night.					
ATIS 120.2	EVANSVILLE APP CON ★ 124.025 290.9	EVANSVILLE TOWER ★ 118.7 (CTAF) 257.8	GND CON 121.9	CLNC DEL 126.6	UNICOM 122.95



EVANSVILLE, INDIANA	38°02'N-87°32'W	EVANSVILLE RGNL (EVV)
Amdt 7A 13SEP18		VOR RWY 4

EC-2, 13 JUN 2024 to 11 JUL 2024

EC-2, 13 JUN 2024 to 11 JUL 2024