


LOC/DME I-GKK <b>109.1</b> Chan 28	APP CRS <b>054°</b>	Rwy Idg TDZE Apt Elev <b>10000</b> <b>384</b> <b>435</b>
--	------------------------	---

# ILS or LOC RWY 5L

RALEIGH-DURHAM INTL (RDU)

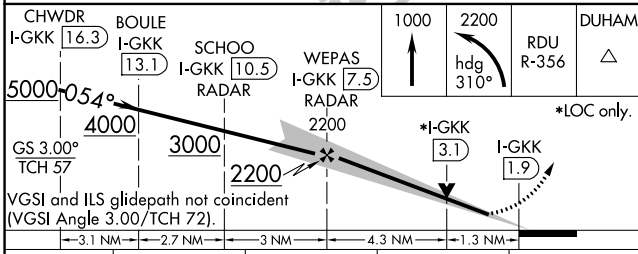
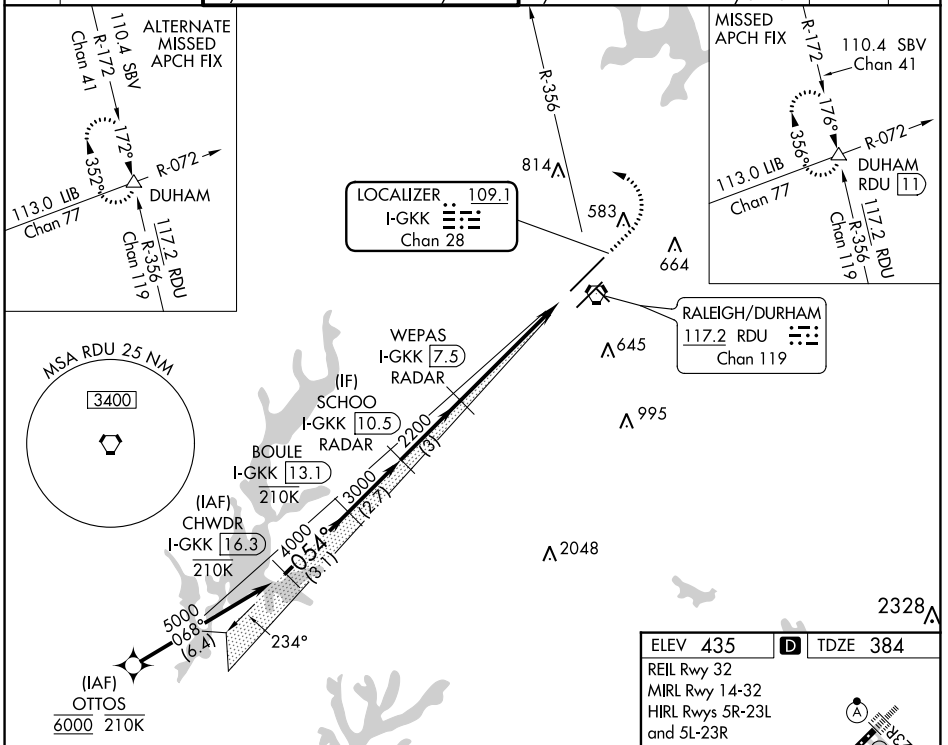
RNAV 1-DME/DME/IRU or GPS or RADAR required for procedure entry. DME or RADAR required for LOC only.

Simultaneous approach authorized.

MALSR 

MISSED APPROACH: Climb to 1000 then climbing left turn to 2200 on heading 310° and RDU VORTAC R-356 to DUHAM INT/RDU 11 DME and hold.

D-ATIS	RALEIGH APP CON	(EAST) RALEIGH TOWER (WEST)	(EAST) GND CON (WEST)	CLNC DEL	CPDLC
<b>123.8</b>	<b>127.675 307.9</b>	<b>127.45 257.8</b> Rwys 5R-23L and 14-32	<b>119.3 257.8</b> Rwy 5L-23R	<b>121.9 348.6</b> Rwys 5R-23L and 14-32	<b>121.7 348.6</b> Rwy 5L-23R



ELEV 435	TDZE 384
REIL Rwy 32	MIRL Rwy 14-32
HIRL Rwys 5R-23L and 5L-23R	TDZ/CL Rwys 23R, 23L and 5L
FAF to MAP 5.6 NM	
Knots	60 90 120 150 180
Min:Sec	5:36 3:44 2:48 2:14 1:52

SE-2, 13 JUN 2024 to 11 JUL 2024

SE-2, 13 JUN 2024 to 11 JUL 2024