

(LWOOD5.LWOOD) 21336

AL-516 (FAA)

RALEIGH-DURHAM INTL (RDU)  
RALEIGH/DURHAM, NORTH CAROLINA

# LWOOD FIVE DEPARTURE (RNAV)

D-ATIS  
123.8  
CLNC DEL  
120.1  
CPDLC  
GND CON  
121.9 348.6 (EAST)  
(Rwys 5R-23L, 14-32)  
121.7 348.6 (WEST)  
(Rwy 5L-23R)  
RALEIGH TOWER  
127.45 257.8 (EAST)  
(Rwys 5R-23L, 14-32)  
119.3 257.8 (WEST)  
(Rwy 5L-23R)  
RALEIGH DEP CON  
132.35 256.9

**TOP ALTITUDE:  
6000**

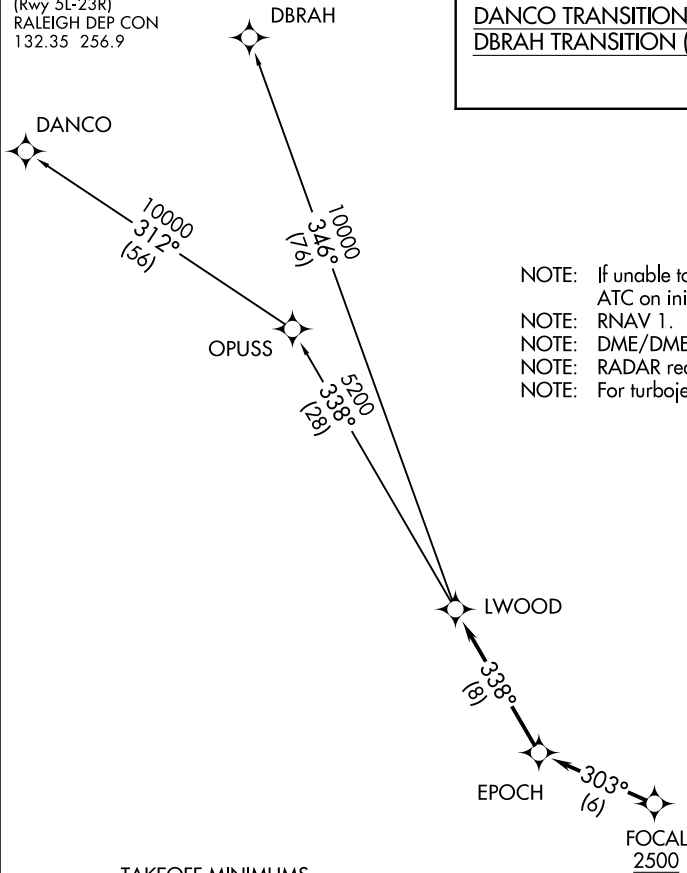
## DEPARTURE ROUTE DESCRIPTION

**TAKEOFF RUNWAYS 5L/R, 23L/R:** Climb on assigned heading for RADAR vectors to cross FOCAL at or above 2500, thence. . . .

. . . .on depicted route to LWOOD.  
Maintain 6000. Expect clearance to filed altitude within ten minutes after departure.

DANCO TRANSITION (LWOOD5.DANCO)  
DBRAH TRANSITION (LWOOD5.DBRAH)

- NOTE: If unable to accept climb rate, advise ATC on initial contact.  
NOTE: RNAV 1.  
NOTE: DME/DME/IRU or GPS required.  
NOTE: RADAR required.  
NOTE: For turbojet aircraft only.



### TAKEOFF MINIMUMS

Rwys 14, 32: NA - ATC.

Rwys 5L/R: Standard.

Rwy 23L: Standard with minimum climb of 250' per NM to 2300.

Rwy 23R: Standard with minimum climb of 240' per NM to 2100.



NOTE: Chart not to scale.

SE-2, 13 JUN 2024 to 11 JUL 2024

SE-2, 13 JUN 2024 to 11 JUL 2024

# LWOOD FIVE DEPARTURE (RNAV)

(LWOOD5.LWOOD) 02DEC21

RALEIGH/DURHAM, NORTH CAROLINA  
RALEIGH-DURHAM INTL (RDU)