

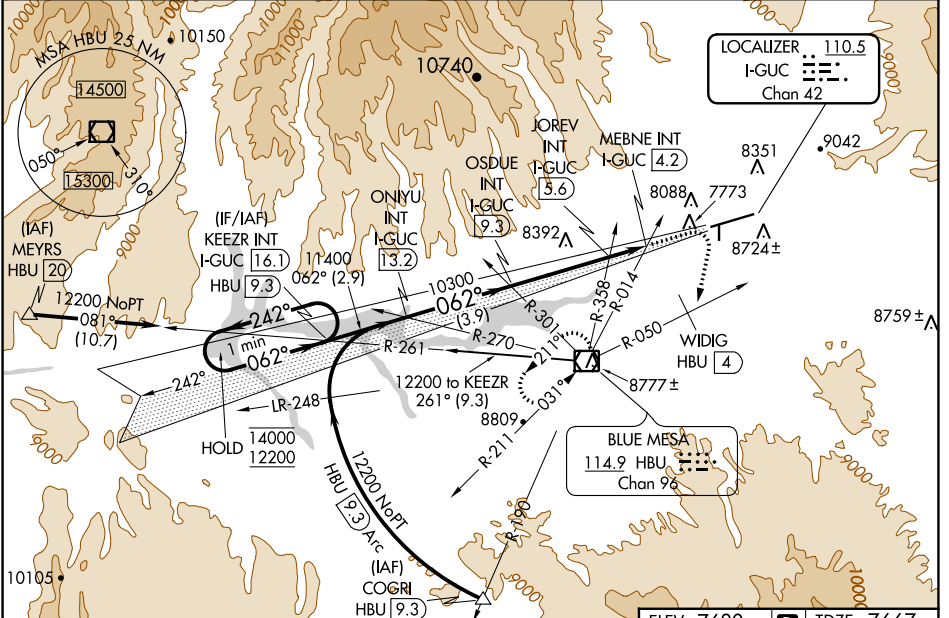
| | | |
|---|------------------------|--|
| LOC/DME I-GUC 110.5 Chan 42 | APP CRS 062° | Rwy Idg TDZE Apt Elev 9397 7667 7680 |
|---|------------------------|--|

ILS or LOC RWY 6

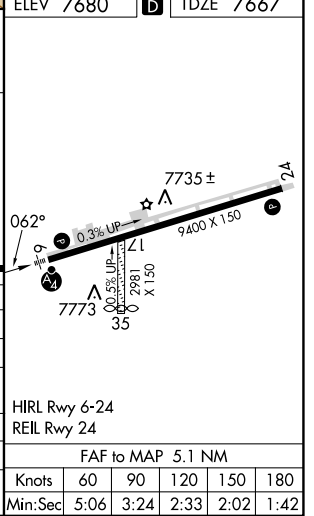
GUNNISON-CRESTED BUTTE RGNL (GUC)

| | |
|--|--|
| <p>DME required.</p> <p>▽ Rwy 6 helicopter visibility reduction below 3/4 SM NA. Inop table does not apply. Procedure NA when airport closed except by prior arrangement.</p> <p>⊗ -26°C</p> | <p>MALSF</p> <p>MISSED APPROACH: Climb to 10000 then climbing right turn to 12000 on heading 180° and HBU VOR/DME R-050 to WIDIG/HBU 4. DME continue on HBU VOR/DME R-050 to HBU VOR/DME and hold.</p> |
|--|--|

| | | |
|----------------------------|--------------------------------------|-------------------------------|
| AWOS-3PT 135.075 | DENVER CENTER 124.5 350.25 | UNICOM 122.7 (CTAF) |
|----------------------------|--------------------------------------|-------------------------------|



| | | | | |
|--|---|---|--|--------------------------|
| <p>One Minute Holding Pattern</p> <p>14000 ← 242°</p> <p>12200 062° →</p> <p>GS 3.20° TCH 49</p> | <p>KEZR INT I-GUC 16.1</p> <p>ONIYU INT I-GUC 13.2</p> <p>OSDUE INT I-GUC 9.3</p> <p>JOREV INT I-GUC 5.6</p> <p>MEBNE INT I-GUC 4.2</p> | <p>10000</p> <p>12000</p> <p>hdg 180°</p> | <p>HBU R-050</p> <p>WIDIG HBU 4</p> <p>HBU R-050</p> | <p>HBU</p> |
| | <p>2.9 NM</p> <p>3.9 NM</p> <p>3.7 NM</p> <p>1.4 NM</p> <p>2.4 NM</p> | <p>* LOC only</p> <p>*9020</p> | <p>10300</p> | <p>10300</p> |
| CATEGORY | A | B | C | D |
| S-ILS 6 | 8590-3 923 (1000-3) | | | NA |
| S-LOC 6 | 9020-3 1353 (1400-3) | | | |
| CIRCLING | 9260-3 | 1580 (1600-3) | 9540-3 1860 (1900-3) | 10040-3 2360 (2400-3) |
| JOREV FIX MINIMUMS | | | | |
| S-LOC 6 | 8640-3 973 (1000-3) | | | |
| CIRCLING | 9260-3 | 1580 (1600-3) | 9540-3 1860 (1900-3) | 10040-3 2360 (2400-3) |



SW-1, 13 JUN 2024 to 11 JUL 2024

SW-1, 13 JUN 2024 to 11 JUL 2024

| | |
|-------------------|--------------------------|
| HIRL Rwy 6-24 | REIL Rwy 24 |
| FAF to MAP 5.1 NM | |
| Knots | 60 90 120 150 180 |
| Min:Sec | 5:06 3:24 2:33 2:02 1:42 |