

VOR/DME HBU 114.9 Chan 96	APP CRS 031°	Rwy Ldg TDZE Apt Elev 7680	N/A N/A 7680
---	------------------------	---	---------------------------

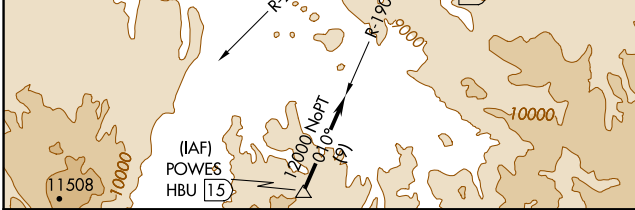
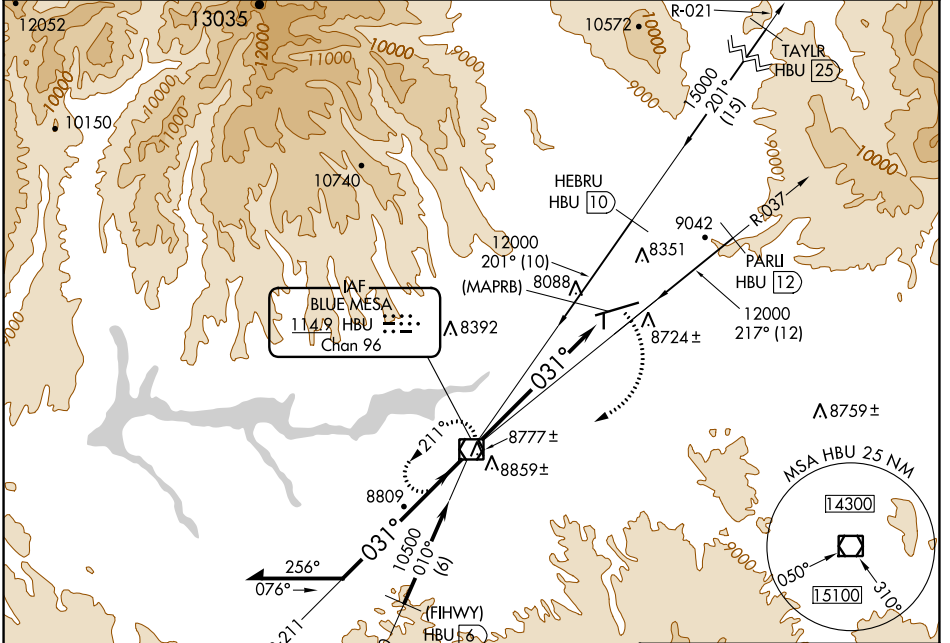
VOR or GPS-A

GUNNISON-CRESTED BUTTE RGNL (GUC)

Procedure NA when airport closed except by prior arrangement. Obtain local altimeter setting on CTAF; when not received, procedure NA.

MISSED APPROACH: Climbing right turn to 12000 direct HBU VOR/DME and hold.

AWOS-3PT 135.075	DENVER CENTER 124.5 350.25	UNICOM 122.7 (CTAF)
----------------------------	--------------------------------------	-------------------------------



ELEV 7680 **D**

031° 7 NM from FAF

HIRL Rwy 6-24
REIL Rwy 24

CATEGORY	FAF to MAP 7 NM				
	A	B	C	D	E
CIRCLING	9260-2 1580 (1600-2)	9340-2 1660 (1700-2)	9540-3 1860 (1900-3)	10040-3 2360 (2400-3)	
	Knots: 60, 90, 120, 150, 180	Min:Sec: 7:00, 4:40, 3:30, 2:48, 2:20			

SW-1, 13 JUN 2024 to 11 JUL 2024

SW-1, 13 JUN 2024 to 11 JUL 2024