

LOC/DME I-ACV <b>109.5</b> Chan <b>32</b>	APP CRS <b>316°</b>	Rwy Idg TDZE Apt Elev	<b>5846</b> <b>221</b> <b>222</b>
---	------------------------	-----------------------------	---

# ILS or LOC RWY 32

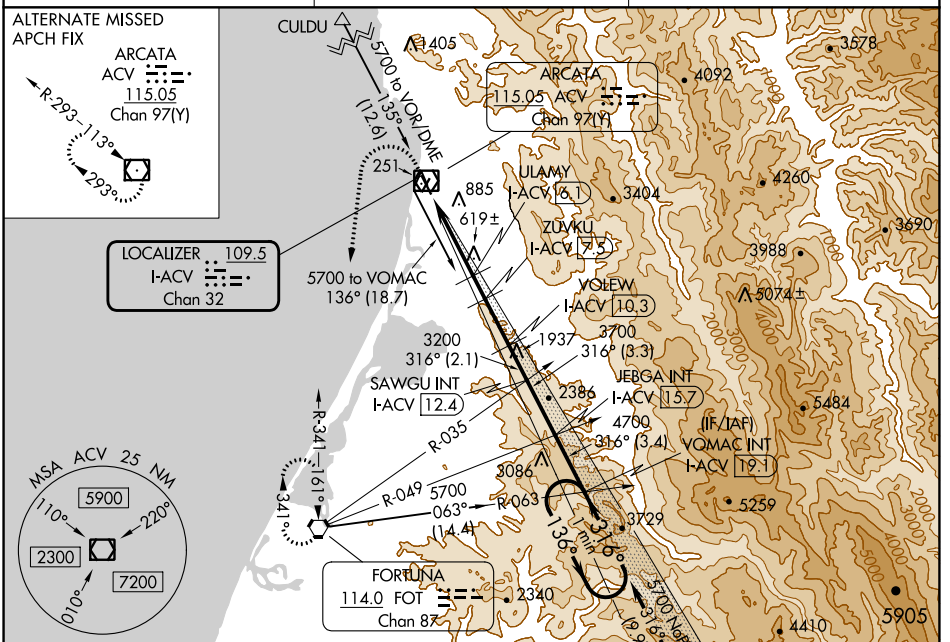
CALIFORNIA REDWOOD COAST-HUMBOLDT COUNTY (ACV)

**NA** Circling NA northeast of Rwy 14-32. DME required.

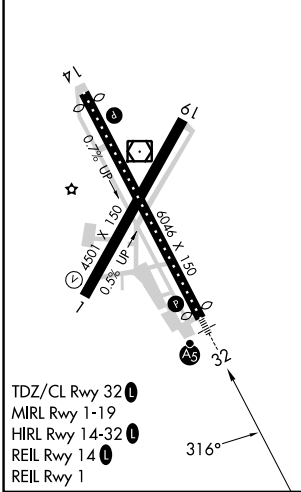
**MALSR**  
AS

**MISSED APPROACH:** Climb to 800 then climbing left turn to 3000 direct FOT VORTAC and hold.

<b>ASOS</b> <b>118.525</b>	<b>SEATTLE CENTER</b> <b>124.85 306.3</b>	<b>UNICOM</b> <b>123.0 (CTAF)</b>
-------------------------------	--	--------------------------------------



ELEV 222	<b>D</b>	TDZE 221
----------	----------	----------



800 3000 FOT

Use I-ACV DME when on the localizer course.  
VGSI and ILS glidepath not coincident (VGSI Angle 3.00/TCH 43).

VOMAC I-ACV 19.1 One Minute Holding Pattern

\*LOC only

I-ACV 1.1 \*I-ACV 3 3200 1860\* 2320\* 3200 3700 4700 136° 316° 5700

ULAMY I-ACV 6.1 VOLEW I-ACV 10.3 SAWGU I-ACV 12.4 JEBGA I-ACV 15.7

ZUVKU I-ACV 7.5

GS 3.00° TCH 47

CATEGORY	A	B	C	D
S-ILS 32	441/18 220 (300-1/2)			
S-LOC 32	880/24	659 (700-1/2)	880-1 3/8 659 (700-1 3/8)	
<b>C</b> CIRCLING	880-1	658 (700-1)	880-1 7/8 658 (700-1 7/8)	880-2 658 (700-2)

SW-2, 13 JUN 2024 to 11 JUL 2024

SW-2, 13 JUN 2024 to 11 JUL 2024