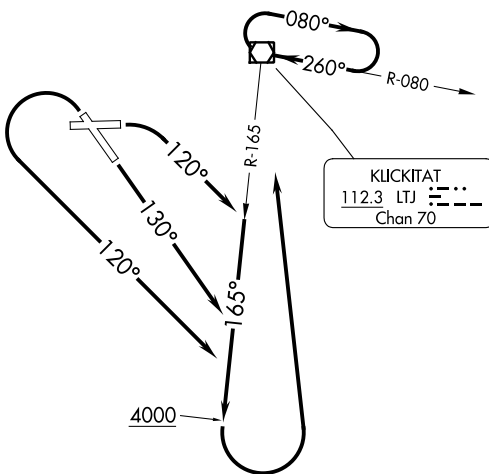


DALLES ONE DEPARTURE (OBSTACLE)

AL-530 (FAA)

THE DALLES, OREGON

ASOS
135.175
SEATTLE CENTER
119.65 257.6



TAKEOFF MINIMUMS

Rwy 25: NA - Terrain.

Rwy 7: Standard with minimum climb of 490' per NM to 3000.

Rwy 13: Standard with minimum climb of 650' per NM to 1800 or 900-2¾ with minimum climb of 415' per NM to 3000.

Rwy 31: Standard with minimum climb of 620' per NM to 3000.

TAKEOFF OBSTACLE NOTES

Rwy 7: Terrain 83' from DER, 249' right of centerline, 248' MSL.

Rwy 13: Fence 136' from DER, 316' right of centerline, up to 249' MSL.

Rising terrain beginning 1.2 NM from DER, left and right of centerline, up to 836' MSL.

Buildings beginning 1.3 NM from DER, 1069' right of centerline, up to 663' MSL.

Trees beginning 1.5 NM from DER, 833' right of centerline, up to 100' AGL/1059' MSL.

Tower 2.2 NM from DER, 462' right of centerline, 210' AGL/810' MSL.

Trees beginning 3 NM from DER, left and right of centerline, up to 100' AGL/1220' MSL.

Rwy 31: Trees beginning 86' from DER, 418' left of centerline, up to 40' AGL/247' MSL.

Trees beginning 714' from DER, 120' right of centerline, up to 45' AGL/256' MSL.

Trees beginning 1004' from DER, 354' right of centerline, up to 80' AGL/290' MSL.

NOTE: Chart not to scale.

DEPARTURE ROUTE DESCRIPTION

TAKEOFF RUNWAY 7: Climbing right turn heading 120° to intercept LTJ VOR/DME R-165, then climb on LTJ VOR/DME R-165 southbound to 4000, thence. . . .

TAKEOFF RUNWAY 13: Climb heading 130° to intercept LTJ VOR/DME R-165, then climb on LTJ VOR/DME R-165 southbound to 4000, thence. . . .

TAKEOFF RUNWAY 31: Climbing left turn heading 120° to intercept LTJ VOR/DME R-165, then climb on LTJ VOR/DME R-165 southbound to 4000, thence. . . .

. . . .Climbing left turn direct LTJ VOR/DME. Continue climb-in-hold, hold east, LTJ VOR/DME, RT, 260° inbound to cross LTJ VOR/DME at or above MEA/MCA for route of flight.

NW-1, 13 JUN 2024 to 11 JUL 2024

NW-1, 13 JUN 2024 to 11 JUL 2024