

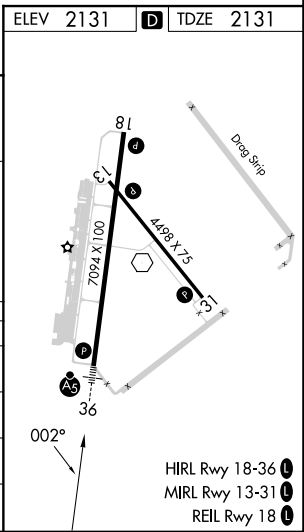
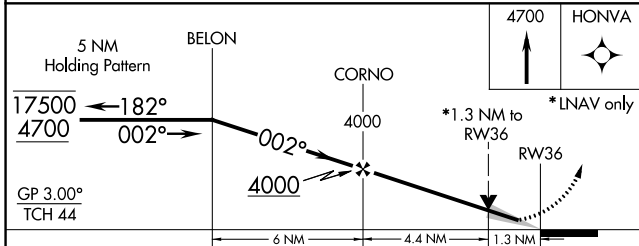
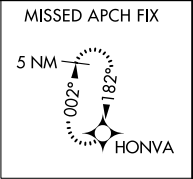
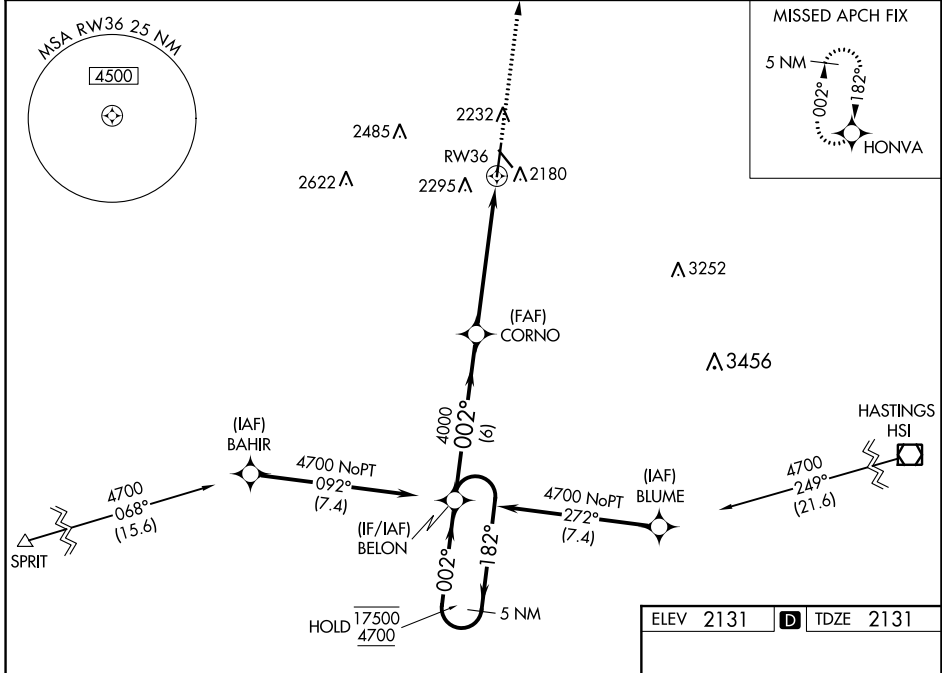
WAAS CH 90113 W36A	APP CRS 002°	Rwy Idg TDZE Apt Elev	7094 2131 2131
----------------------------------------	------------------------	-----------------------------	-------------------------------------------

RNAV (GPS) RWY 36

KEARNEY RGNL (E.A.R.)

RNP APCH.	MALSR 	MISSED APPROACH: Climb to 4700 direct HONVA and hold.
<p> For uncompensated Baro-VNAV systems, LNAV/VNAV NA below -23°C or above 54°C. For inop ALS, increase LNAV/VNAV all Cats visibility to ½ SM.</p>		

AWOS-3PT 123.875	MINNEAPOLIS CENTER 119.4 278.8	UNICOM 123.0 (CTAF)
----------------------------	------------------------------------------	-------------------------------



CATEGORY	A	B	C	D
LPV DA		2331-½	200 (200-½)	
LNAV/VNAV DA		2419-½	288 (300-½)	
LNAV MDA	2580-½	449 (500-½)	2580-⅞	449 (500-⅞)
CIRCLING	2600-1	469 (500-1)	2640-1½ 509 (600-1½)	2840-2¼ 709 (800-2¼)

NC-2, 13 JUN 2024 to 11 JUL 2024

NC-2, 13 JUN 2024 to 11 JUL 2024