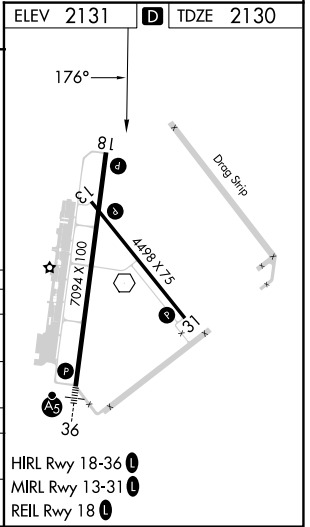
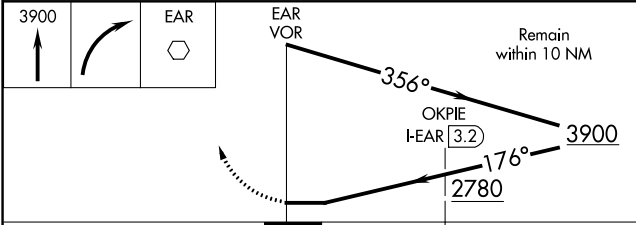
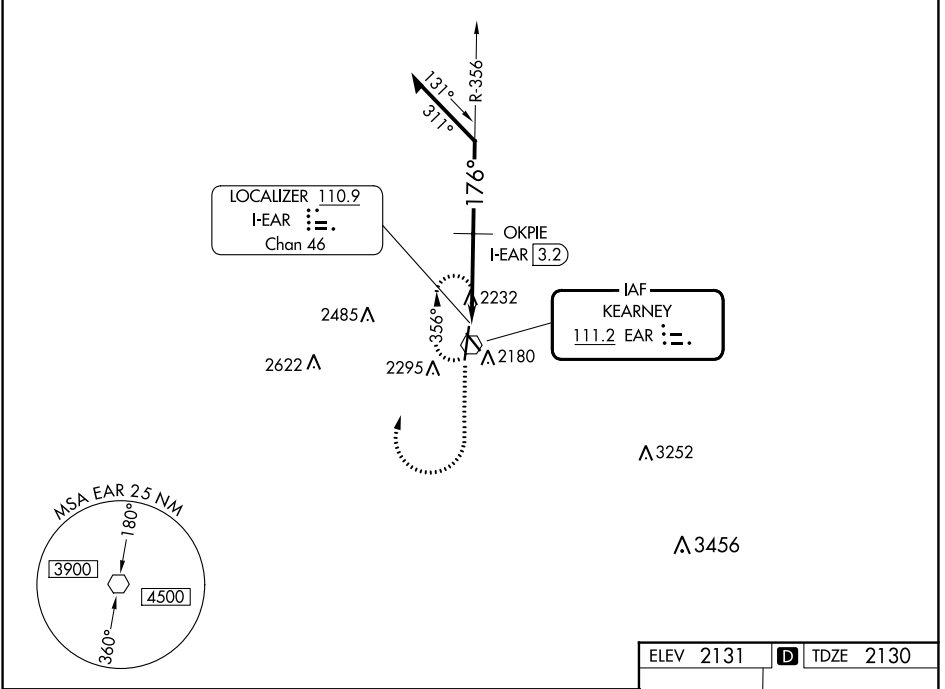


VOR EAR <b>111.2</b>	APP CRS <b>176°</b>	Rwy Idg TDZE Apt Elev	<b>7094</b> <b>2130</b> <b>2131</b>
-------------------------	------------------------	-----------------------------	---

**VOR RWY 18**  
KEARNEY RGNL (E.A.R.)

**⚠** MISSED APPROACH: Climb to 3900 then right turn direct EAR VOR and hold.

AWOS-3PT <b>123.875</b>	MINNEAPOLIS CENTER <b>119.4 278.8</b>	UNICOM <b>123.0 (CTAF)</b>
----------------------------	--	-------------------------------



CATEGORY	A	B	C	D
S-18	2780-1	650 (700-1)	2780-1¾ 650 (700-1¾)	2780-1½ 650 (700-1½)
<b>C</b> CIRCLING	2780-1	649 (700-1)	2780-1¾ 649 (700-1¾)	2840-2¼ 709 (800-2¼)
OKPIE FIX MINIMUMS				
S-18	2660-1	530 (600-1)	2660-1½	530 (600-1½)
<b>C</b> CIRCLING	2660-1	529 (600-1)	2660-1½ 529 (600-1½)	2840-2¼ 709 (800-2¼)

NC-2, 13 JUN 2024 to 11 JUL 2024

NC-2, 13 JUN 2024 to 11 JUL 2024