

HI-ILS or LOC Z RWY 31

LOC I-OFF 109.5	APCH CRS 307°	Rwy ldg 10,612 TDZE 991 Arprt Elev 1048	[USAF]	OFFUTT AFB (KOFF)
---------------------------	-------------------------	--	--------	-------------------

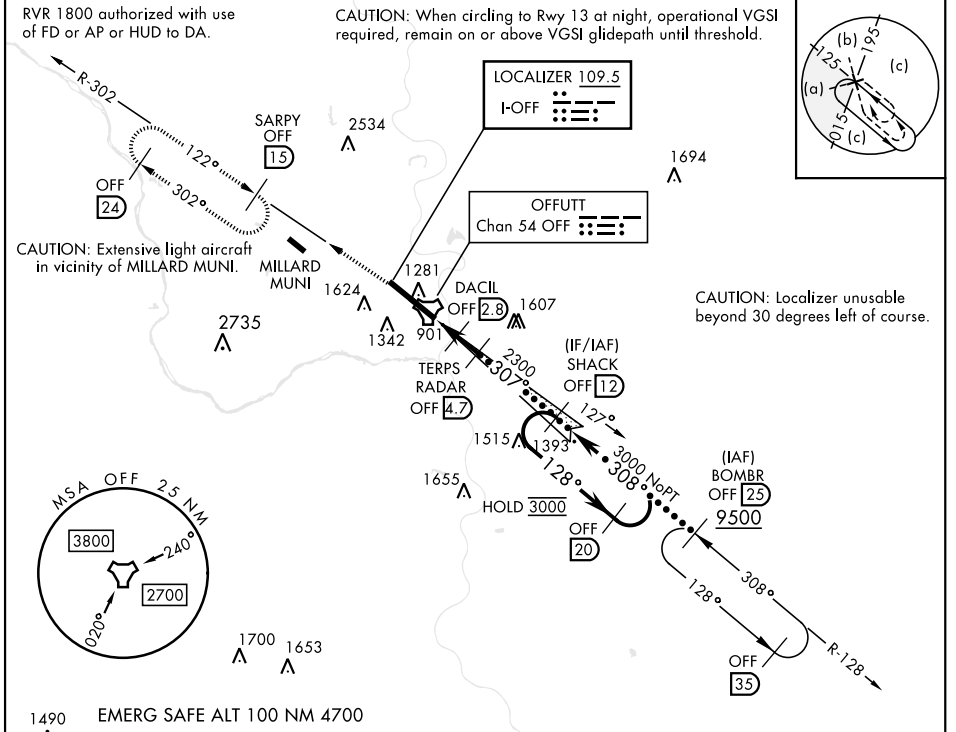
RADAR or DME required

▼ * When ALS inop, increase CAT CDE RVR to 40 and vis to ¾ mile.
 ** When ALS inop, increase CAT CDE RVR to 55 and vis to 1 mile.
 *** Circling not authorized N of Rwy 13-31.

ALS-F1 (A1)

MISSED APPROACH: Climb to 3000 via OFF TACAN R-302 to SARPY and hold.

ATIS 126.025 273.5	OMAHA APP CON 124.5 263.0 (E) 120.1 354.05 (W)	TOWER 123.7 279.625	GND CON 121.7 289.4
------------------------------	--	-------------------------------	-------------------------------



3000 OFF R-302	SARPY OFF (15)	SHACK (12) 20		
TACAN		CULUX (0.9)	DACIL (2.8)	TERPS RADAR (4.7)
1720		3000		
0.5 1.9 NM		GS 2.80° TCH 58		
CATEGORY	C	D	E	
S-ILS 31*	1192/24	200	(200-½)	
S-LOC 31**	1360/35	368	(400-¾)	
CIRCLING ***	1660-1¾ 612 (700-1¾)	1940-3	892	(900-3)

ELEV 1048	TDZE 991
Rwy 13 ldg 10,695' Rwy 31 ldg 10,612'	
TWR	
11,703 x 130	
-0.7% UP	
307°	
HIRL Rwy 13-31 Rwy 13-31 ALS nstd	
FAF to MAP 3.8 NM	
Knots	120 140 160 180 200
Min:Sec	1:54 1:38 1:26 1:16 1:08

HI-ILS or LOC Z RWY 31

NC-2, 13 JUN 2024 to 11 JUL 2024

NC-2, 13 JUN 2024 to 11 JUL 2024