

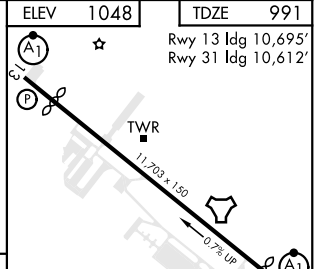
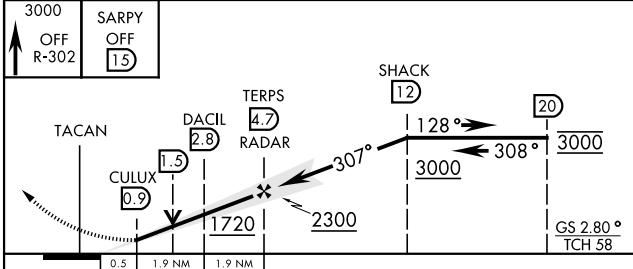
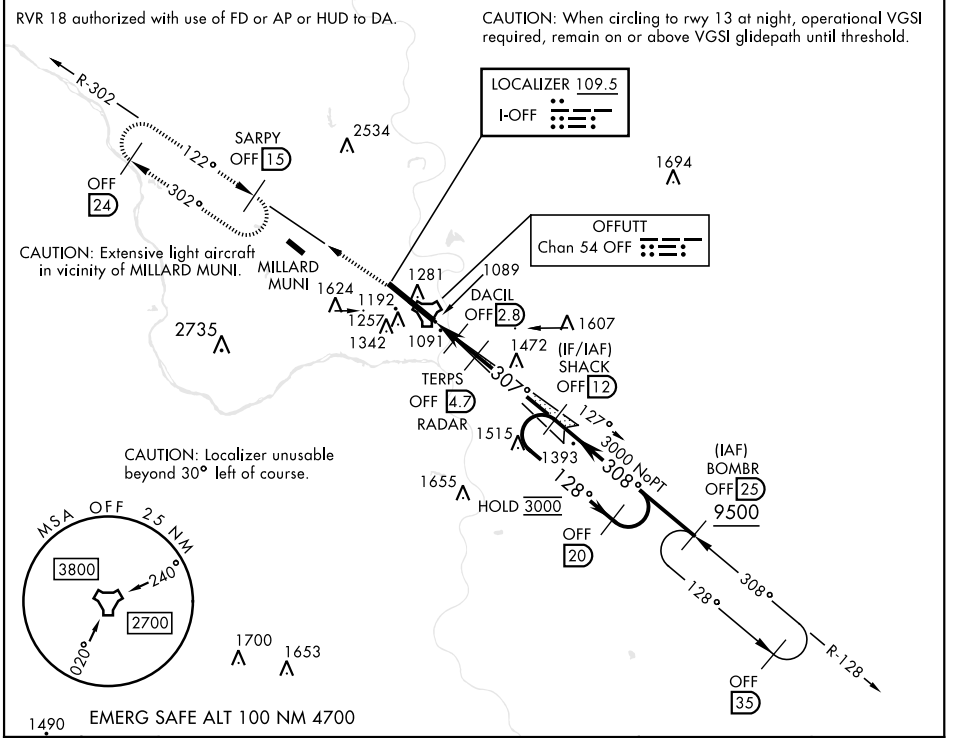
OMAHA, NEBRASKA

ILS or LOC Y RWY 31

LOC I-OFF 109.5	APCH CRS 307°	Rwy Ildg 10,612 TDZE 991 Arprt Elev 1048	[USAF]	OFFUTT AFB (KOFF)
---------------------------	-------------------------	---	--------	-------------------

RADAR or DME required.	ALSF-1 	MISSED APPROACH: Climb to 3000 via OFF TACAN R-302 to SARPY and hold.
------------------------	------------	---

ATIS 126.025 273.5	OMAHA APP CON 120.1 354.05 (W) 124.5 263.0 (E)	TOWER 123.7 279.625	GND CON 121.7 289.4
------------------------------	--	-------------------------------	-------------------------------



CATEGORY	A	B	C	D	E	HIRL Rwy 13-31 Rwy 13-31 ALS nstd	FAF to MAP 3.8 NM
S-ILS 31 *		1192/24	200	(200-½)			
S-LOC 31 **	1360/24	368 (400-½)	1360/35	368 (400-¾)		Knots	60 90 120 150 180
CIRCLING ***	1500-1	1560-1	1660-1¾	1940-3	892 (900-3)	Min:Sec	3:48 2:32 1:54 1:31 1:16
	452 (500-1)	512 (600-1)	612 (700-1¾)				

OMAHA, NEBRASKA 41°07'N-95°54'W OFFUTT AFB (KOFF)

Amdt 1 22FEB24

ILS or LOC Y RWY 31

NC-2, 13 JUN 2024 to 11 JUL 2024

NC-2, 13 JUN 2024 to 11 JUL 2024