

OMAHA, NEBRASKA

# RNAV (GPS) RWY 13

WAAS CH 91358 W13A	APCH CRS 127°	Rwy ldg 10,695
		TDZE 1048
		Arprt Elev 1048

-(USAF)

OFFUTT AFB (KOFF)

RNP APCH-GPS

ALSIF-1

MISSED APPROACH: Climb to 3000 direct WONSI, track 127° to SLPRS and hold.

▲ \* When ALS inop, increase vis to 1 1/4 miles.  
 \*\* When ALS inop, increase CAT AB RVR to 55, vis to 1 mile; CAT CDE vis to 1 1/2 miles.

ATIS <b>126.025 273.5</b>	OMAHA APP CON/DEP CON <b>120.1 354.05 W</b> <b>124.5 263.0 E</b>	TOWER <b>123.7 279.625</b>	GND CON <b>121.7 289.4</b>
------------------------------	--	-------------------------------	-------------------------------

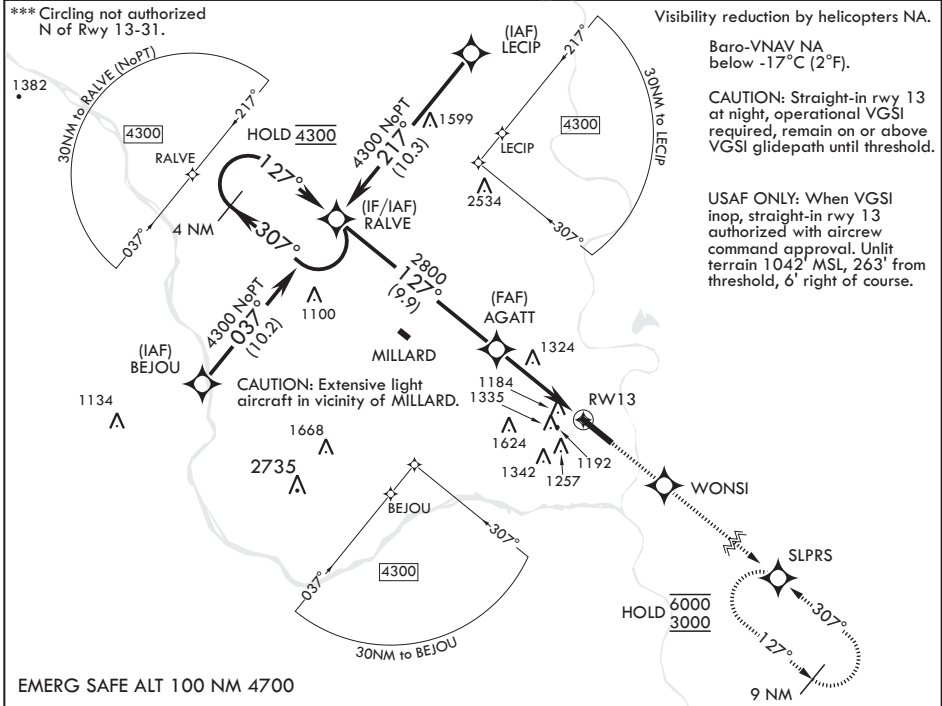
\*\*\* Circling not authorized N of Rwy 13-31.

Visibility reduction by helicopters NA.

Baro-VNAV NA below -17°C (2°F).

CAUTION: Straight-in rwy 13 at night, operational VGSI required, remain on or above VGSI glidepath until threshold.

USAF ONLY: When VGSI inop, straight-in rwy 13 authorized with aircrew command approval. Unlit terrain 1042' MSL, 263' from threshold, 6' right of course.



EMERG SAFE ALT 100 NM 4700

4 NM Holding Pattern	3000	WONSI	tr 127°	SLPRS	ELEV 1048	TDZE 1048
4300 ← 307°	↑	◆	⊙	⊙	Rwy 13 ldg 10,695' Rwy 31 ldg 10,612'	
4300 → 127°	VGSI and RNAV glidepath not coincident (VGSI Angle 3.00/TCH 55).					
GP 3.00° TCH 51						
CATEGORY	A	B	C	D	E	
LPV DA	1298/50		250	(300-1)		
LNAV/VNAV DA*	1479/50		431	(500-1)		
LNAV MDA**	1580/50 532 (600-1)		1580/55	532 (600-1)		
☐ CIRCLING***	1580-1 532 (600-1)		1660-1 612 (700-1 3/4)	1940-3 892 (900-3)		
HIRL all Rwys Rwy 13-31 ALS nstd						

OMAHA, NEBRASKA

41°07'N - 95°55'W

OFFUTT AFB (KOFF)

Amdt 1 22FEB24

# RNAV (GPS) RWY 13

NC-2, 13 JUN 2024 to 11 JUL 2024

NC-2, 13 JUN 2024 to 11 JUL 2024