

# TACAN Y RWY 13

TACAN OFF Chan <b>54</b>	APCH CRS <b>122°</b>	Rwy Ldg <b>10,695</b> TDZE <b>1048</b> Arprt Elev <b>1048</b>
-----------------------------	-------------------------	---

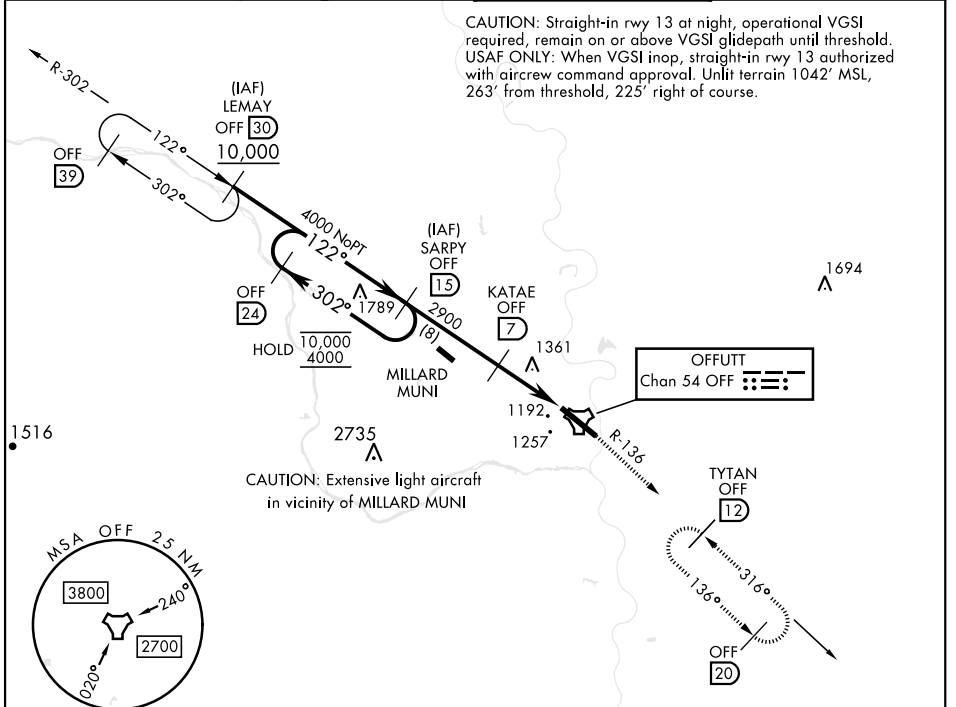
[USAF]

OFFUTT AFB (KOFF)

<p>▼ * When ALS inop, increase CAT AB RVR to 55, vis to 1 mile, CAT CDE vis to 1½ miles. ** Circling not authorized N of Rwy 13-31.</p>	<p>ALS F-1 (A1)</p>	<p>MISSED APPROACH: Climb to 3000 via OFF TACAN R-136 to TYTAN and hold.</p>
---	-------------------------	--

<p>ATIS <b>126.025 273.5</b></p>	<p>OMAHA APP CON <b>120.1 354.05 (W)</b> <b>124.5 263.0 (E)</b></p>	<p>TOWER <b>123.7 279.625</b></p>	<p>GND CON <b>121.7 289.4</b></p>
--------------------------------------	---	---------------------------------------	---------------------------------------

CAUTION: Straight-in rwy 13 at night, operational VGSI required, remain on or above VGSI glidepath until threshold.  
USAF ONLY: When VGSI inop, straight-in rwy 13 authorized with aircrew command approval. Unlit terrain 1042' MSL, 263' from threshold, 225' right of course.



CAUTION: Extensive light aircraft in vicinity of MILLARD MUNI

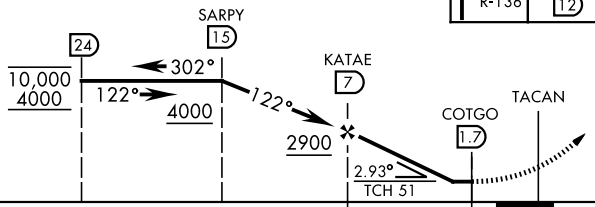
NC-2, 13 JUN 2024 to 11 JUL 2024

NC-2, 13 JUN 2024 to 11 JUL 2024

EMERG SAFE ALT 100 NM 4700

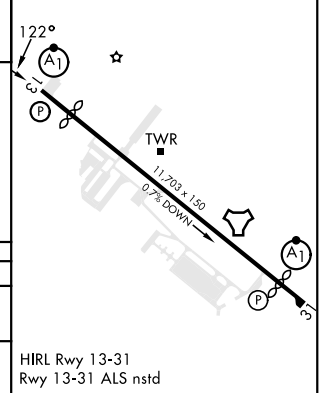
VGSI and descent angles not coincident (VGSI Angle 3.00/TCH 55).

3000	TYTAN OFF (12)
OFF R-136	



ELEV 1048	TDZE 1048
-----------	-----------

Rwy 13 Ldg 10,695'  
Rwy 31 Ldg 10,612'



CATEGORY	A	B	C	D	E
S-13 *	1620/50	572 (600-1)	1620-1¼	572 (600-1¼)	
<b>C</b> CIRCLING **	1620-1	572 (600-1)	1660-1¾ 612 (700-1¾)	1940-3	892 (900-3)

HIRL Rwy 13-31  
Rwy 13-31 ALS nstd

# TACAN Y RWY 13