

TACAN Y RWY 31

TACAN OFF Chan 54	APCH CRS 316°	Rwy ldg 10,612 TDZE 991 Arprt Elev 1048
-----------------------------	-------------------------	--

[USAF]

OFFUTT AFB (KOFF)

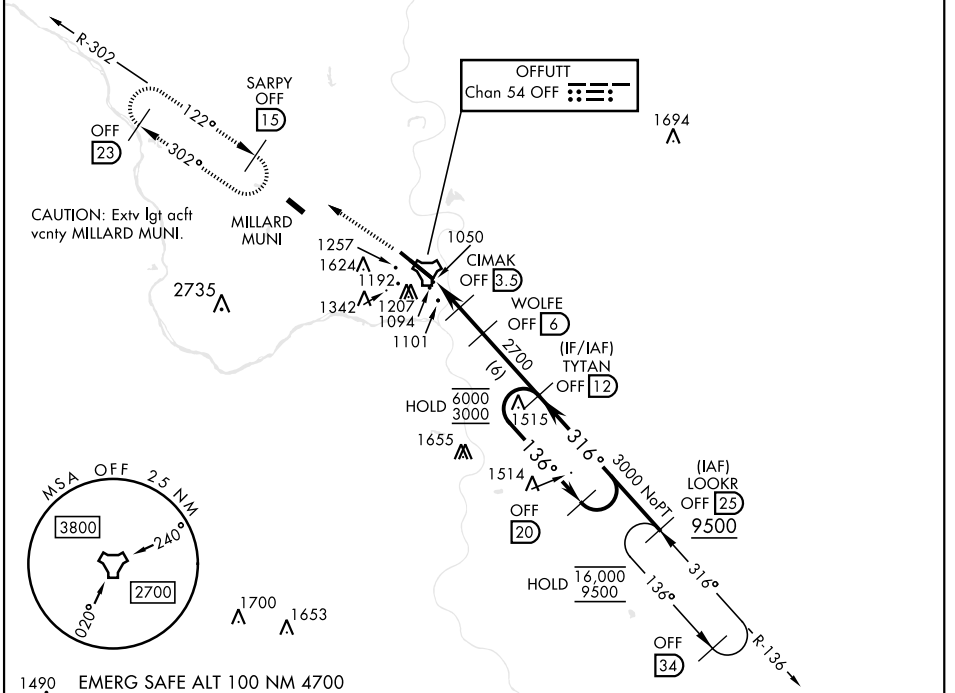
V * When ALS inop, increase RVR to 55, vis to 1 mile.
 ** Circling not authorized N of Rwy 13-31.



MISSED APPROACH: Climb to 3000 via
 OFF TACAN R-302 to SARPY and hold.

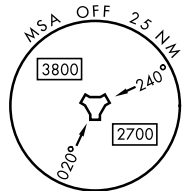
ATIS 126.025 273.5	OMAHA APP CON 120.1 354.05 (W) 124.5 263.0 (E)	TOWER 123.7 279.625	GND CON 121.7 289.4
------------------------------	--	-------------------------------	-------------------------------

CAUTION: When circling to Rwy 13 at night, operational VGSI required, remain on or above VGSI glidepath until threshold.

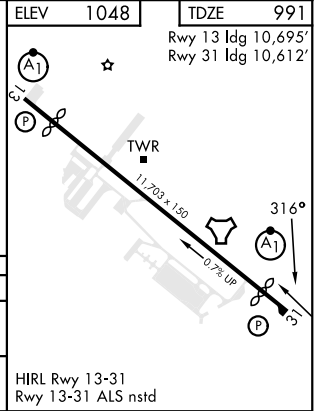
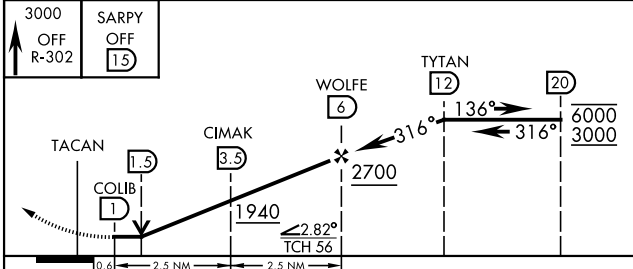


NC-2, 13 JUN 2024 to 11 JUL 2024

NC-2, 13 JUN 2024 to 11 JUL 2024



1490 EMERG SAFE ALT 100 NM 4700



CATEGORY	A	B	C	D	E
S-31*	1360/24	368 (400-½)	1360/40	368 (400-¾)	
C CIRCLING**	1500-1 452 (500-1)	1560-1 512 (600-1)	1660-1¾ 612 (700-1¾)	1940-3	892 (900-3)

HIRL Rwy 13-31
 Rwy 13-31 ALS nstd

TACAN Y RWY 31