

# CAMP SPRINGS ONE DEPARTURE (CAMP1•ADW)

CAMP SPRINGS, MARYLAND

ATIS 133.675 251.05  
 CPDLC  
 GND CON  
 121.8 275.8  
 ANDREWS TOWER  
 118.4 349.0  
 POTOMAC TRACON DEP CON  
 118.95 257.2

SL-561 [USAF]

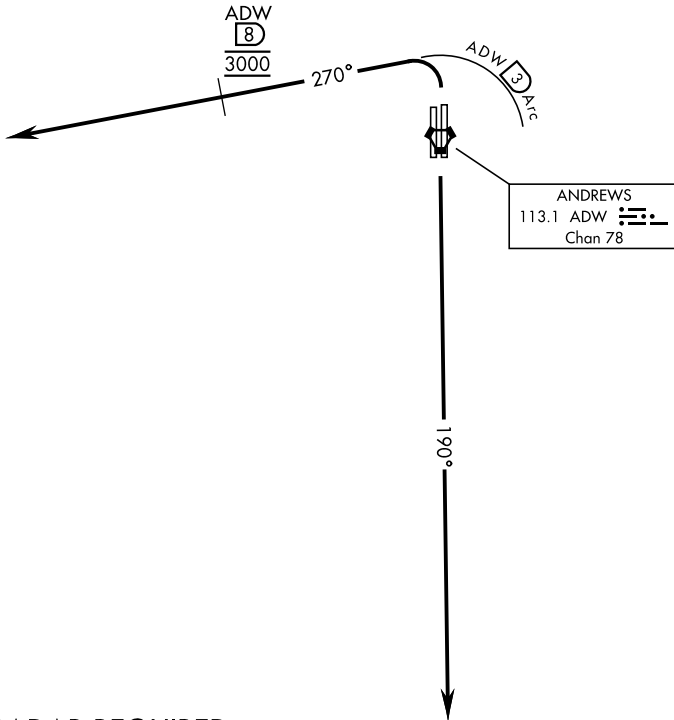
Rwy	Knots	60	120	180	240	300	360
1L/R	V/V(fpm)	380	760	1140	1520	1900	2280

ATC Climb Rate to 3000

If unable to make published climb gradient  
advise ATC prior to departure.

1149  
A

## RADAR VECTORS REQUIRED WITHIN 10 NM FROM DEPARTURE



### RADAR REQUIRED



#### DEPARTURE ROUTE DESCRIPTION

TAKE-OFF RWY 1L/1R: Turn left climb on heading 270° within 3 DME of ADW VORTAC, cross ADW 8 DME at 3000. Expect radar vectors.

TAKE-OFF RWY 19R/19L: Climb on heading 190° to 3000. Expect radar vectors to the west.

# CAMP SPRINGS ONE DEPARTURE (CAMP1•ADW)

CAMP SPRINGS, MARYLAND  
JOINT BASE ANDREWS (KADW)

NE-3, 13 JUN 2024 to 11 JUL 2024

NE-3, 13 JUN 2024 to 11 JUL 2024