

CAMP SPRINGS, MARYLAND

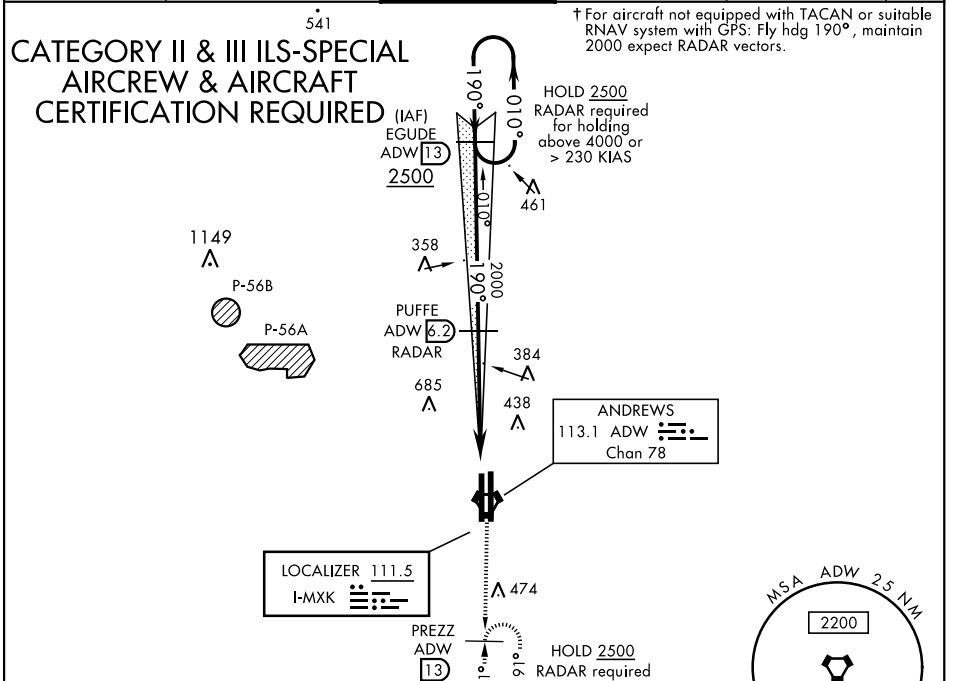
ILS RWY 19R (CAT II & III)

JOINT BASE ANDREWS (KADW)

LOC I-MXK 111.5	APCH CRS 190°	Rwy ldg TDZE Arprt Elev 9318 274 280	AL-561 [USAF]
---------------------------	-------------------------	--	---------------

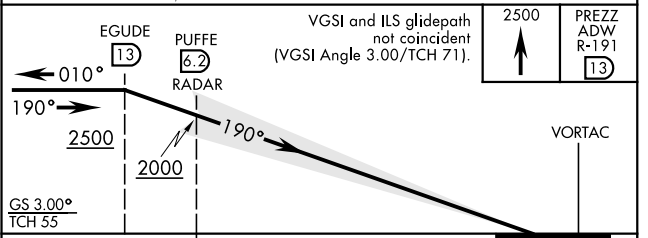
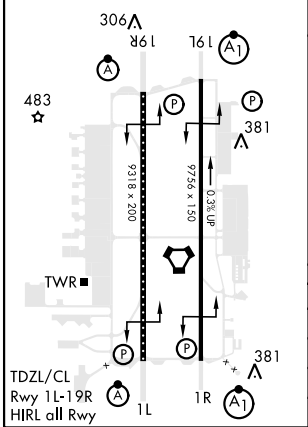
RADAR or DME required.	ALSIF-2 	† MISSED APPROACH: Climbing to 2500, intercept ADW VORTAC R-191 to PREZZ and hold.
------------------------	-------------	--

ATIS 133.675 251.05	POTOMAC APP CON 128.0 335.5	TOWER 118.4 349.0	GND CON 121.8 275.8	CLNC DEL 127.55 285.475	CPDLC
-------------------------------	---------------------------------------	-----------------------------	-------------------------------	-----------------------------------	-------



EMERG SAFE ALT 100 NM 6200

ELEV 280	TDZE 274
----------	----------



CATEGORY	A	B	C	D	E
S-ILS 19R	CAT II	RA 99/12	100	DA 374	
S-ILS 19R		CAT IIIa	RVR 07		
S-ILS 19R		CAT IIIb	RVR 06		
S-ILS 19R		CAT IIIc	NA		

CAMP SPRINGS, MARYLAND

38° 49' N-76° 52' W

JOINT BASE ANDREWS (KADW)

Orig 06OCT22

ILS RWY 19R (CAT II & III)

NE-3, 13 JUN 2024 to 11 JUL 2024

NE-3, 13 JUN 2024 to 11 JUL 2024