

CAMP SPRINGS, MARYLAND

ILS or LOC RWY 19L

LOC I-GQZ 110.5	APCH CRS 190°	Rwy ldg TDZE Arprt Elev 9756 279 280
---------------------------	-------------------------	---

AL-561 (USAF)

JOINT BASE ANDREWS (KADW)

RADAR or DME required at FAF.

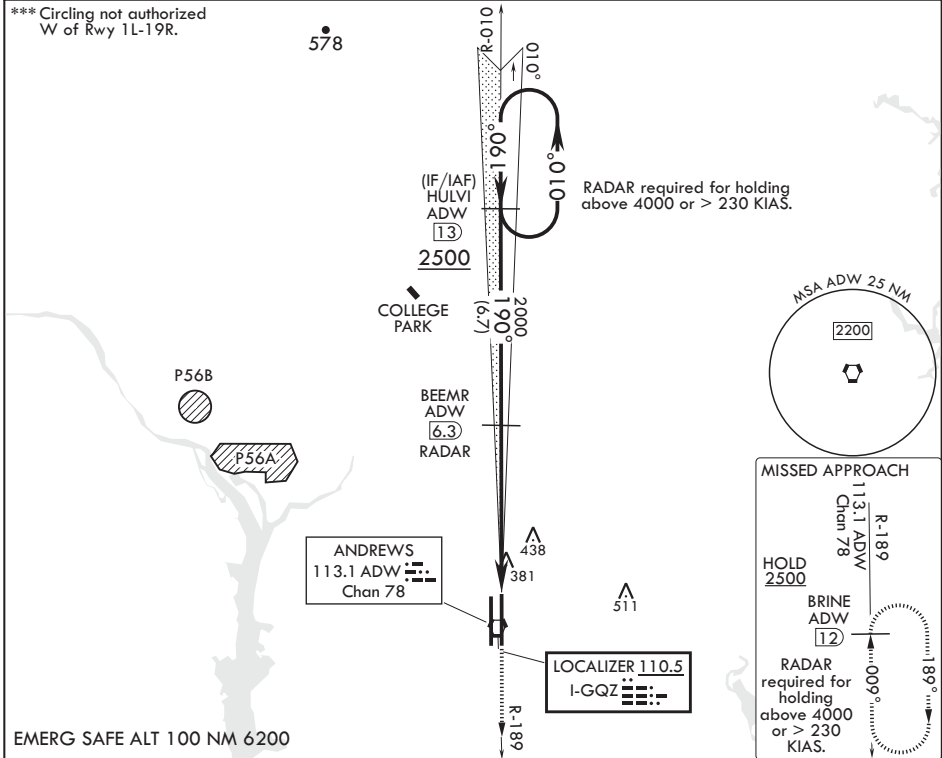
ALSF-1

MISSED APPROACH: Climb to 2500 via ADW R-189 to BRINE/ADW 12 DME and hold.

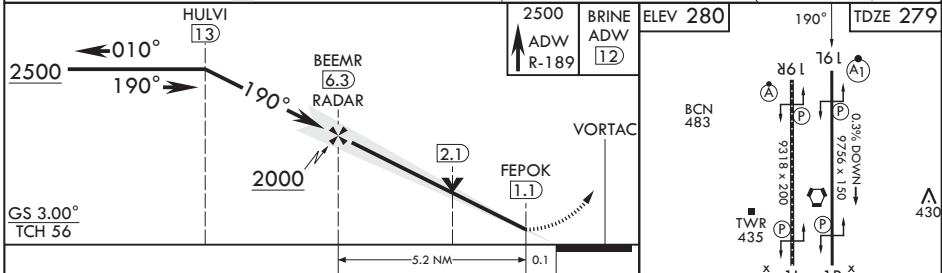
▼ * When ALS inop, increase RVR to 40, vis to 3/4.
 ** When ALS inop, increase CAT AB RVR to 55, vis to 1 mile;
 CAT CDE RVR to 60, vis to 1 1/8 mile.

ATIS 133.675 251.05	POTOMAC APP CON 128.0 335.5	TOWER 118.4 349.0	GND CON 121.8 275.8	CLNC DEL 127.55 285.475	CPDLC
-------------------------------	---------------------------------------	-----------------------------	-------------------------------	-----------------------------------	-------

*** Circling not authorized W of Rwy 1L-19R.



EMERG SAFE ALT 100 NM 6200



CATEGORY	A	B	C	D	E
S-ILS 19L*	479/24		200	(200-½)	
S-LOC 19L**	680/24	401 (400-½)	680/40	401	(400-¾)
☐ CIRCLING***	780-1	500 (500-1)	780-1½ 500 (500-1½)	840-2	560 (600-2)

HIREL all Rwys TDZL/CL Rwys 1L, 19R					
FAF to MAP 5.2 NM					
Knots	60	90	120	150	180
Min:Sec	5:12	3:28	2:36	2:05	1:44

CAMP SPRINGS, MARYLAND

38°49'N - 76°52'W

JOINT BASE ANDREWS (KADW)

Amdt 1 18MAY23

ILS or LOC RWY 19L

NE-3, 13 JUN 2024 to 11 JUL 2024

NE-3, 13 JUN 2024 to 11 JUL 2024