

# LINCN ONE DEPARTURE (RNAV) (LINCN1•LINCN)

JOINT BASE ANDREWS (KADW)  
CAMP SPRINGS, MARYLAND

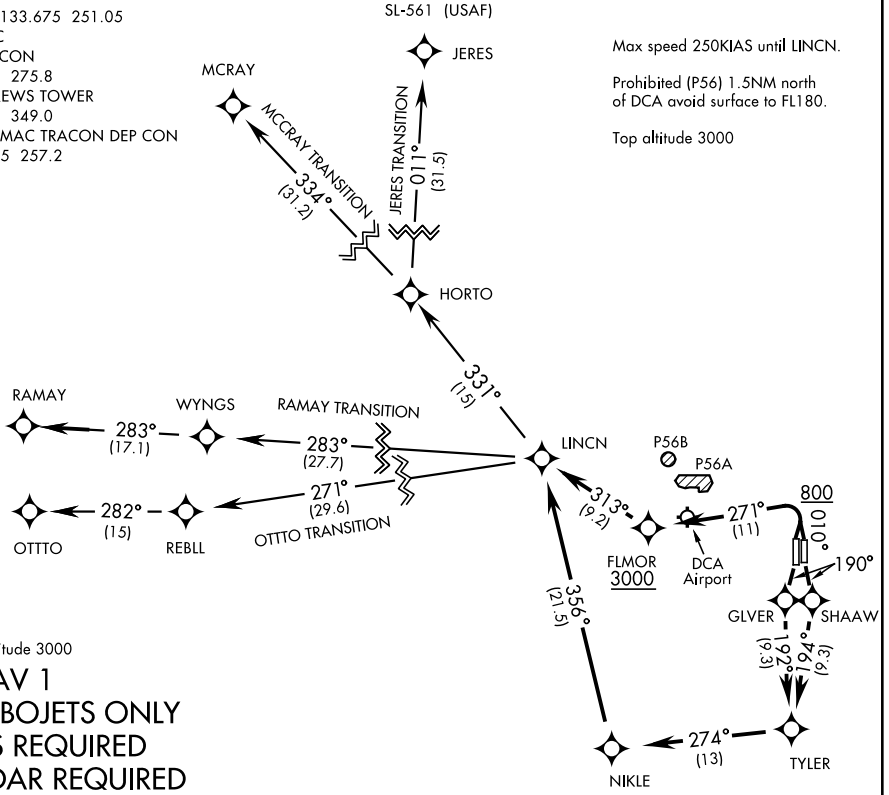
ATIS 133.675 251.05  
CPDLC  
GND CON  
121.8 275.8  
ANDREWS TOWER  
118.4 349.0  
POTOMAC TRACON DEP CON  
118.95 257.2

SL-561 (USAF)

Max speed 250KIAS until LINCN.

Prohibited (P56) 1.5NM north  
of DCA avoid surface to FL180.

Top altitude 3000



Top altitude 3000

**RNAV 1**  
**TURBOJET ONLY**  
**GPS REQUIRED**  
**RADAR REQUIRED**

NE-3, 13 JUN 2024 to 11 JUL 2024

NE-3, 13 JUN 2024 to 11 JUL 2024

## DEPARTURE ROUTE DESCRIPTION

RWY 01L/R: Climb heading 010° to 800, then climbing left turn to 3000 direct FLMOR. Then via depicted route to LINCN, thence...

RWY 19L: Climb heading 190° direct SHAAW then via depicted route to LINCN, thence...

RWY 19R: Climb heading 190° direct GLVER then via depicted route to LINCN, thence...

...on assigned transition. Maintain 3000, expect further clearance to filed alt within ten (10) minutes after departure.

JERES TRANSITION (LINCN1.JERES)

MCCRAY TRANSITION (LINCN1.MCCRAY)

OTTO TRANSITION (LINCN1.OTTO)

RAMAY TRANSITION (LINCN1.RAMAY)

# LINCN ONE DEPARTURE (RNAV) (LINCN1•LINCN)

Amdt 1 17AUG17

CAMP SPRINGS, MARYLAND  
JOINT BASE ANDREWS (KADW)