

CAMP SPRINGS, MARYLAND

RNAV (RNP) Y RWY 01L

APCH CRS	Rwy Idg	9318
010°	TDZE	261
	Arprt Elev	280

AL-561 (USAF)

JOINT BASE ANDREWS (KADW)

RNP AR APCH. From SPISY, EDDGY; RF.

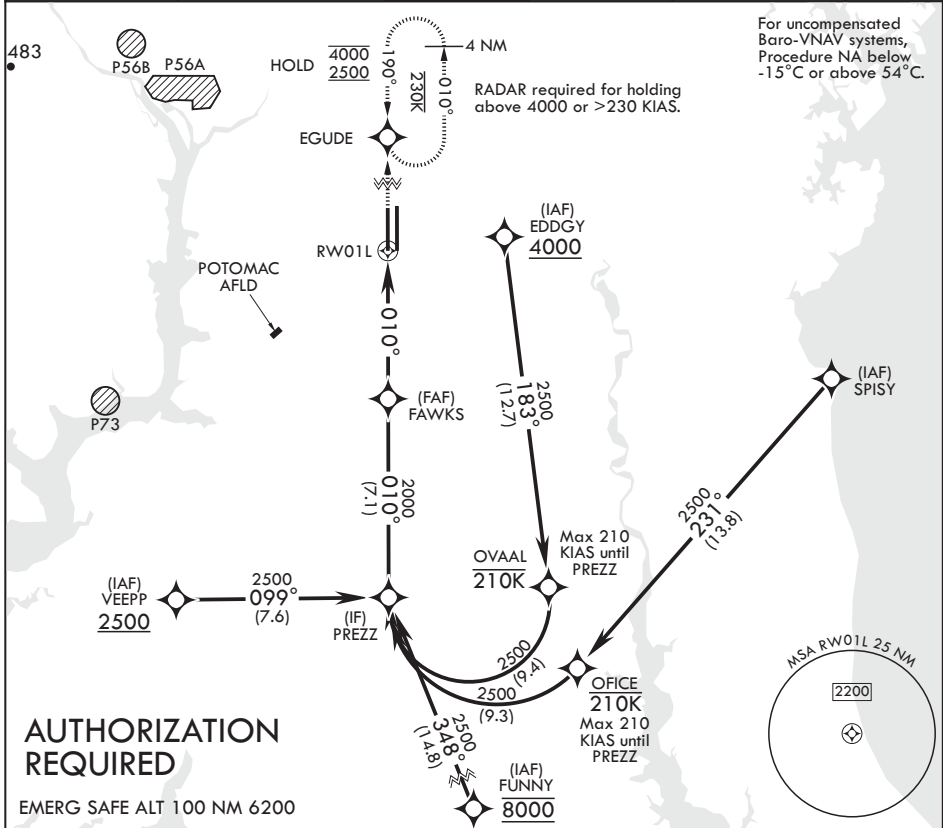
ALSF-2

MISSED APPROACH: Climb to 2500 on track 010° to EGUDE and hold.

▲ * When ALS inop, increase RVR to 55, vis to 1 mile.
 ** When ALS inop, increase vis to 1 3/8 miles.

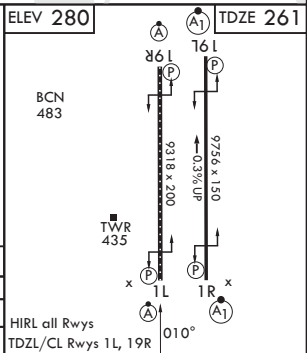
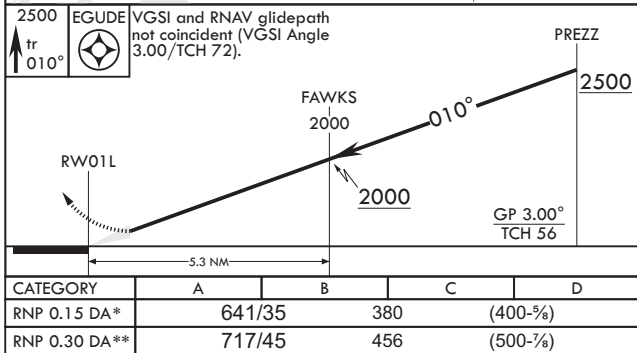


ATIS	POTOMAC APP CON	TOWER	GND CON	CLNC DEL	CPDLC
133.675 251.05	128.0 335.5	118.4 349.0	121.8 275.8	127.55 285.475	



NE-3, 13 JUN 2024 to 11 JUL 2024

NE-3, 13 JUN 2024 to 11 JUL 2024



CATEGORY	A	B	C	D
RNP 0.15 DA*	641/35	380	(400-5%)	
RNP 0.30 DA**	717/45	456	(500-7%)	

HIRL all Rwys TDZL/CL Rwys 1L, 19R

CAMP SPRINGS, MARYLAND

38°49'N - 76°52'W

JOINT BASE ANDREWS (KADW)

Amdt 2 18MAY23 TERPS

RNAV (RNP) Y RWY 01L