

CAMP SPRINGS, MARYLAND

TACAN RWY 1R

VORTAC ADW 113.1 Chan 78	APCH CRS 003°	Rwy ldg TDZE Arprt Elev	9756 265 280
--------------------------------	------------------	----------------------------	--------------------

AL-561 (USAF)

JOINT BASE ANDREWS (KADW)

ATC RADAR required

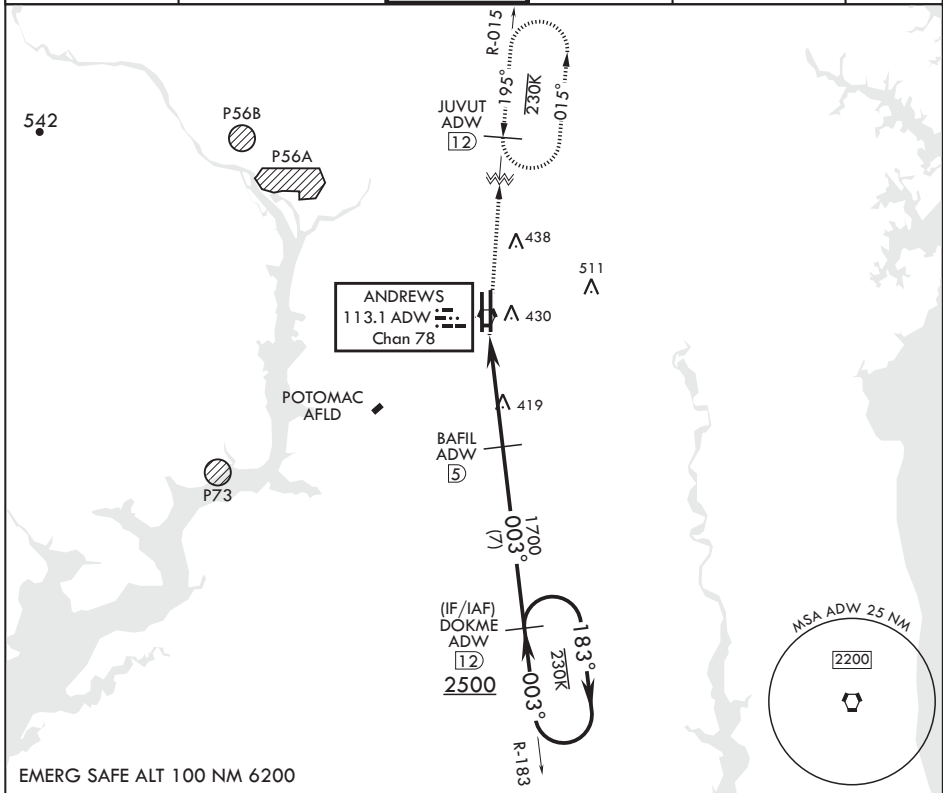
* When ALS inop, increase CAT AB RVR to 55, vis to 1 mile, CAT CDE vis to 1 3/8 miles.
** Circling not authorized W of Rwy 1L-19R.

ALSF-1

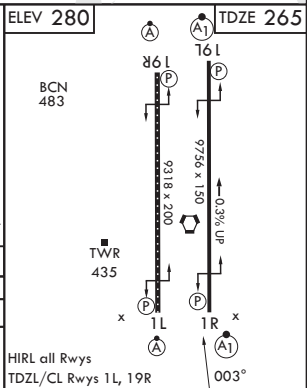
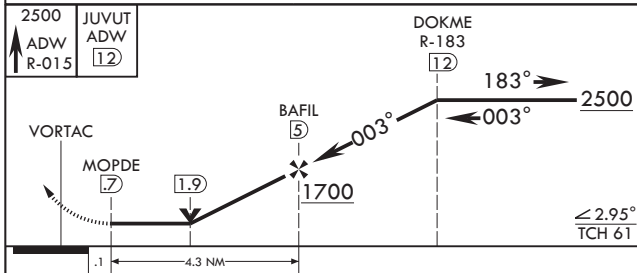


MISSED APPROACH: Climb to 2500 via ADW VORTAC R-015 to JUVUT and hold.

ATIS 133.675 251.05	POTOMAC APP CON 128.0 335.5	TOWER 118.4 349.0	GND CON 121.8 275.8	CLNC DEL 127.55 285.475	CPDLC
------------------------	--------------------------------	----------------------	------------------------	----------------------------	-------



EMERG SAFE ALT 100 NM 6200



CATEGORY	A	B	C	D	E
S-1R*	720/24 455 (500-½)	720/45 455 (500-¾)	780-1½ 501 (600-1½)	840-2 561 (600-2)	
CIRCLING**	780-1 501 (600-1)	780-1½ 501 (600-1½)	840-2 561 (600-2)		

CAMP SPRINGS, MARYLAND

38°49'N - 76°52'W

JOINT BASE ANDREWS (KADW)

Amdt 3 18MAY23

TACAN RWY 1R

NE-3, 13 JUN 2024 to 11 JUL 2024

NE-3, 13 JUN 2024 to 11 JUL 2024